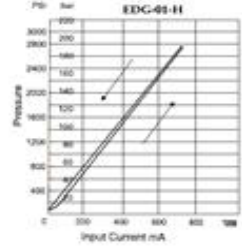
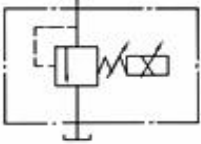


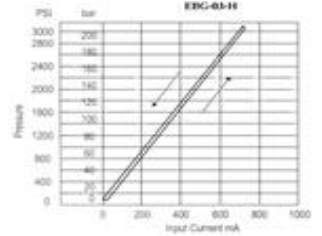
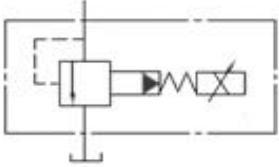
(CETOP 3) NG6 ORANSAL (PROPORTIONAL) BASINÇ EMNİYET VALFİ (Pilot Valf)

Tipi	Kontrol Pozisyon	Max. Basınç Bar	Max. Debi Lt/dk (Usgpm)	Bağlantı Norm	Fiyat USD.-
EDG-01-H-20	P (Basınç) Kontrol	250	2 (.53)	NG 6	
Coil P for EFBG 03/06/10	P (Basınç) Bobin 10 Ohm			NG 6	
Coil Q for EFBG 03/06/10	Q (Debi) Bobin 40 Ohm	5 (72.5) (A-B)	*	NG16/NG25	



(CETOP 7-8-10) NG16/NG25/NG32 ORANSAL (PROPORTIONAL) BASINÇ EMNİYET VALFLERİ

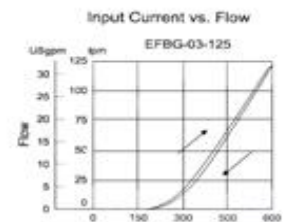
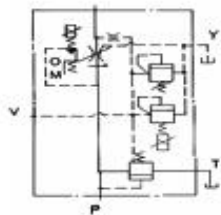
Tipi	Kontrol Pozisyon	Max. Basınç Bar	Max. Debi Lt/dk	Bağlantı Norm	Fiyat USD.-
CETOP 7-8-10					
EBG-03-H-20	P (Basınç) Kontrol	206	100	NG 16	
EBG-06-H-20	P (Basınç) Kontrol	206	200	NG 25	
EBG-10-H-20	P (Basınç) Kontrol	206	400	NG 32	



NG16/25/32 ORANSAL (PROPORTIONAL) PQ VALFLER 40-10 Ohm

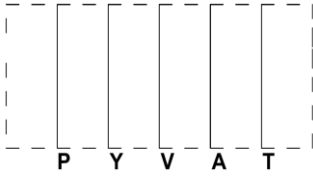


Tipi	Kontrol Pozisyon	Max. Basınç Bar	Max. Debi Lt/dk	Bağlantı Norm	Fiyat USD.-
EFBG-03-H-125	P-Q	210	125	NG 16	
EFBG-03-H-160	P-Q	210	160	NG 16	
EFBG-06-H-250	P-Q	210	250	NG 25	
EFBG-06-H-350	P-Q	210	350	NG 25	
EFBG-10-H-500	P-Q	210	500	NG 32	

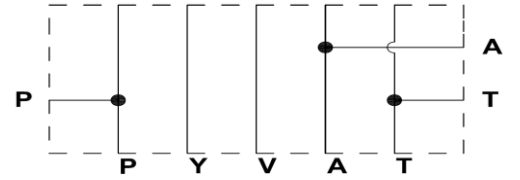


P-Q Alt Pleytler

Cinsi	Ölçü	Max. Debi	Max. Basınç	Fiyat USD.-
		Lt/Dk	bar	
EFBGM -03X-11-1	Port P,A,T =3/4" - Rear	125	210	
EFBGM -03Y-11-1	Port P,A,T =1" - Rear	160	210	
EFBGM -03X-11-2	Port P,A,T =3/4" - Rear and Side	125	210	
EFBGM -03Y-11-2	Port P,A,T =1" - Rear and Side	160	210	
EFBGM -06X-11-1	Port P,A,T =1" - Rear	250	210	
EFBGM -06Y-11-1	Port P,A,T =1 1/4" - Rear	350	210	
EFBGM -06X-11-2	Port P,A,T =1" - Rear and Side	250	210	
EFBGM -06Y-11-2	Port P,A,T =1 1/4" - Rear and Side	350	210	



EFBGM -03X-11-1 - (Rear)



EFBGM -03X-11-2 - (Rear and Side)

PQ Elektronik kart'lar

Model	Kontrol	Max.Akım	Pilot ayar	Max.Güç	Fiyat USD.-
Cetop7-8	PQ	Çıkış Aralığı	Akım Aralığı	Gereksinim	
HNC 1085 E.Kart	Basınç Kont.	0-850 mA	0-150 mA	15 VA	
HNC 4075 E.Kart	Debi Kont.	0-750 mA	0-150 mA	40 VA	

