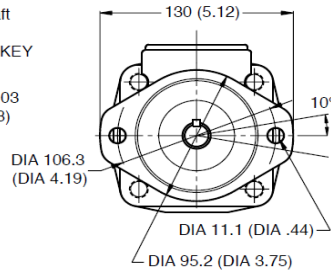
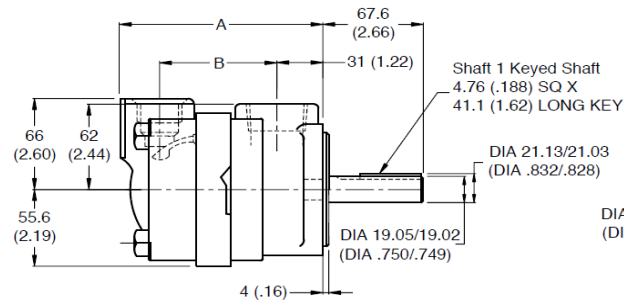




V10 & V20 Serisi (Endüstri Tip) PALETLİ POMPA

Model	Debi 1200/r/min & 7 bar (100 psi) Usgpm (Gallon)	Deplasman Geometric Displacement cm ³ /r (in ³ /r)	Debi 1500 r/min & 7 bar (100 psi) L/min (USgpm)	Max.Basınç bar (psi)	Max.Hız rpm	Min.Hız rpm	Fiyat USD.-
V10	1	3.3 (0.20)	4.70 (1.25)	172 (2500)	4800	650	
	2	6.6 (0.40)	9.40 (2.50)	172 (2500)	4500	650	
	3	9.8 (0.60)	14.20 (3.75)	172 (2500)	4000	650	
	4	13.1 (0.80)	18.90 (5.00)	172 (2500)	3400	650	
	5	16.4 (1.00)	23.60 (6.25)	172 (2500)	3200	650	
	6	19.5 (1.19)	28.40 (7.50)	152 (2200)	3000	650	
	7	22.8 (1.39)	33.10 (8.75)	138 (2000)	2800	650	
V20	6	19.5 (1.19)	28.39 (7.50)	172 (2500)	3400	650	
	7	22.8 (1.39)	33.11 (8.75)	172 (2500)	3000	650	
	8	26.5 (1.62)	37.85 (10.00)	172 (2500)	2800	650	
	9	29.7 (1.81)	42.57 (11.25)	172 (2500)	2800	650	
	11	36.4 (2.22)	52.04 (13.75)	172 (2500)	2500	650	
	12	39.0 (2.38)	56.77 (15.00)	152 (2200)	2400	650	
	13	42.4 (2.59)	61.50 (16.25)	152 (2200)	2400	650	



V10 & V20 Orta kad. kartriç 195.-USD



Yedek mil'ler	Mil Tipi	Fiyat USD.-
---------------	----------	-------------

V20 # 1 Keyed Shaft 1	Kamalı mil	
20V/20VQ # 1 Keyed Shaft 1	Kamalı mil	
25V/25VQ # 1 Keyed Shaft 1	Kamalı mil	
25V/VQ # 11 Splined Shaft 11	Frezeli mil	

35V/VQ # 1 Keyed Shaft 1	Kamalı mil	
35V/VQ # 11 Splined Shaft 11	Frezeli mil	
35V/VQ # 86 Keyed Shaft 86	Kamalı uzun mil	

45V/VQ #1 Keyed Shaft 1	Kamalı mil	
45V/VQ # 11 Splined Shaft 11	Frezeli mil	
45V/VQ # 86 Keyed Shaft 86	Kamalı uzun mil	

Yedek mil'ler	Mil Tipi	Fiyat USD.-
---------------	----------	-------------

2520V/VQ # 1 Keyed Shaft 1	Kamalı mil	
3520V/VQ # 1 Keyed Shaft 1	Kamalı mil	
3525V/VQ # 1 Keyed Shaft 1	Kamalı mil	
3525V # 86 Keyed Shaft 86	Kamalı uzun mil	

4520V # 1 Keyed Shaft 1	Kamalı mil	
4525V # 1 Keyed Shaft 1	Kamalı mil	
4525V # 11 Splined Shaft 11	Frezeli mil	
4535V # 1 Keyed Shaft 1	Kamalı mil	
4535V # 11 Splined Shaft 11	Frezeli mil	
4535V # 86 Keyed Shaft 86	Kamalı uzun mil	



20V,25V,35V,45V Serisi (Endüstri Tip) PALETLİ POMPA

Model	Debi 1200 rpm & 7 bar (100 psi)		Max. Hız rpm	Max. Basınç bar (psi)	Debi max.hız& basınç L/min (USgpm)	Max. Güç kW (hp)	Fiyat USD.-
	USgpm	cm3/r (in3/r)					
20V	5	18 (1.10)	1800	206 (3000)	28.4 (7.5)	11.2 (15.0)	
	8	27 (1.67)			45.4 (12.0)	17.0 (22.8)	
	11	36 (2.22)			56.8 (15.0)	22.6 (30.3)	
	12	40 (2.47)			62.1 (16.4)	25.1 (33.7)	
	14	45 (2.78)			69.6 (18.4)	28.3 (37.9)	
25V	12	39 (2.47)	1800	172 (2500)	62.1 (16.4)	22.9 (30.8)	
	14	45 (2.78)			69.6 (18.4)	25.7 (34.5)	
	17	55 (3.39)			86.3 (22.8)	29.8 (40.0)	
	21	67 (4.13)			106.0 (28.0)	34.0 (45.6)	
35V	25	81 (4.94)	1800	172 (2500)	124.9 (33.0)	45.5 (61.0)	
	30	97 (5.91)			154.4 (40.8)	54.5 (73.0)	
	35	112 (6.83)			181.7 (48.0)	61.5 (82.4)	
	38	121 (7.37)			193.8 (51.2)	65.9 (88.3)	
45V	42	138 (8.41)	1800	172 (2500)	208.2 (55.0)	75.3 (101.0)	
	50	162 (9.85)			253.6 (67.0)	87.3 (117.0)	
	60	193 (11.75)			310.4 (82.0)	103.7 (139.0)	

20VQ 25VQ 35VQ 45VQ (Mobil Tip) PALETLİ POMPA

Model	Debi 1200 rpm & 7 bar (100 psi)		Max.Hız rpm	Max.Basınç bar (psi)	Debi max.hız& basınç L/min (USgpm)	Max. Güç kW (hp)	Fiyat USD.-
	USgpm	cm3/r (in3/r)					
20VQ	5	18 (1.10)	2700	206 (3000)	41.6 (11.0)	17.9 (24.0)	
	8	27 (1.67)			64.3 (17.0)	26.1 (35.0)	
	11	36 (2.22)			87.1 (23.0)	35.4 (47.5)	
	12	39 (2.41)			96.5 (25.5)	28.3 (38.0)	
	14	45 (2.80)			113.6 (30.0)	29.1 (39.0)	
25VQ	12	40 (2.45)	2700	206 (3000)	87.1 (23.0)	41.0 (55.0)	
	14	45 (2.77)	2700		102.2 (27.0)	46.6 (62.5)	
	17	55 (3.37)	2500		117.3 (31.0)	51.8 (69.5)	
	21	67 (4.12)	2500		143.8 (38.0)	61.9 (83.0)	
35VQ	25	81 (4.98)	2500	206 (3000)	170.3 (45.0)	75.3 (101.0)	
	30	97 (5.96)	2500		208.2 (55.0)	87.7 (117.5)	
	35	112 (6.88)	2400		227.1 (60.0)	98.5 (132.0)	
	38	121 (7.42)	2400		246.0 (65.0)	104.4 (140.0)	
45VQ	42	138 (8.46)	2200	172 (2500)	251.7 (66.5)	91.4 (122.5)	
	50	162 (9.90)			299.0 (79.0)	105.2 (141.0)	
	60	193 (11.80)			363.4 (96.0)	126.8 (170.0)	

2520V, 3520V, 3525V (Endüstri Tip) TANDEM/ İKİLİ POMPA

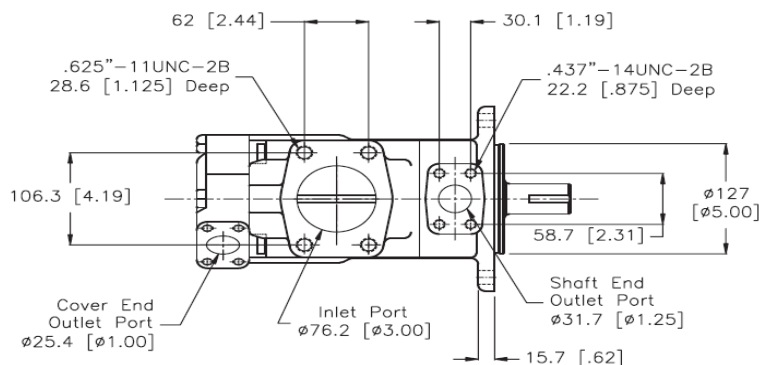
Model	Cartridge Pozisyon	Debi 1200 rpm & 7 bar (100 psi)		Max.Hız rpm	Max.Basınç bar (psi)	Max. Debi L/min (Usgpm)	Max. Güç kW (hp)	Fiyat USD.-
		USgpm	cm ³ /r (in ³ /r)					

2520V	(Ön)Shaft End	12	39 (2.47)	1800	172 (2500)	62.1 (16.4)	22.9 (30.8)
		14	45 (2.78)			69.6 (18.4)	25.7 (34.5)
		17	55 (3.39)			86.3 (22.8)	29.8 (40.0)
		21	67 (4.13)			106.0 (28.0)	34.0 (45.6)
	(Arka)Cover End	5	18 (1.10)	1800	206 (3000)	28.4 (7.5)	11.2 (15.0)
		8	27 (1.67)		206 (3000)	45.4 (12.0)	17.0 (22.8)
		11	36 (2.22)		206 (3000)	56.8 (15.0)	22.6 (30.3)
		12	40 (2.47)		158 (2300)	62.1 (16.4)	25.1 (33.7)
		14	45 (2.78)		138 (2000)	69.6 (18.4)	28.3 (37.9)

3520V	(Ön)Shaft End	25	81 (4.94)	1800	172 (2500)	124.9 (33.0)	45.5 (61.0)
		30	97 (5.91)			154.4 (40.8)	54.5 (73.0)
		35	112 (6.83)			181.7 (48.0)	61.5 (82.4)
		38	121 (7.37)			193.8 (51.2)	65.9 (88.3)
	(Arka)Cover End	5	18 (1.10)	1800	206 (3000)	28.4 (7.5)	11.2 (15.0)
		8	27 (1.67)		206 (3000)	45.4 (12.0)	17.0 (22.8)
		11	36 (2.22)		206 (3000)	56.8 (15.0)	22.6 (30.3)
		12	40 (2.47)		158 (2300)	62.1 (16.4)	25.1 (33.7)
		14	45 (2.78)		138 (2000)	69.6 (18.4)	28.3 (37.9)

3525V	(Ön)Shaft End	25	81 (4.94)	1800	172 (2500)	124.9 (33.0)	45.5 (61.0)
		30	97 (5.91)			154.4 (40.8)	54.5 (73.0)
		35	112 (6.83)			181.7 (48.0)	61.5 (82.4)
		38	121 (7.37)			193.8 (51.2)	65.9 (88.3)
	(Arka)Cover End	12	39 (2.47)	1800	172 (2500)	62.1 (16.4)	22.9 (30.8)
		14	45 (2.78)			69.6 (18.4)	25.7 (34.5)
		17	55 (3.39)			86.3 (22.8)	29.8 (40.0)
		21	67 (4.13)			106.0 (28.0)	34.0 (45.6)

3525HV/HVQ for shaft, see 35HV/HVQ



3525V

4520V, 4525V, 4535V (Endüstri Tip) TANDEM/İKİLİ POMPA

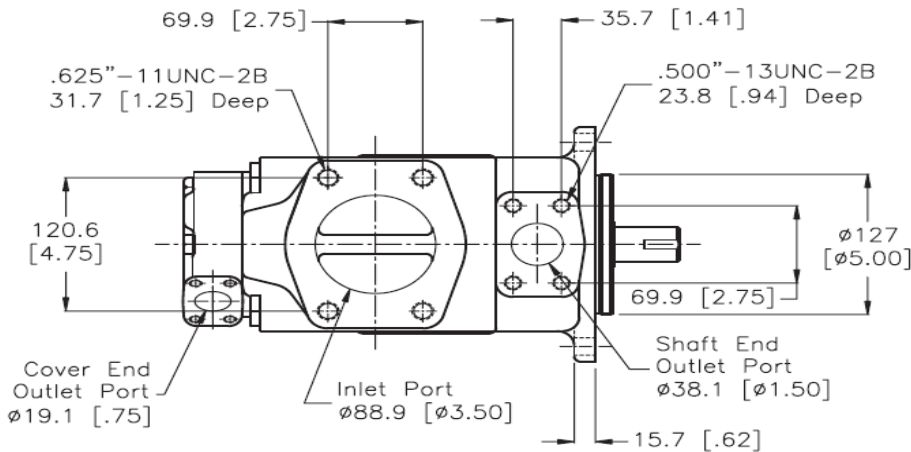
Model	Cartridge Pozisyon	Debi 1200 rpm & 7 bar (100 psi)		Max.Hız rpm	Max.Basınç bar (psi)	Max. Debi L/min (Usgpm)	Max. Güç kW (hp)	Fiyat USD.-
		USgpm	cm ³ /r (in ³ /r)					

4520V	(Ön)Shaft End	42	138 (8.41)	1800	172 (2500)	208.2 (55.0)	75.3 (101.0)	
		50	162 (9.85)			253.6 (67.0)	87.3 (117.0)	
		60	193 (11.75)			310.4 (82.0)	103.7 (139.0)	
	(Arka)Cover End	5	18 (1.10)	1800	206 (3000)	28.4 (7.5)	11.2 (15.0)	
		8	27 (1.67)			45.4 (12.0)	17.0 (22.8)	
		11	36 (2.22)			206 (3000)	56.8 (15.0)	22.6 (30.3)
		12	40 (2.47)			158 (2300)	62.1 (16.4)	25.1 (33.7)
14	45 (2.78)	138 (2000)	69.6 (18.4)	28.3 (37.9)				

4525V	(Ön)Shaft End	42	138 (8.41)	1800	172 (2500)	208.2 (55.0)	75.3 (101.0)
		50	162 (9.85)			253.6 (67.0)	87.3 (117.0)
		60	193 (11.75)			310.4 (82.0)	103.7 (139.0)
	(Arka)Cover End	12	39 (2.47)	1800	172 (2500)	62.1 (16.4)	22.9 (30.8)
		14	45 (2.78)			69.6 (18.4)	25.7 (34.5)
		17	55 (3.39)			86.3 (22.8)	29.8 (40.0)
		21	67 (4.13)			106.0 (28.0)	34.0 (45.6)

4535V	(Ön)Shaft End	42	138 (8.41)	1800	172 (2500)	208.2 (55.0)	75.3 (101.0)
		50	162 (9.85)			253.6 (67.0)	87.3 (117.0)
		60	193 (11.75)			310.4 (82.0)	103.7 (139.0)
	(Arka)Cover End	25	81 (4.94)	1800	172 (2500)	124.9 (33.0)	45.5 (61.0)
		30	97 (5.91)			154.4 (40.8)	54.5 (73.0)
		35	112 (6.83)			181.7 (48.0)	61.5 (82.4)
		38	121 (7.37)			193.8 (51.2)	65.9 (88.3)

4520HV/HVQ for shaft, see 45HV/HVQ



4520V

2520VQ, 3520VQ, 3525VQ (Mobil Tip) TANDEM/ İKİLİ POMPA

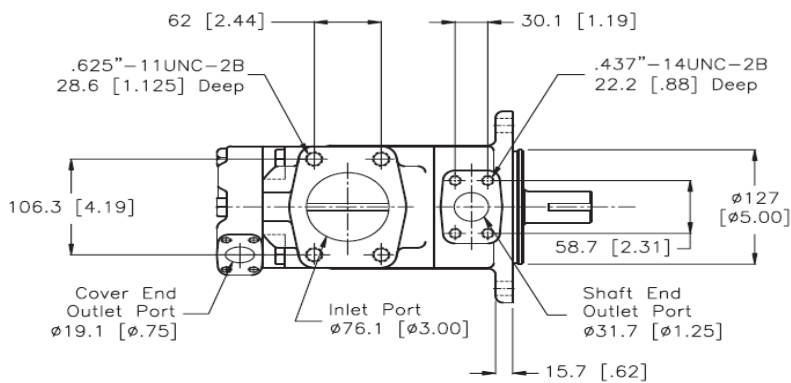
Model	Cartridge	Debi		Max.Hız	Max.Basınç	Max. Debi	Max. Güç	Fiyat USD.-
		1200 rpm & 7 bar						
	Pozisyon	(100 psi)						
		USgpm	cm ³ /r (in ³ /r)	rpm	bar (psi)	L/min (Usgpm)	kW (hp)	

2520VQ	(Ön)Shaft End	12	40 (2.45)	2700	206 (3000)	87.1 (23.0)	41.0 (55.0)
		14	45 (2.77)	2700		102.2 (27.0)	46.6 (62.5)
		17	55 (3.37)	2500		117.3 (31.0)	51.8 (69.5)
		21	67 (4.12)	2500		143.8 (38.0)	61.9 (83.0)
	(Arka)Cover End	5	18 (1.10)	2700	206 (3000)	41.6 (11.0)	17.9 (24.0)
		8	27 (1.67)		206 (3000)	64.3 (17.0)	26.1 (35.0)
		11	36 (2.22)		206 (3000)	87.1 (23.0)	35.4 (47.5)
		12	39 (2.41)		158 (2300)	96.5 (25.5)	28.3 (38.0)
		14	45 (2.80)		138 (2000)	113.6 (30.0)	29.1 (39.0)

3520VQ	(Ön)Shaft End	25	81 (4.98)	2500	206 (3000)	170.3 (45.0)	75.3 (101.0)
		30	97 (5.96)	2500		208.2 (55.0)	87.7 (117.5)
		35	112 (6.88)	2400		227.1 (60.0)	98.5 (132.0)
		38	121 (7.42)	2400		246.0 (65.0)	104.4 (140.0)
	(Arka)Cover End	5	18 (1.10)	2500	206 (3000)	37.9 (10.0)	16.4 (22.0)
		8	27 (1.67)		206 (3000)	60.6 (16.0)	24.2 (32.5)
		11	36 (2.22)		206 (3000)	79.5 (21.0)	32.8 (44.0)
		12	39 (2.41)		158 (2300)	88.9 (23.5)	26.1 (35.0)
		14	45 (2.80)		138 (2000)	104.1 (27.5)	26.9 (36.0)

3525VQ	(Ön)Shaft End	25	81 (4.98)	2500	206 (3000)	170.3 (45.0)	75.3 (101.0)
		30	97 (5.96)	2500		208.2 (55.0)	87.7 (117.5)
		35	112 (6.88)	2400		227.1 (60.0)	98.5 (132.0)
		38	121 (7.42)	2400		246.0 (65.0)	104.4 (140.0)
	(Arka)Cover End	12	40 (2.45)	2500	206 (3000)	79.5 (21.0)	38.0 (51.0)
		14	45 (2.77)		90.8 (24.0)	43.3 (58.0)	
		17	55 (3.37)		117.3 (31.0)	51.5 (69.0)	
		21	67 (4.12)		143.8 (38.0)	61.9 (83.0)	

3520HV/HVQ for shaft, see 35HV/HVQ



3520VQ

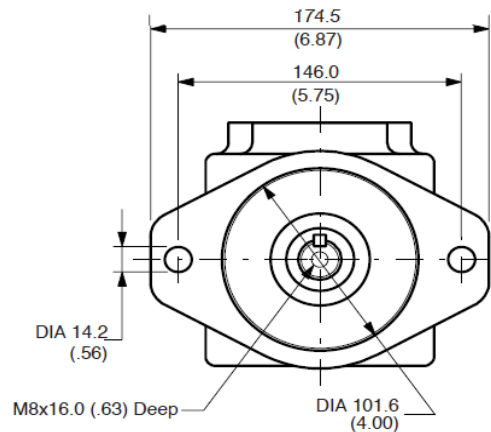
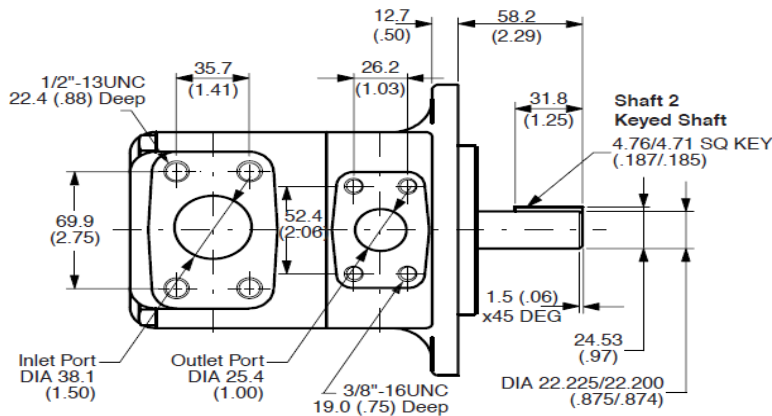
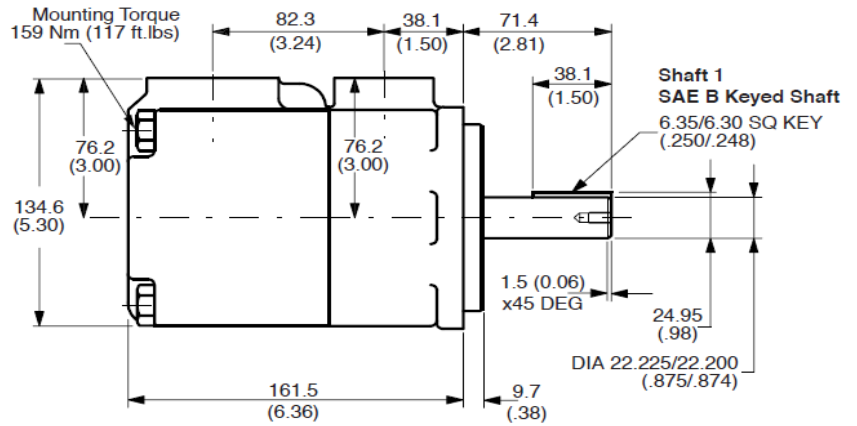
T6C PALETLİ POMPA



Tip (Galon)	Debi Geometric Displacement cm ³ /r (in ³ /r)	Max. Hız rpm	Min. Hız rpm	Max. Intermittent Basınç bar (psi)	Max. Continuous Basınç bar (psi)	Fiyat USD.-
----------------	--	--------------------	--------------------	---	---	----------------

003	10.8 (0.66)	2800	600	280 (4000)	240 (3500)	
005	17.2 (1.05)					
006	21.3 (1.30)					
008	26.4 (1.61)					
010	34.1 (2.08)					
012	37.1 (2.26)					
014	46.0 (2.81)					
017	58.3 (3.56)					
020	63.8 (3.89)					
022	70.3 (4.29)					
025	79.3 (4.84)	2500	600	210 (3000)	160 (2300)	
028	88.8 (5.42)					
031	100.0 (6.10)					

T6C	Kartrij Kit (İç Grup)	410.-USD
-----	-----------------------	----------



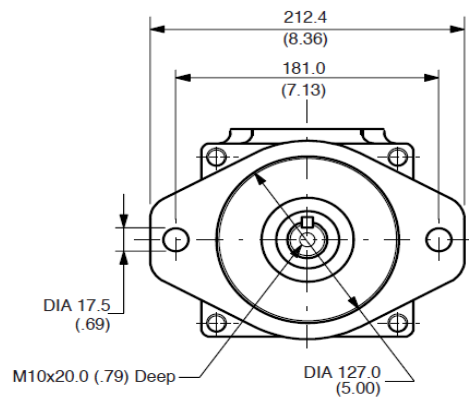
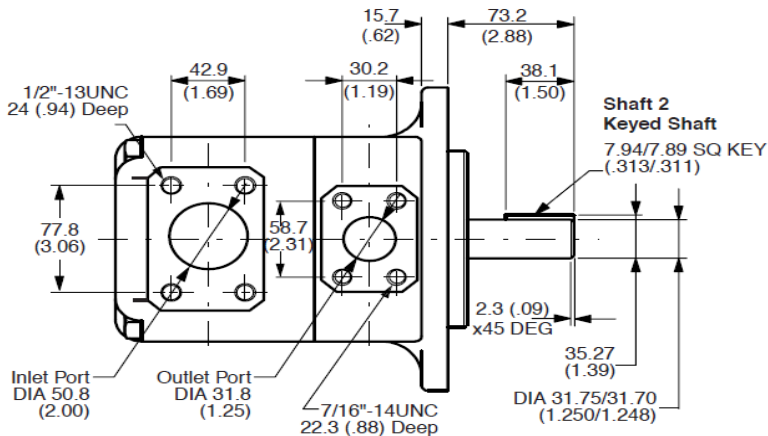
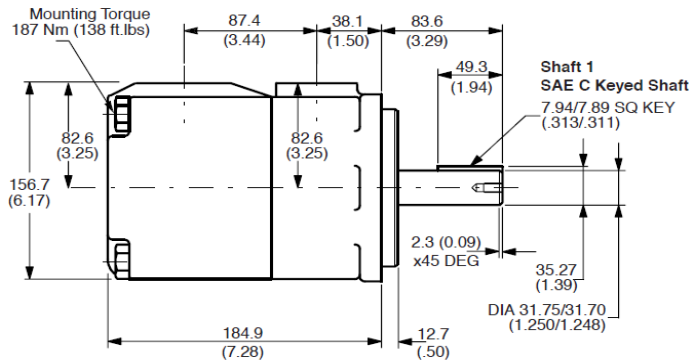


T6D PALETLİ POMPA

Tip (Galon)	Debi Geometric Displacement cm ³ /r (in ³ /r)	Max. Hız rpm	Min. Hız rpm	Max. Intermittent Basınç bar (psi)	Max. Continuous Basınç bar (psi)	Fiyat USD.-
----------------	--	--------------------	--------------------	---	---	--------------------

014	47.6 (2.90)	2500	600	240 (3500)	210 (3000)	
020	66.0 (4.03)					
024	79.5 (4.85)					
028	89.7 (5.47)					
031	98.3 (6.00)					
035	111.0 (6.77)					
038	120.3 (7.34)	2200				
042	136.0 (8.30)					
045	145.7 (8.89)					
050	158.0 (9.64)	1800		210 (3000)	160 (2320)	
061	190.5 (11.63)			120 (1700)	80 (1160)	

T6D	Kartriç Kit (İç Grup)	650.-USD
-----	-----------------------	----------





T6CC TANDEM-İKİLİ POMPA

Shaft End Pump			Cover End Pump			Max. Hız rpm	Fiyat USD.-
Size	Deplasman Geometric Displacement cm3/r (in3/r)	Max. Intermittent Basınç bar (psi)	Size	Deplasman Geometric Displacement cm3/r (in3/r)	Max. Intermittent Basınç bar (psi)		
003	10.8 (0.66)	280 (4000)	003	10.8 (0.66)	280 (4000)	2800	
005	17.2 (1.05)						
006	21.3 (1.30)						
008	26.4 (1.61)						
010	34.1 (2.08)						
012	37.1 (2.26)						
014	46.0 (2.81)						
017	58.3 (3.56)						
020	63.8 (3.89)						
022	70.3 (4.29)						
025	79.3 (4.84)						
028	88.8 (5.42)	210 (3000)	028	88.8 (5.42)	210 (3000)		
031	100.0 (6.10)		031	100.0 (6.10)			

T6CC Kartriç Kit (İç Grup) **470.-USD**

T6DC TANDEM-İKİLİ POMPA

Shaft End Pump			Cover End Pump			Max. Hız rpm	Fiyat USD.-
Size	Deplasman Geometric Displacement cm3/r (in3/r)	Max. Intermittent Basınç bar (psi)	Size	Deplasman Geometric Displacement cm3/r (in3/r)	Max. Intermittent Basınç bar (psi)		
014	47.6 (2.90)	240 (3500)	003	10.8 (0.66)	280 (4000)	2500	
020	66.0 (4.03)						
024	79.5 (4.85)						
028	89.7 (5.47)						
031	98.3 (6.00)						
035	111.0 (6.77)						
038	120.3 (7.34)						
042	136.0 (8.30)						
045	145.7 (8.89)						
050	158.0 (9.64)						
061	190.5 (11.63)	210 (3000)	022	70.3 (4.29)	210 (3000)		
		120 (1700)	025	79.3 (4.84)			
			028	88.8 (5.42)			
			031	100.0 (6.10)			

T6DC Kartriç Kit. (İç Grup) **690.-USD**



T7E PALETLİ POMPA

Tip	Debi Geometric Displacement	Max. Hız	Min Hız	Max. Intermittent	Max. Continuous	Fiyat
Galon	cm ³ /r/(in ³ /r)	rpm	rpm	Basınç Bar (psi)	Basınç Bar (psi)	USD.-
042	132.3(8.06)	2200	600	240	210	
045	142.4(8.68)					
050	158.5(9.66)					
052	164.8(10.04)					
054	171.0(10.42)					
057	183.3(11.17)					
062	196.7(11.99)					
066	213.3(13.00)					
072	227.1(13.84)					
085	268.7(16.38)					
						T7E Kartriç Kit

T7EC TANDEM / İKİLİ POMPA

Tip	Debi Geometric Displacement	Max. Hız	Min Hız	Cover End (Arka)	Max. Continuous	Fiyat
Galon	cm ³ /r/(in ³ /r)	rpm	rpm	Galon	Basınç Bar (psi)	USD.-
042	132.3(8.06)	2200	600	003	240	
045	142.4(8.68)			005		
050	158.5(9.66)			006		
052	164.8(10.04)			008		
054	171.0(10.42)			010		
057	183.3(11.17)			012		
062	196.7(11.99)			014		
066	213.3(13.00)			017		
072	227.1(13.84)			020		
085	268.7(16.38)			022		
				025	210	
				028		
				031		

T7ED TANDEM / İKİLİ POMPA

Tip	Debi Geometric Displacement	Max. Hız	Min Hız	Cover End (Arka)	Max. Continuous	Fiyat
Galon	cm ³ /r/(in ³ /r)	rpm	rpm	Galon	Basınç Bar (psi)	USD.-
042	132.3(8.06)	2200	600	014	240	
045	142.4(8.68)			020		
050	158.5(9.66)			024		
052	164.8(10.04)			028		
054	171.0(10.42)			031		
057	183.3(11.17)			035		
062	196.7(11.99)			038		
066	213.3(13.00)			042		
072	227.1(13.84)			045		
085	268.7(16.38)			050		
				061	210	



CK-20V CARTRIDGE (Endüstri Serisi Kartriç)

Tipi	Debi 1200 rpm & 7 bar(100psi) Usgpm	Deplasman Geometric Displacement cm3/r (in3/r)	Max. Hız rpm	Max. Basınç bar (psi)	Debi Max. Hız & Basınç L/min (Usgpm)	Güç Max. Hız & Basınç kW (hp)	Fiyat USD.-
20V	5	18 (1.10)	1800	206 (3000)	28.4 (7.5)	11.2 (15.0)	
20V	8	27 (1.67)	1800	206 (3000)	45.4 (12.0)	17.0 (22.8)	
20V	11	36 (2.22)	1800	206 (3000)	56.8 (15.0)	22.6 (30.3)	
20V	12	40 (2.47)	1800	158 (2300)	62.1 (16.4)	25.1 (33.7)	
20V	14	45 (2.78)	1800	138 (2000)	69.6 (18.4)	28.3 (37.9)	

CK-25V CARTRIDGE (Endüstri Serisi Kartriç)

Tipi	Debi 1200 rpm & 7 bar(100psi) Usgpm	Deplasman Geometric Displacement cm3/r (in3/r)	Max. Hız rpm	Max. Basınç bar (psi)	Debi Max. Hız & Basınç L/min (Usgpm)	Güç Max. Hız & Basınç kW (hp)	Fiyat USD.-
25V	12	39 (2.47)	1800	172 (2500)	62.1 (16.4)	22.9 (30.8)	
25V	14	45 (2.78)	1800	172 (2500)	69.6 (18.4)	25.7 (34.5)	
25V	17	55 (3.39)	1800	172 (2500)	86.3 (22.8)	29.8 (40.0)	
25V	21	67 (4.13)	1800	172 (2500)	106.0 (28.0)	34.0 (45.6)	

CK-35V CARTRIDGE (Endüstri Serisi Kartriç)

Tipi	Debi 1200 rpm & 7 bar(100psi) Usgpm	Deplasman Geometric Displacement cm3/r (in3/r)	Max. Hız rpm	Max. Basınç bar (psi)	Debi Max. Hız & Basınç L/min (Usgpm)	Güç Max. Hız & Basınç kW (hp)	Fiyat USD.-
35V	25	81 (4.94)	1800	172 (2500)	124.9 (33.0)	45.5 (61.0)	
35V	30	97 (5.91)	1800	172 (2500)	154.4 (40.8)	54.5 (73.0)	
35V	35	112 (6.83)	1800	172 (2500)	181.7 (48.0)	61.5 (82.4)	
35V	38	121 (7.37)	1800	172 (2500)	193.8 (51.2)	65.9 (88.3)	

CK-45V CARTRIDGE (Endüstri Serisi Kartriç)

Tipi	Debi 1200 rpm & 7 bar(100psi) Usgpm	Deplasman Geometric Displacement cm3/r (in3/r)	Max. Hız rpm	Max. Basınç bar (psi)	Debi Max. Hız & Basınç L/min (Usgpm)	Güç Max. Hız & Basınç kW (hp)	Fiyat USD.-
45V	42	138 (8.41)	1800	172 (2500)	208.2 (55.0)	75.3 (101.0)	
45V	50	162 (9.85)	1800	172 (2500)	253.6 (67.0)	87.3 (117.0)	
45V	60	193 (11.75)	1800	172 (2500)	310.4 (82.0)	103.7 (139.0)	



CK-20VQ CARTRIDGE (Mobil Serisi Kartriç)

Tipi	Debi 1200 rpm & 7 bar (100psi) Usgpm	Deplasman Geometric Displacement cm ³ /r (in ³ /r)	Max. Hız rpm	Max. Basınç bar (psi)	Debi Max. Hız & Basınç L/min (Usgpm)	Güç Max. Hız & Basınç kW (hp)	Fiyat USD.-
20VQ	5	18 (1.10)	2700	206 (3000)	41.6 (11.0)	17.9 (24.0)	
20VQ	8	27 (1.67)	2700	206 (3000)	64.3 (17.0)	26.1 (35.0)	
20VQ	11	36 (2.22)	2700	206 (3000)	87.1 (23.0)	35.4 (47.5)	
20VQ	12	39 (2.41)	2700	158 (2300)	96.5 (25.5)	28.3 (38.0)	
20VQ	14	45 (2.80)	2700	138 (2000)	113.6 (30.0)	29.1 (39.0)	

CK-25VQ CARTRIDGE (Mobil Serisi Kartriç)

Tipi	Debi 1200 rpm & 7 bar(100psi) Usgpm	Deplasman Geometric Displacement cm ³ /r (in ³ /r)	Max. Hız rpm	Max. Basınç bar (psi)	Debi Max. Hız & Basınç L/min (Usgpm)	Güç Max. Hız & Basınç kW (hp)	Fiyat USD.-
25VQ	12	40 (2.45)	2700	206 (3000)	87.1 (23.0)	41.0 (55.0)	
25VQ	14	45 (2.77)	2700	206 (3000)	102.2 (27.0)	46.6 (62.5)	
25VQ	17	55 (3.37)	2500	206 (3000)	117.3 (31.0)	51.8 (69.5)	
25VQ	21	67 (4.12)	2500	206 (3000)	143.8 (38.0)	61.9 (83.0)	

CK-35VQ CARTRIDGE (Mobil Serisi Kartriç)

Tipi	Debi 1200 rpm & 7 bar(100psi) Usgpm	Deplasman Geometric Displacement cm ³ /r (in ³ /r)	Max. Hız rpm	Max. Basınç bar (psi)	Debi Max. Hız & Basınç L/min (Usgpm)	Güç Max. Hız & Basınç kW (hp)	Fiyat USD.-
35VQ	25	81 (4.98)	2500	206 (3000)	170.3 (45.0)	75.3 (101.0)	
35VQ	30	97 (5.96)	2500	206 (3000)	208.2 (55.0)	87.7 (117.5)	
35VQ	35	112 (6.88)	2400	206 (3000)	227.1 (60.0)	98.5 (132.0)	
35VQ	38	121 (7.42)	2400	206 (3000)	246.0 (65.0)	104.4 (140.0)	

CK-45VQ CARTRIDGE (Mobil Serisi Kartiç)

Tipi	Debi 1200 rpm & 7 bar(100psi) Usgpm	Deplasman Geometric Displacement cm ³ /r (in ³ /r)	Max. Hız rpm	Max. Basınç bar (psi)	Debi Max. Hız & Basınç L/min (Usgpm)	Güç Max. Hız & Basınç kW (hp)	Fiyat USD.-
45VQ	42	138 (8.46)	2200	172 (2500)	251.7 (66.5)	91.4 (122.5)	
45VQ	50	162 (9.90)	2200	172 (2500)	299.0 (79.0)	105.2 (141.0)	
45VQ	60	193 (11.80)	2200	172 (2500)	363.4 (96.0)	126.8 (170.0)	



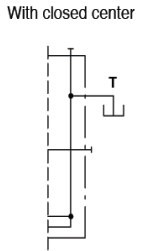
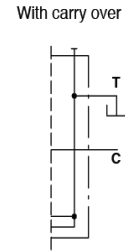
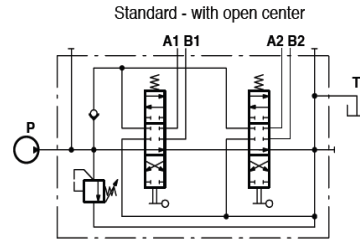
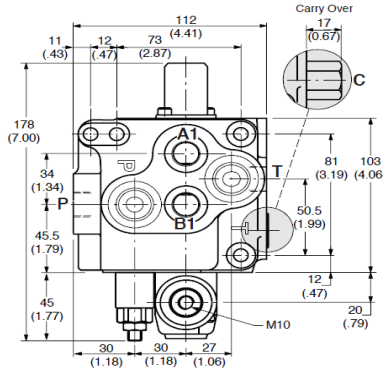
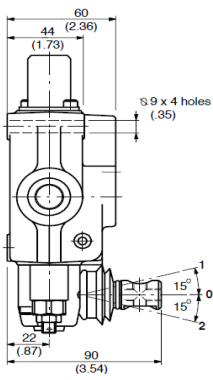
		Fiyat USD.-
*20V/VQ	Tamir Takımı Komple Set	
*25V/VQ	Tamir Takımı Komple Set	
*35V/VQ	Tamir Takımı Komple Set	
*45V/VQ	Tamir Takımı Komple Set	

MONOBLOK KUMANDA KOLLARI

Tipi	Diş Ölçüsü	Debi lt/dk.	Basınç Bar	Max.Dönüş Bar	Fiyat USD.-
MCD 20/50	Ölçüsü				

MCD 20/1	3/8"	45	315	25	
MCD 20/2	3/8"	45	315	25	
MCD 20/3	3/8"	45	315	25	
MCD 50/1	1/2"	80	315	25	
MCD 50/2	1/2"	80	315	25	
MCD 50/3	1/2"	80	315	25	

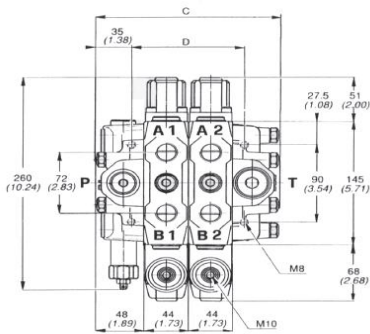
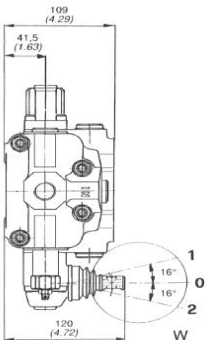
MCD20/1



DİLİMLİ KUMANDA KOLLARI

Tipi	Diş Ölçüsü	Debi Lt/dk	Basınç Bar	Max. Dönüş Bar	Fiyat USD.-
MCD	Ölçüsü				

MCD 10/1	1/2"	80	315	25	
MCD 10/2	1/2"	80	315	25	
MCD 10/3	1/2"	80	315	25	
MCD 10/4	1/2"	80	315	25	
MCD 10/5	1/2"	80	315	25	
MCD 10/6	1/2"	80	315	25	
MCD 10/7	1/2"	80	315	25	
MCD 10/8	1/2"	80	315	25	
MCD 10/9	1/2"	80	315	25	
MCD 10/10	1/2"	80	315	25	



Specification

Nominal Flow	80 L/min (21 USgpm)
Max. Pressure	210 bar (3000 psi)
Port A-B	BSP 1/2", SAE8, BSP 3/4"
Port P	BSP 1/2", SAE10, BSP 3/4"
Port T	BSP 3/4", SAE10, BSP 3/4"

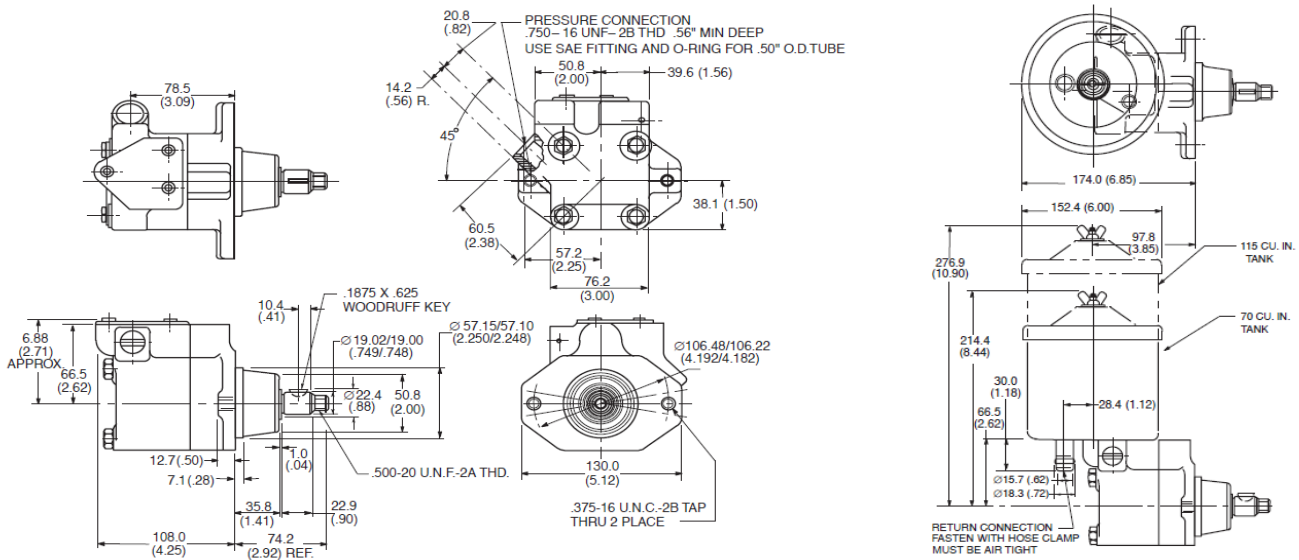




Hidrolik Direksiyon Paletli Pompa (Power Steering Vane Pump)

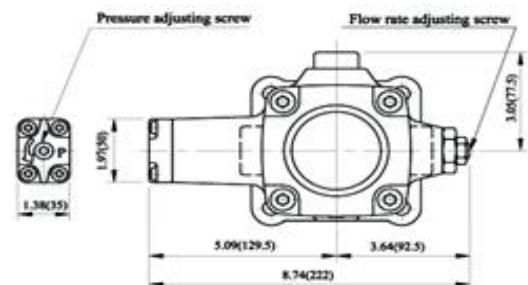
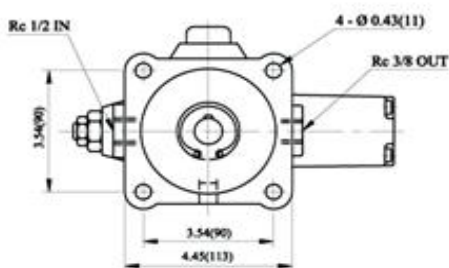
Model	Ring Size Delivery	Geometric Displacement	Maximum Speed			
Series	at 1200 r/min & 7 bar (100 psi) Usgpm	cm ³ /r (in ³ /r)	at 7 bar (100 psi) rpm	at 100 bar (1500 psi) rpm	at 140 bar (2000 psi) rpm	Fiyat USD.-

Model	Ring Size Delivery	Geometric Displacement	Maximum Speed at 7 bar	Maximum Speed at 100 bar	Maximum Speed at 140 bar	
VTM42	1	3,4 (0,21)	7000	5000	4250	
	1,50	5,0 (0,31)	7000	4500	4000	
	2	6,2 (0,38)	7000	4200	3800	
	4	12,9 (0,79)	7000	2800	2800	
	5	15,7 (0,96)	6000	2600	2300	
	6	19,3 (1,18)	5000	2500	2000	



Değişken hacimli paletli pompa (Variable Volume Vane Pump)

VHR-1B-1A5	Capacity cm ³ /rev.	No-load disc.Rate lt/min.				Press.Adj.R.	Fiyat USD.-
	16,7	1000min1	1200min1	1500min1	1800min1		
	16,7	20	25	30	9-14 Mpa	360	



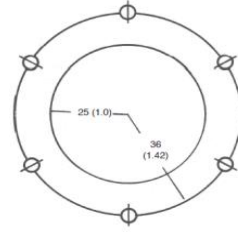
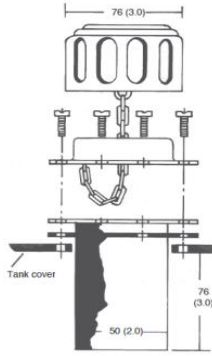


P-02 Basınç Şalteri

Model	Valve Size	Pressure Range bar (psi)	Electrical Rating	Kullanım alanları	Fiyat USD.-
P-02 (L)	1/4" (Low pressure)	1-70 bar (14-1000 psi)	DC 24 V AC 110-250 V/3A	Hydraulic Oil Air, Water	
P-02	1/4" (High pressure)	10-400 bar (140-5800 psi)	DC 24 V AC 110-250 V/3A	Hydraulic Oil	

Depo Kapağı (Zincir bağlantılı)

Model	HB-55-72	Fiyat USD.-



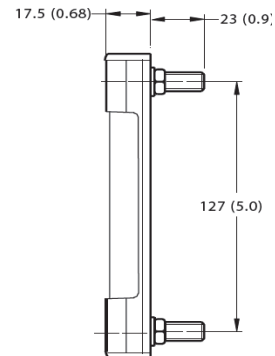
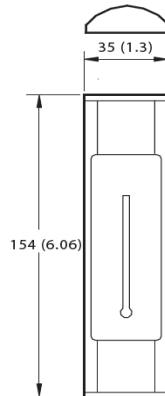
Weight: 0.25 kg (0.55 lbs)

Depo seviye göstergesi küçük & büyük tip (Termometreli)

Model	HL-76	Küçük Tip	Fiyat USD.-
Model	HL-127	Büyük Tip	



HL-127



High Torque Vane Motor

25HM , 35HM , 45HM

Features and Handling

High speed and high-pressure motors ranging from 43.9 to 193.2 cm³/r with 172 bar of maximum pressure and 9 torques rating choices. The internal inlet chambers are equally and diametrically opposed resulting in balanced in radial loads.

Thus, the motors are hydraulically balanced which reduced wear and heat from friction.

These motors provide 90% efficiency due to dual pressure plates, which produced low internal leakage. Motors are bi-rotational, simply reversed by reversing in flow direction.



Specifications

Model Series	Torque Nm/6.9 bar (lb in/100 psi)	Displacement cm ³ /r (in ³ /r)	Flow input/ required @ 1200 r/min L/min (Usqpm)	Maximum speeds & pressure	Approx Weight kg (lb)	USD.-
25HM	3.3 (30)	29.0 (1.77)	34.8 (9.19)	3600 r/min @ 34 bar (500 psi) ¹⁾ 4000 r/min @ 34 bar (500 psi) ²⁾	18 (40)	
	4.7 (42)	43.9 (2.68)	52.6 (13.9)			
	6.2 (55)	57.7 (3.52)	69.3 (18.3)			
	7.3 (65)	68.7 (4.19)	82.5 (21.8)			
35HM	9.0 (80)	83.6 (5.10)	100.3 (26.5)	2400 r/min @ 155 bar (2250 psi) ¹⁾ 3000 r/min @ 172 bar (2500 psi) ²⁾	29 (64)	
	10.7 (95)	100.3 (6.12)	120.4 (31.8)			
	13.0 (115)	121.9 (7.44)	146.1 (38.6)			
45HM	14.7 (130)	138.0 (8.42)	165.4 (43.7)		39 (85)	
	17.5 (155)	163.2 (9.96)	195.7 (51.7)			
	20.9 (185)	193.2 (11.79)	232.0 (61.3)			

1) Continuous Operation

2) Intermittent Operation

CKIT 25HM

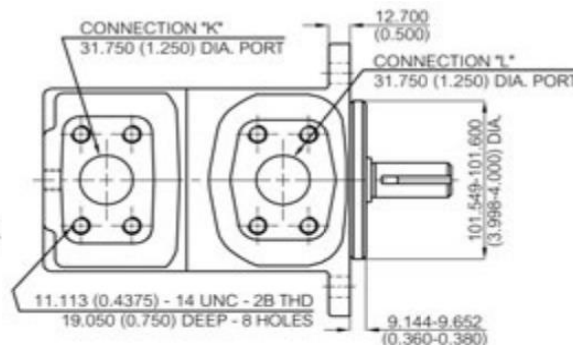
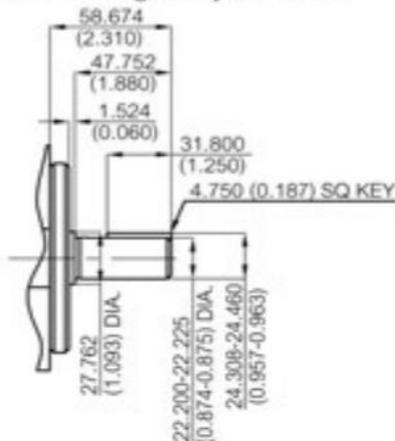
CKIT 35HM

CKIT 45HM

Installation Dimensions mm (inch)

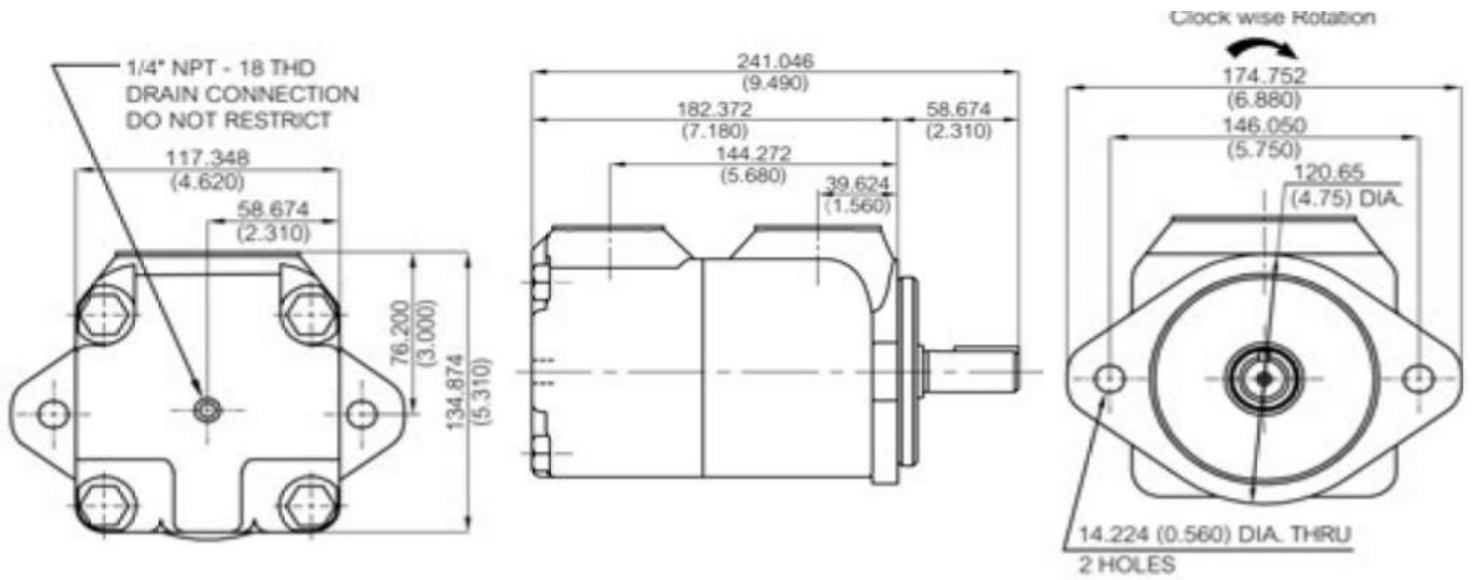
25HM

25HM Series No.1 Straight-keyed Shaft



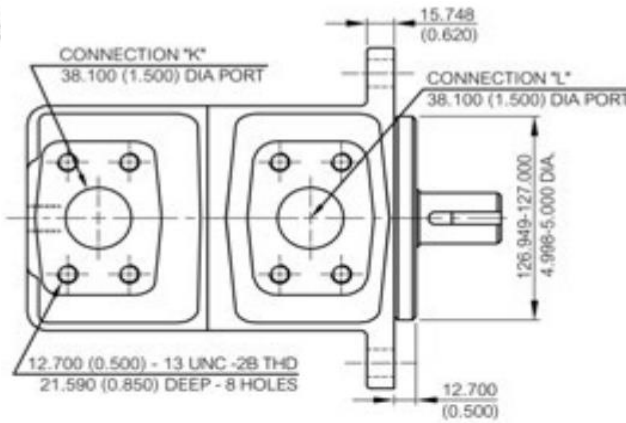
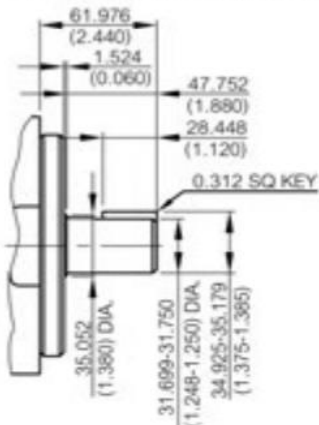
25HM Series No.11 SAE Involute Spline Shaft



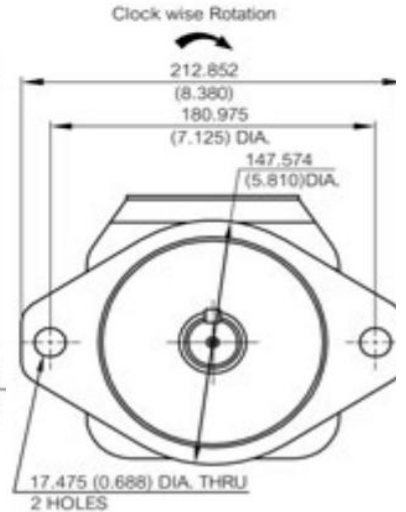
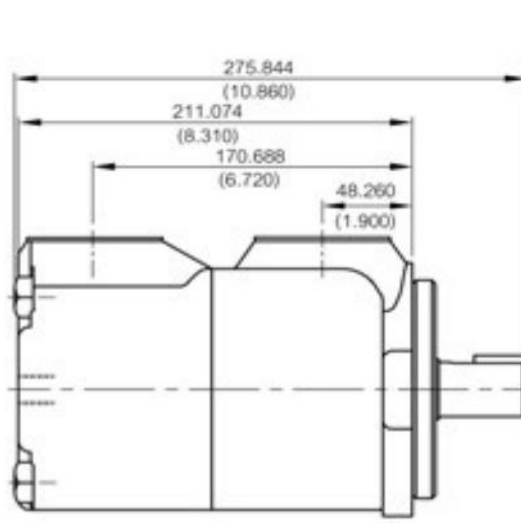
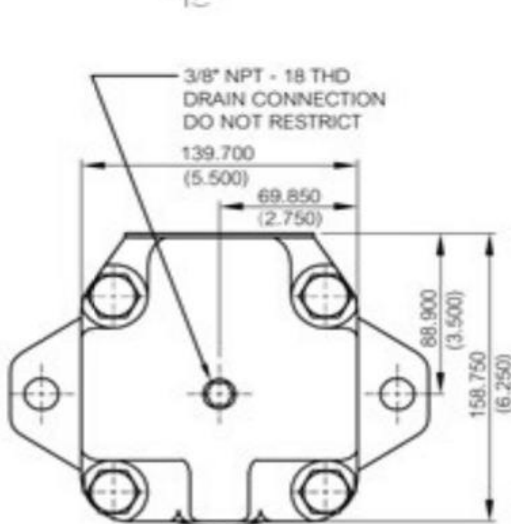
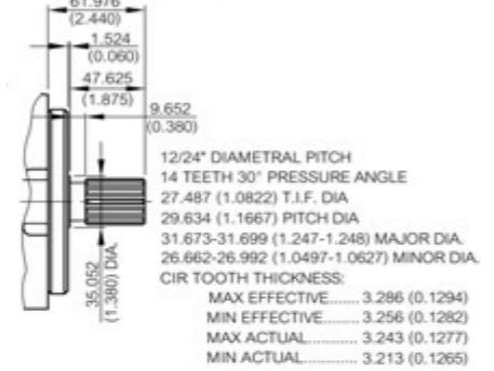


35HM

35HM Series No.1 Straight - keyed Shaft

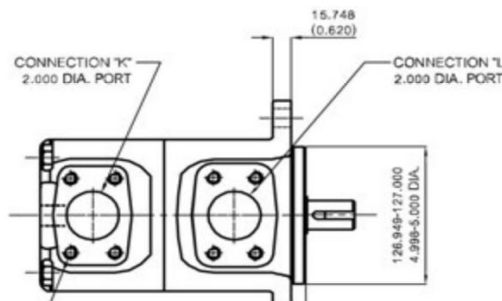
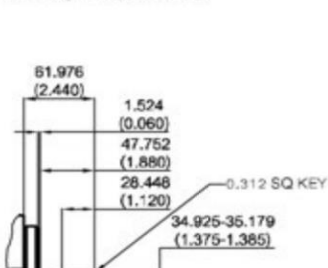


35HM Series No.11 SAE Involute Spline Shaft

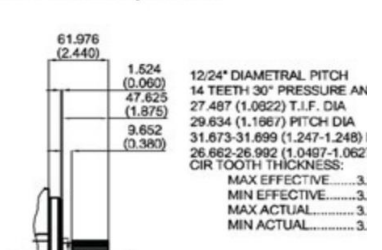


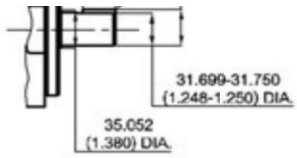
45HM

45M Series No.1 Straight-keyed Shaft

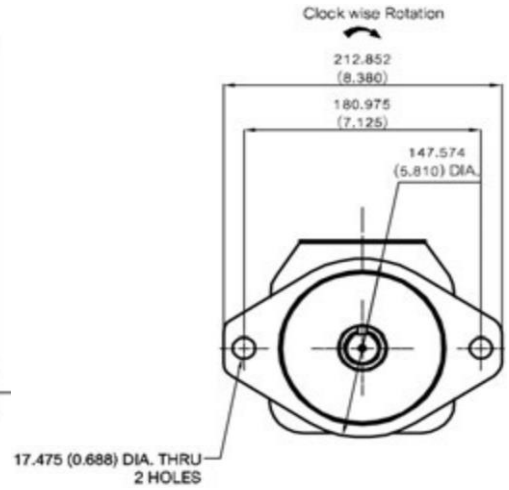
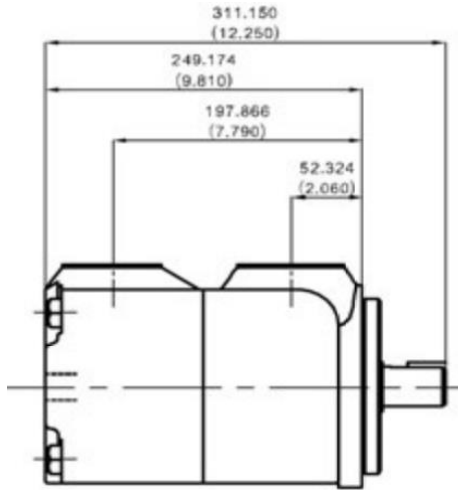
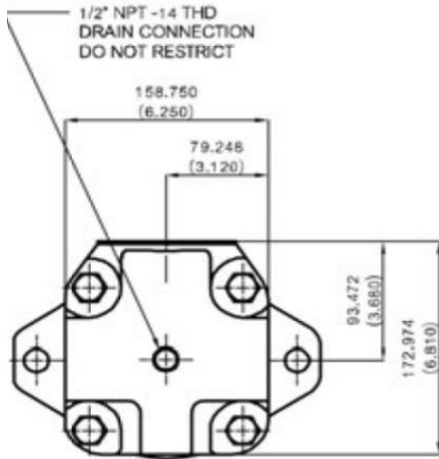
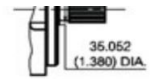
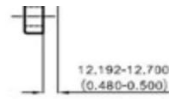


45M Series No.11 SAE Involute Spline Shaft





12.700 (0.500) -13 UNC -2B THD
22.225 (0.875) DEEP -8 HOLES



High Torque Vane Motor HM2-210 Series

Features

HM2 spring loaded vane motors suitable for industrial and mobile applications. The wide range of speeds and pressure make ideal for most motor applications.

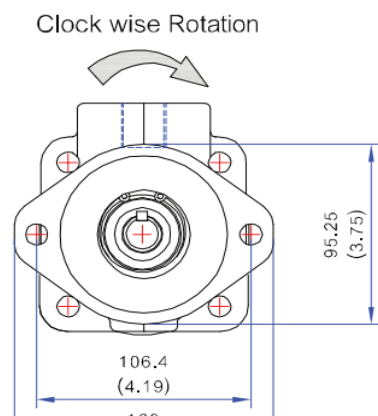
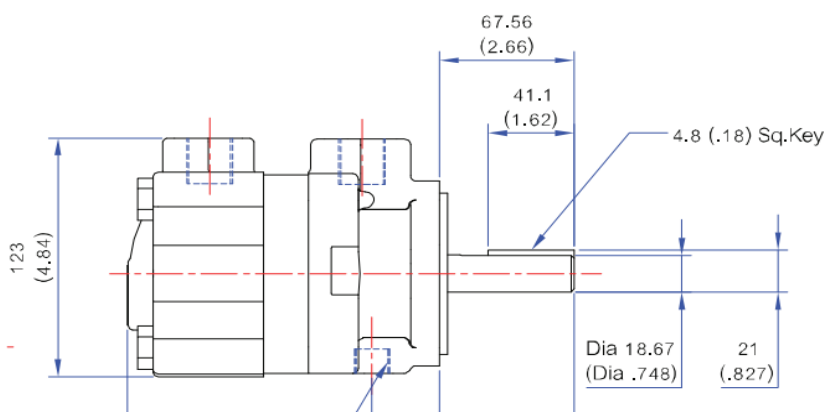
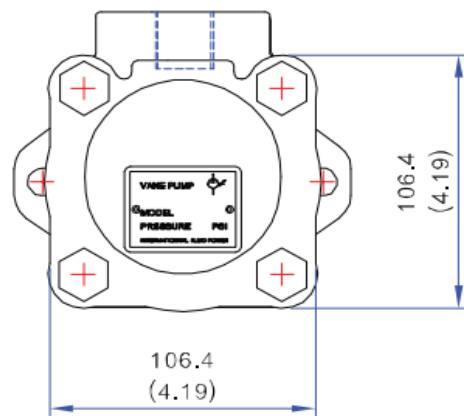
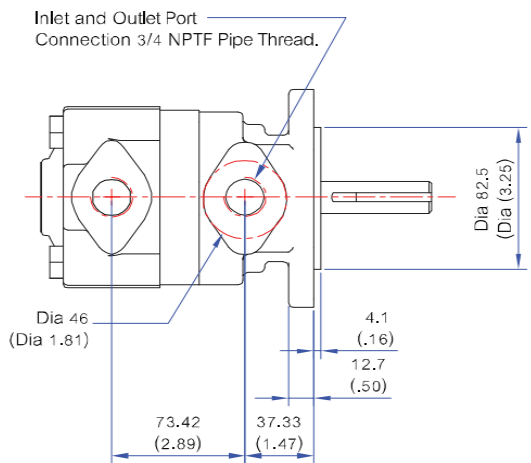
Motors are constructed with spring loaded vanes offering smooth operation over a wide speed range.

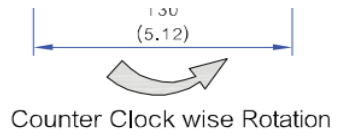
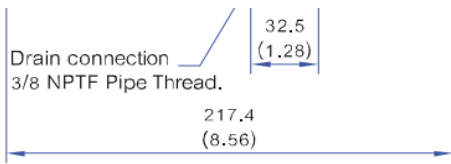
Motors can be reserved or stalled underload without damage to the unit when proper relief protection is applied. A full size unrestricted drain line must be connected directly from case drain to reservoir return located below the lowest fluid level in the system.



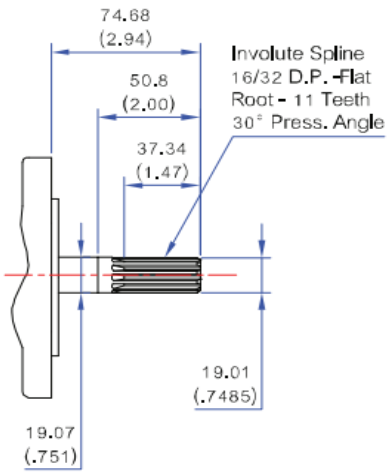
Model Series	Torque Nm/6.9 bar (lb in/100 psi)	Displacement cm ³ /r (in ³ /r)	Maximum speeds & pressure	Approx Weight kg (lb)
HM2-210	88.9 (3.50)	50.8 (2.00)	2200 r/min @ 138 bar (2000 psi)	9.5 (21)
HM2-220	47.7 (1.88)	22.2 (0.88)	1800 r/min @ 121 bar (1750 psi)	

Installation Dimensions mm (inch)





Splined (No.11)



Weight : 8.9 Kg (19.58 lb)

High Pressure Single Vane Pump HT6GC Series (TRUCK Pump)

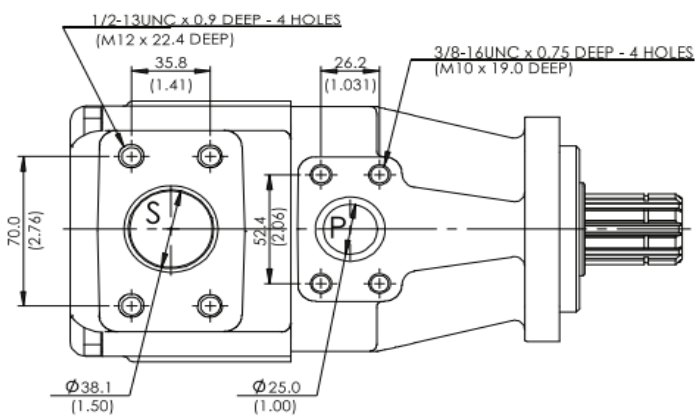
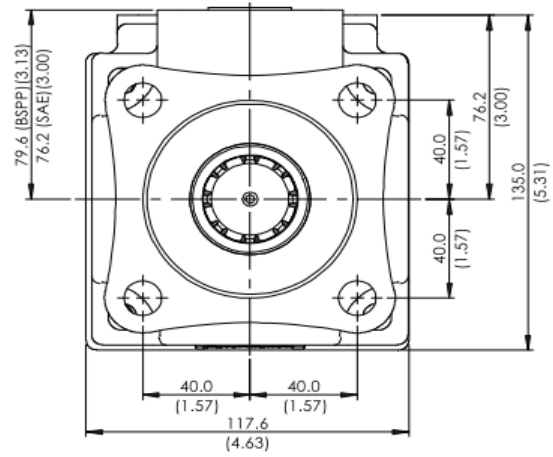
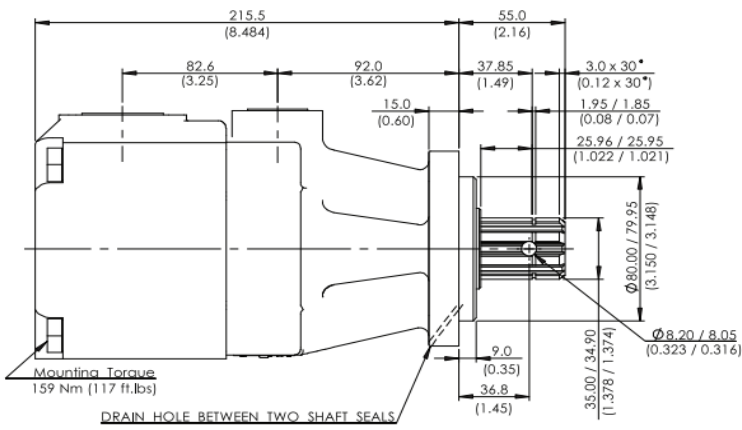
Features

HT6GC Series is a fixed displacement and balanced type single vane pump. The pump is designed for higher load than HT6CM pump by having double row ball bearing with needle bearing and 2 shaft seals.

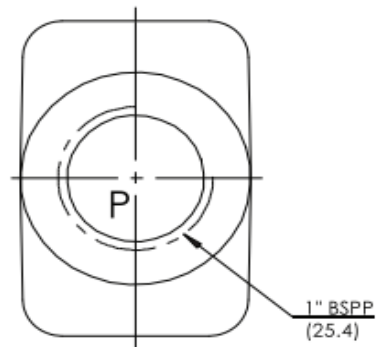
Can be connected to PTO directly.



Installation Dimensions mm (inch)



CODE 00



Size	Displacement	Max Speed	Min Speed	Max intermittent Pressure	Max Continuous Pressure	Weight
	cm ³ /r (in ³ /r)	rpm	rpm	bar (psi)	bar (psi)	kg (lb)
003	10.8 (0.66)	2800	600	280 (4000)	240 (3500)	17.5 (38.5)
005	17.2 (1.05)					
006	21.3 (1.30)					
008	26.4 (1.61)					
010	34.1 (2.08)					
012	37.1 (2.26)					
014	46.0 (2.81)					
017	58.3 (3.56)					
020	63.8 (3.89)					
022	70.3 (4.29)					
025	79.3 (4.84)	2500	600	210 (3000)	160 (2300)	
028	88.8 (5.42)					
031	100.0 (6.10)					

*Performance Characteristics same as HT6C

High Pressure Double Vane Pump HT6GCC Series

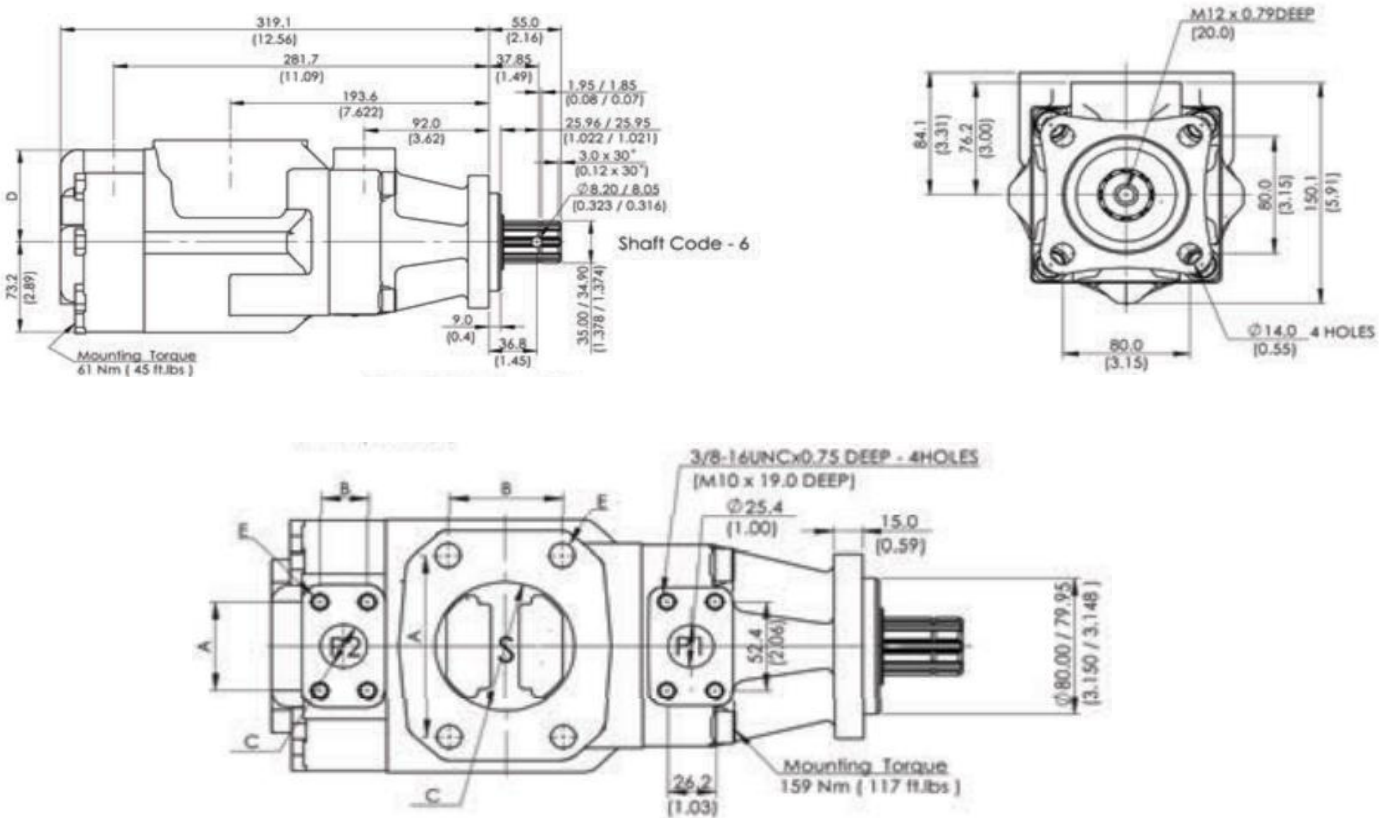
Features

HT6GCC Series is fixed displacement and balanced type double vane pump. The pump is designed for higher load than HT6CM pump by having double row ball bearing with needle bearing and 2 shaft seals.

Can be connected to PTO directly.



Specifications and Installation Dimensions mm (inch)



PORT	A	B	C	D	E
S	106.4 (4.19)	61.9 (2.44)	Ø76.2 (3.00)		5/8" - 11 UNC x 1.12 DEEP (M16 x 28.4 DEEP)
S	88.9 (3.50)	50.8 (2.00)	Ø63.5 (2.50)		1/2" - 13 UNC x 0.94 DEEP (M12 x 24.0 DEEP)
P2	47.7 (1.88)	22.2 (0.88)	Ø19.0 (0.75)	76.2 (3.00)	3/8" - 16 UNC x 0.75 DEEP (M10 x 19.0 DEEP)
P2	52.4 (2.06)	26.2 (1.03)	Ø25.4 (1.00)	74.7 (3.94)	

Shaft End Pump				Cover End Pump				Max Speed
Size	Displacement	Max intermittent Pressure	Max Continuous Pressure	Size	Displacement	Max intermittent Pressure	Max Continuous Pressure	
	cm ³ /r (in ³ /r)	bar (psi)	bar (psi)		cm ³ /r (in ³ /r)	bar (psi)	bar (psi)	
003	10.8 (0.66)	280 (4000)	240 (3500)	003	10.8 (0.66)	280 (4000)	240 (3500)	2800
005	17.2 (1.05)			005	17.2 (1.05)			
006	21.3 (1.30)			006	21.3 (1.30)			
008	26.4 (1.61)			008	26.4 (1.61)			
010	34.1 (2.08)			010	34.1 (2.08)			
012	37.1 (2.26)			012	37.1 (2.26)			
014	46.0 (2.81)			014	46.0 (2.81)			
017	58.3 (3.56)			017	58.3 (3.56)			
020	63.8 (3.89)			020	63.8 (3.89)			
022	70.3 (4.29)			022	70.3 (4.29)			
025	79.3 (4.84)			025	79.3 (4.84)			
028	88.8 (5.42)			210 (3000)	160 (2300)			
031	100.0 (6.10)	031	100.0 (6.10)					

*Performance Characteristics same as HT6C, HT6CC