



(CETOP 3) NG 6 BOBİNLİ YÖN - KONTROL VALFLERİ

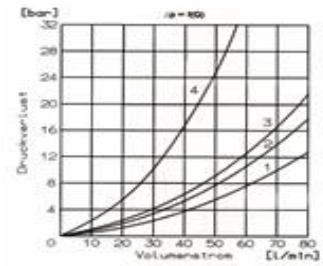
Tipi CETOP 3	Norm NG 6	Konum Spool Tipi	Voltaj AC-DC	Max. Debi Lt/dk	Fiyat Euro.-
WE 06 DA 08 A	1/4"	NG-6 4/2 TB	12	60	
WE 06 DA 08 A	1/4"	NG-6 4/2 TB	24	60	
WE 06 DA 08 A	1/4"	NG-6 4/2 TB	220 (205VDC)	60	

WE 06 DA 01 C	1/4"	NG-6 4/3 KM	12	60	
WE 06 DA 01 C	1/4"	NG-6 4/3 KM	24	60	
WE 06 DA 01 C	1/4"	NG-6 4/3 KM	220 (205VDC)	60	

WE 06 DA 03 C	1/4"	NG-6 4/3 HM	12	60	
WE 06 DA 03 C	1/4"	NG-6 4/3 HM	24	60	
WE 06 DA 03 C	1/4"	NG-6 4/3 HM	220 (205VDC)	60	

WE 06 DA 04 C	1/4"	NG-6 4/3 ABT	12	60	
WE 06 DA 04 C	1/4"	NG-6 4/3 ABT	24	60	
WE 06 DA 04 C	1/4"	NG-6 4/3 ABT	220 (205VDC)	60	

WE 06 DA 09 C	1/4"	NG-6 4/3 AM	12	60	
WE 06 DA 09 C	1/4"	NG-6 4/3 AM	24	60	
WE 06 DA 09 C	1/4"	NG-6 4/3 AM	220 (205VDC)	60	



(CETOP 5) NG 10 BOBİNLİ YÖN - KONTROL VALFLERİ

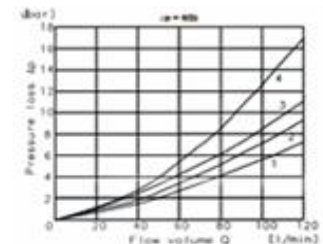
Tipi CETOP 5	Norm NG 10	Konum Spool Tipi	Voltaj AC-DC	Max. Debi Lt/dk	Fiyat Euro.-
WE 10 DB 08 A	1/2"	NG-10 4/2 TB	12	120	
WE 10 DB 08 A	1/2"	NG-10 4/2 TB	24	120	
WE 10 DB 08 A	1/2"	NG-10 4/2 TB	220 (205VDC)	120	

WE 10 DB 01 C	1/2"	NG-10 4/3 KM	12	120	
WE 10 DB 01 C	1/2"	NG-10 4/3 KM	24	120	
WE 10 DB 01 C	1/2"	NG-10 4/3 KM	220 (205VDC)	120	

WE 10 DB 03 C	1/2"	NG-10 4/3 HM	12	120	
WE 10 DB 03 C	1/2"	NG-10 4/3 HM	24	120	
WE 10 DB 03 C	1/2"	NG-10 4/3 HM	220 (205VDC)	120	

WE 10 DB 04 C	1/2"	NG-10 4/3 ABT	12	120	
WE 10 DB 04 C	1/2"	NG-10 4/3 ABT	24	120	
WE 10 DB 04 C	1/2"	NG-10 4/3 ABT	220 (205VDC)	120	

WE 10 DB 09 C	1/2"	NG-10 4/3 AM	12	120	
WE 10 DB 09 C	1/2"	NG-10 4/3 AM	24	120	
WE 10 DB 09 C	1/2"	NG-10 4/3 AM	220 (205VDC)	120	

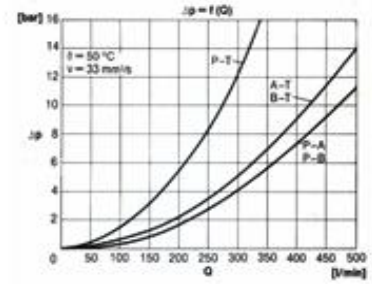
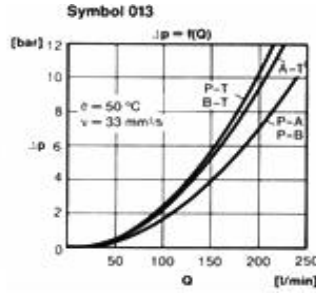


(CETOP 7) NG 16 GÖVDE + PILOT YÖN DENETİM VALFİ

Tipi CETOP 7	Norm NG 16	Kontrol Spool Tipi (Gövde)	Max. Bas. Bar	Max. Debi (Lt/dak)		Fiyat Euro.-
				(320 Bar'da)	(210 Bar'da)	
WE 16 DA 08 A	5/8"	NG-16 TB	320	300	250	
WE 16 DA 01 C	5/8"	NG-16 KM	320	300	250	
WE 16 DA 03 C	5/8"	NG-16 HM	320	300	250	
WE 16 DA 04 C	5/8"	NG-16 ABT	320	300	250	
WE 16 DA 09 C	5/8"	NG-16 AM	320	300	250	
WE 16 DA 09 C-C	5/8"	NG-16 AM-Check	320	300	250	

(CETOP 8) NG 25 GÖVDE + PILOT YÖN DENETİM VALFİ

Tipi CETOP 8	Norm NG 25	Kontrol Spool Tipi (Gövde)	Max. Bas. Bar	Max. Debi (Lt/dak)		Fiyat Euro.-
				(320 Bar'da)	(210 Bar'da)	
WE 25 DA 08 A	3/4"	NG-25 TB	320	600	500	
WE 25 DA 01 C	3/4"	NG-25 KM	320	600	500	
WE 25 DA 03 C	3/4"	NG-25 HM	320	600	500	
WE 25 DA 04 C	3/4"	NG-25 ABT	320	600	500	
WE 25 DA 09 C	3/4"	NG-25 AM	320	600	500	
WE 25 DA 09C-C	3/4"	NG-25 AM-Check	320	600	500	



(CETOP 3) NG 6 MANUAL (KOL KUMANDA) KONTROL VALFLERİ

Tipi CETOP 3	Kod	Norm NG 6	Konum Spool Tipi	Max. Debi Lt/dk	Fiyat Euro.-
06-002.00/081.12/068.00.0	102474	1/4"	NG-6 4/2 TB	60	
06-001.00/011.12/069.00.0	161374	1/4"	NG-6 4/3 KM	60	
06-001.00/041.12/069.00.0	102468	1/4"	NG-6 4/3 ABT	60	
06-001.00/091.12/069.00.0	102472	1/4"	NG-6 4/3 AM	60	

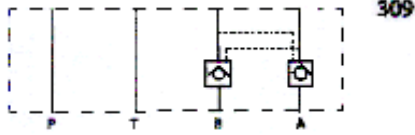


(CETOP 5) NG 10 MANUAL (KOL KUMANDA) KONTROL VALFLERİ

Tipi CETOP 5	Kod	Norm NG 10	Konum Spool Tipi	Max. Debi Lt/dk	Fiyat Euro.-
10-002.00/081.12/068.00.0	102474	1/2"	NG-10 4/2 TB	120	
10-001.00/011.12/069.00.0	161374	1/2"	NG-10 4/3 KM	120	
10-001.00/041.12/069.00.0	102468	1/2"	NG-10 4/3 ABT	120	
10-001.00/091.12/069.00.0	102472	1/2"	NG-10 4/3 AM	120	

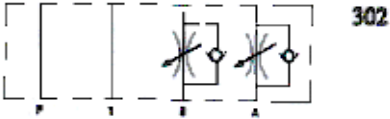
MODÜLER İKİZ KİLITLEME VALFLERİ NG6-NG10

Tipi CETOP 3-5	Kontrol Pozisyonu	Bağlantı Normu	Max. Basınç Bar	Max. Debi Lt/dk.	Fiyat Euro.-
HV 06-309-1-V	AB Hattı	NG6	320	40	
HV 10-309-0-E	AB Hattı	NG10	250	80	



MODÜLER İKİZ KISMA VALFLERİ NG6-NG10

Tipi CETOP 3-5	Kontrol Pozisyonu	Bağlantı Normu	Max. Basınç Bar	Max. Debi Lt/dk.	Fiyat Euro.-
HV -06-302-0-L	AB Hattı	NG6	250	40	
HV-10-302-0-L	AB Hattı	NG10	250	80	



MODÜLER BASINÇ DÜŞÜRÜCÜLER NG06-NG10

Tipi CETOP 3-5	Kontrol Pozisyonu	Bağlantı Normu	Max. Basınç Bar	Max. Debi Lt/dk.	Fiyat Euro.-
HV-06-325-05-L-A	P Hattı	NG6	320	40	
HV-10-325-05-L-A	P Hattı	NG10	250	80	



H.SEEHAUSEN VALF BOBINLERİ NG06/NG10

Tipi	Voltaj	Kod	Ölçü/Diam	Fiyat/ Euro.-
Valf Bobini NG06	12 VDC	BM45-13604COA	21,5mm.	
Valf Bobini NG06	24 VDC	BM45-13604COB	21,5mm.	
Valf Bobini NG06	110 VAC	BM45-13604EOA	21,5mm.	
Valf Bobini NG06	220VAC (205VDC)	BM45-13604EOB	21,5mm.	

Valf Bobini NG10	12V DC	BM45-13606COA	31mm.	
Valf Bobini NG10	24V DC	BM45-13606COB	31mm.	
Valf Bobini NG10	110V AC	BM45-13606EOA	31mm.	
Valf Bobini NG10	220AC (205VDC)	BM45-13606EOB	31mm.	

Not : 205VDC / 220VAC

