

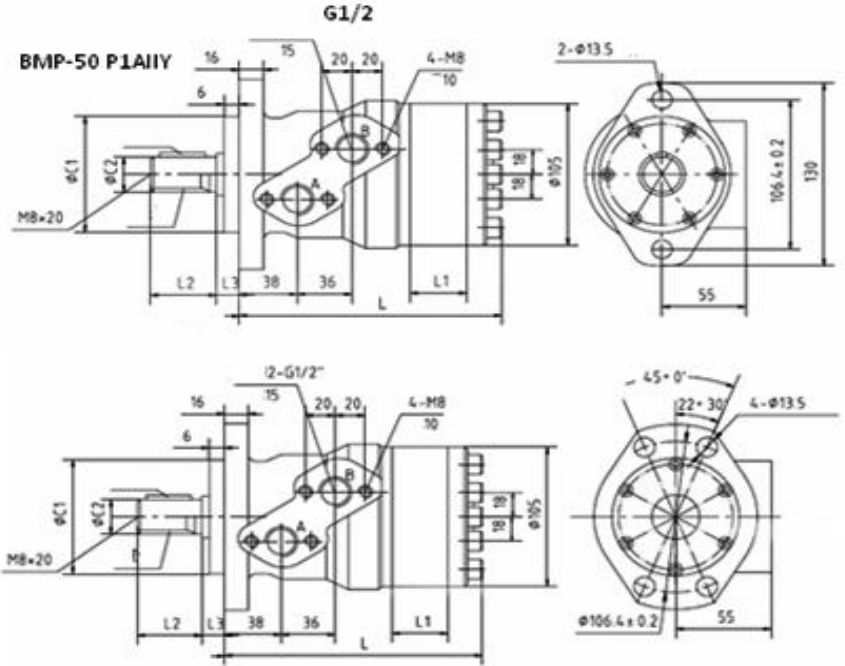


BMP-80 P1AIIY

(BMP) Q25 mil çap ORBIT MOTORLAR

TYPE	BMP P1AIIY	BMP-50	BMP-80	BMP-100	BMP-125	BMP-160	BMP-200	BMP-250	BMP-315	BMP-400
Displacement (ml/r)		50	80,5	100	125,7	159,7	200	250	314,9	389
Max. Pressure. Drop (Cont.) (Mpa)		14	14	14	14	14	14	11	9	7
Max. Torque (Cont.) (N.m)		89	150	191	235	307	365	378	378	348
Speed. Range (Cont.) (r/Min)		10-775	10-750	10-600	9-475	7-375	5-300	5-240	5-190	5-160
Max. Flow (Cont.) (L/Min)		40	60	60	60	60	60	60	60	60
Max. Output.Power (Cont.) (Kw)		7	10	10	10	10	8	6	5	4
Max. Inlet Pressure (Cont.) (Mpa)		17,5	17,5	17,5	17,5	17,5	17,5	17,5	17,5	17,5
Weight (Kg)		5,6	5,7	5,9	6.0	6,2	6,4	6,6	6,9	7,4
Length (Mm)	L1	9	14	17,5	22	28	35	44	5	70
	L	141	144,5	147	150	155	160	166	176	186
Fiyat Euro.-										

Seal Kit /Tamir Tk.



Code In (out) Let

Y	G1/2
Y1	M18X 1,5
Y2	M22X 1,5
Y5	7/8 -14 UNF
Y8	NPT 1/2

Code	Name	Dia	Key Data	L2	W.Length	Code	C1	L3	Code	C1	L3
P1	Flat Key	25h7	8x32	43	-	A	82,5H8	11,3	A II	82,5H8	11,3
P2		30h7	8x32	43	-	A1	80H8	11,3	A1 II	80H8	11,3
P3		25.4h7	6,35x32	43	-	A10	82,5H8	6,5	A10 II	82,5H8	6,5
P11	Splined Key	25h7	8x32	38	-	A11	80H8	6,5	A11 II	80H8	6,5
H1		30h7	6-30X25b1	43	32	AIV	82,5H8	11,3			
H2		25h7	6-25X21b1	43	32						

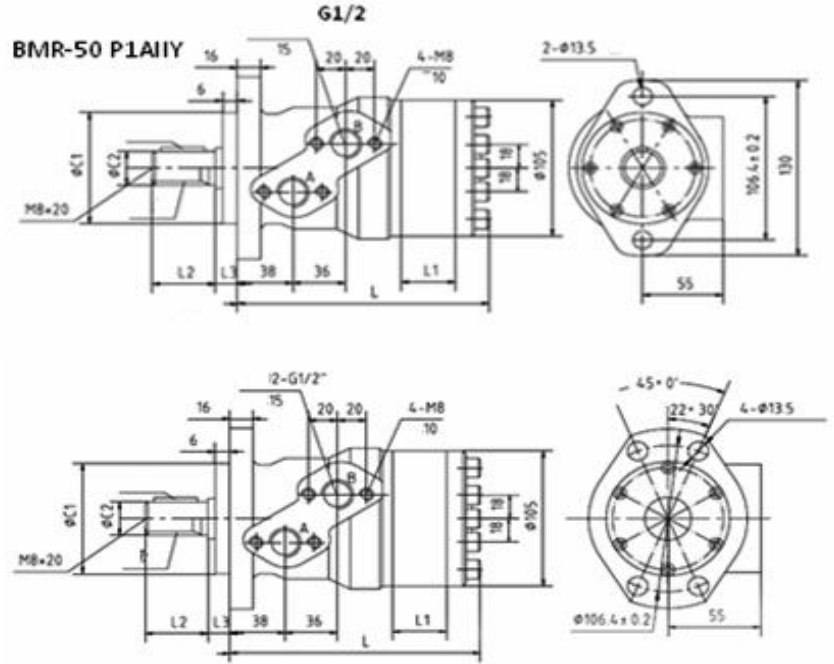


BMR-100 P1AIY

(BMR) Q25 mil çap ORBİT MOTORLAR

TYPE	BMR P1AIY	BMR-50	BMR-80	BMR-100	BMR-125	BMR-160	BMR-200	BMR-250	BMR-315	BMR-400
Displacement (ml/r)		50	80,5	100	125,7	159,7	200	250	314,9	389
Max. Pressure. Drop (Cont.) (Mpa)		14	14	14	14	14	14	11	9	7
Max. Torque (Cont.) (N.m)		93	152	194	237	310	369	380	380	360
Speed. Range (Cont.) (r/Min)		10-775	10-750	10-600	9-475	7-375	5-300	5-240	5-190	5-160
Max. Flow (Cont.) (L/Min)		40	60	60	60	60	60	60	60	60
Max. Output.Power (Cont.) (Kw)		7	10	10	10	10	8	6	5	4
Max. Inlet Pressure (Cont.) (Mpa)		17,5	17,5	17,5	17,5	17,5	17,5	17,5	17,5	17,5
Weight (Kg)		6,5	6,9	7	7,3	7,5	8	8,5	9	11
Length (Mm)	L1	9	14	17,5	22	28	35	44	5	70
	L	139	144	147,5	152	158	165	174	186	200
Fiyat Euro.-										

Seal Kit /Tamir Tk.



Code	In (out) Let
------	--------------

Y	G1/2
Y1	M18X 1,5
Y2	M22X 1,5
Y5	7/8 -14 UNF
Y8	NPT 1/2

Code	Name	Dia	Key Data	L2	W.Length	Code	C1	L3	Code	C1	L3
P1	Flat Key	25h7	8x32	43	-	A	82,5H8	11,3	A II	82,5H8	11,3
P2		30h7	8x32	43	-	A1	80H8	11,3	A1 II	80H8	11,3
P3		25.4h7	6,35x32	43	-	A10	82,5H8	6,5	A10 II	82,5H8	6,5
P11		25h7	8x32	38	-	A11	80H8	6,5	A11 II	80H8	6,5
H1	Splined Key	30h7	30X25b12X6c	43	32	AIV	82,5H8	11,3			
H2		25h7	25X21b12X5c	43	32						



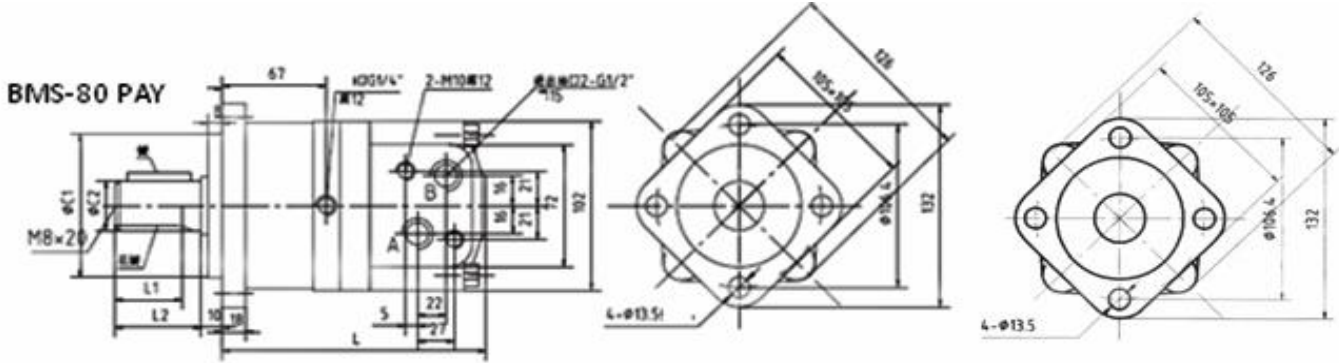
BMS-PAY

BMS-PAY (Kare Flanş/Kare Gövde) Q32 mil çap ORBİT MOTORLAR

TYPE BMS-PAY	BMS-80	BMS-100	BMS-125	BMS-160	BMS-200	BMS-250	BMS-315	BMS-400
--------------	--------	---------	---------	---------	---------	---------	---------	---------

Displacement (Ml/R)	80,5	100	125,7	159,7	200	250	314,9	389
Max. Pressure. Drop (Cont.) (Mpa)	16	16	16	14	14	11	10	8
Max. Torque (Cont.) (N.M)	175	215	270	300	378	380	425	415
Speed. Range (Cont.) (R/Min)	10-810	10-750	9-600	7-470	6-375	6-300	5-240	5-180
Max. Flow (Cont.) (R/Min)	65	75	75	75	75	75	75	75
Max. Output.Power (Cont.) (Kw)	14	16	16	14	14	11	10	8
Max. inlet Pressure (Cont.) (Mpa)	20	30	20	20	20	17,5	17,5	17,5
Weight (Kg)	9,8	10	10,3	10,7	11,1	11,6	12,3	13,1
Length (MM)	167	170	175	181	188	197	208	222
Fiyat Euro.-								

Seal Kit /Tamir Tk.



Codee	Name	Dia	Key Data	L1	L2
-------	------	-----	----------	----	----

P	Flat Key	32H7	10X45	-	56,5
P1		25H7	8X32	-	40,5
P2		32H7	10X40	-	49,5
P3		25,4H7	6,35X32	-	41,5
H1	Splined Key	30H7	10X25B12X6E	32	45,5
H2		25H7	15X21B12X5E	32	45,5

Code	C1
------	----

Cood	In (out) Let
------	--------------

A	82,5H8
A1	80H8
A II	82,5H8
A1 II	80H8
AIV	82,5H8

Y	G1/2	G1/4
Y1	M18X 1,5	M14X 1,5
Y2	M22X 1,5	M14X 1,5
Y5	7/8 -14 UNF	7/8 -20 UNF
Y8	NPT 1/2	G1/4



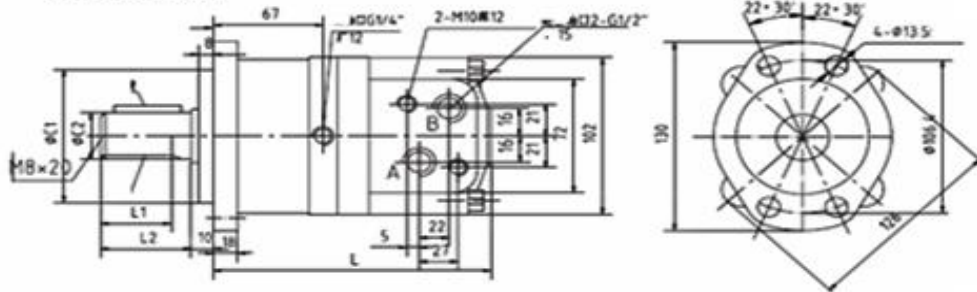
BMS Dört
Kulak Bağlantı

BMS-PAIVY (Dört Kulak Bağlantı) Q32 mil çap ORBİT MOTORLAR

TYPE BMS-PAIVY	BMS-80	BMS-100	BMS-125	BMS-160	BMS-200	BMS-250	BMS-315	BMS-400
Displacement (Ml/R)	80,5	100	125,7	159,7	200	250	314,9	389
Max. Pressure. Drop (Cont.) (Mpa)	16	16	16	14	14	11	10	8
Max. Torque (Cont.) (N.M)	175	215	270	300	378	380	425	415
Speed. Range (Cont.) (R/Min)	10-810	10-750	9-600	7-470	6-375	6-300	5-240	5-180
Max. Flow (Cont.) (R/Min)	65	75	75	75	75	75	75	75
Max. Output.Power (Cont.) (Kw)	14	16	16	14	14	11	10	8
Max. inlet Pressure (Cont.) (Mpa)	20	30	20	20	20	17,5	17,5	17,5
Weight (Kg)	9,8	10	10,3	10,7	11,1	11,6	12,3	13,1
Length (MM)	167	170	175	181	188	197	208	222
Fiyat Euro.-								

Seal Kit /Tamir Tk.

BMS-80 PAIVY



Codee	Name	Dia	Key Data	L1	L2
P	Flat Key	32H7	10X45	-	56,5
P1		25H7	8X32	-	40,5
P2		32H7	10X40	-	49,5
P3		25,4H7	6,35X32	-	41,5
H1	Splined Key	30H7	0X25B12X6D1	32	45,5
H2		25H7	5X21B12X5D1	32	45,5

Code	C1
------	----

Cood	In (out) Let
------	--------------

A	82,5H8
A1	80H8
A II	82,5H8
A1 II	80H8
AIV	82,5H8

Y	G1/2	G1/4
Y1	M18X 1,5	M14X 1,5
Y2	M22X 1,5	M14X 1,5
Y5	7/8 -14 UNF	7/8 -20 UNF
Y8	NPT 1/2	G1/4

hydromot[®]



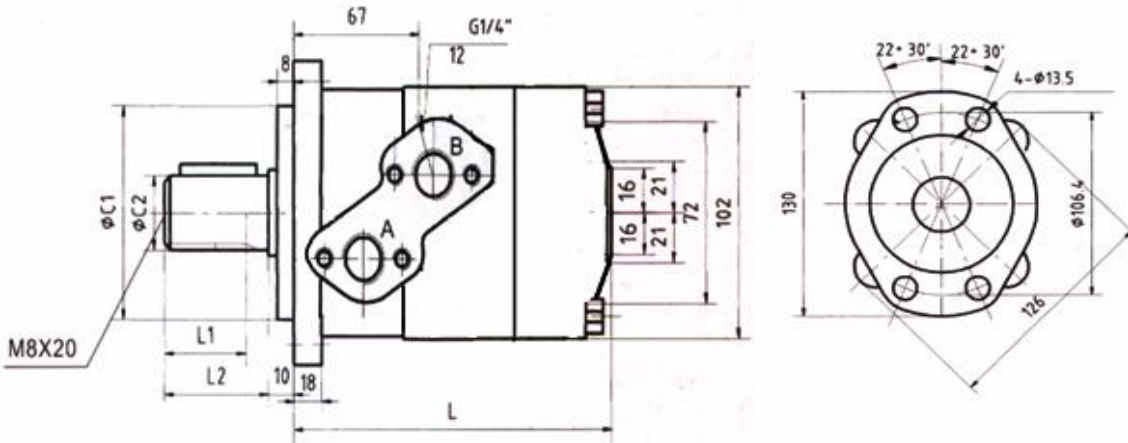
BMH

(BMH) Q 32 mil ap ORBİT MOTORLAR

TYPE	Mil apı	Depl.	Hız	Basın	Max. torq	Max. Debi	Fiyat
BMH (OMH)	mm.	cc/dev.	d/dk.	bar	daNm.	Lt/dk.	Euro.-

BMH 200	32	201,3	370	175	51	75	
BMH 250	32	252	295	175	61	75	
BMH 315	32	314,9	235	135	59	75	
BMH 400	32	396,8	185	105	59	75	
BMH 500	32	502,4	150	90	58	75	

BMH P Dia C2 32h7



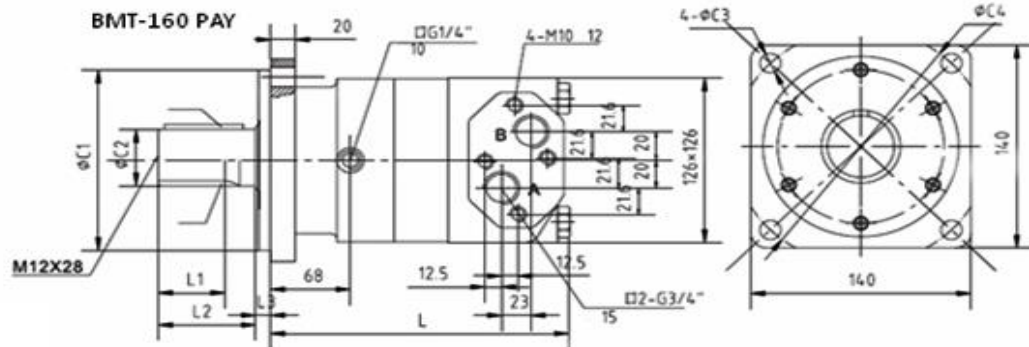


BMT- Q 40 mil çap ORBİT MOTORLAR

BMT-PAY

TYPE BMT-PAY	BMT-160	BMT-200	BMT-250	BMT-320	BMT-400	BMT-500
Displacement (ml/r)	158,7	200,8	252,2	320	400	535
Max. Pressure. Drop (Cont.) (Mpa)	18	18	18	18	16	14
Max. Torque (Cont.) (N.m)	408	504	630	807	896	1049
Speed. Range (Cont.) (r/min)	10-625	9-625	8-500	7-380	6-305	5-240
Max. Flow (Cont.) (L/Min)	100	125	125	125	125	125
Max. Output.Power (Cont.) (Kw)	20,1	25,2	25,2	25,2	22	31
Max. Inlet Pressure (Cont.) (Mpa)	21	21	21	21	21	21
Weight (Kg)	20,3	20,8	21,4	22,4	23	24
Length (mm)	210	214,5	220	227	228	239
Fiyat Euro.-						

Seal Kit /Tamir Tk.



Code	Name	Dia	Key Data	L1	L2	L3
P	Flat Key	Q40H7	12X50	-	60	15
P1		Q32H7	10X50	-	60	15
P2		Q40H7	12X30	-	43	15
P3		Q40H7	12X70	-	82	32
H2	Splined Key	Q25F7	6-25X22B12X6D10	35	61,5	15
H3		Q38F7	8-38X30B12X6D10	40	61,5	15
H4		Q35F7	6-35X29B12X10D10	40	61,5	15
H5		Q35F7	6-35X29B12X6D10	40	61,5	15
K2	Involute Spline	Q38,25F7	m2,25 z16 a30*	35	60	15
K3		Q38,1F7	m2, 1166 z17 a30*	56	82	32

Code	C1	C3	C4
------	----	----	----

A	125H8	14	160
A1	90H8	14	160

Code	In (out) Let	
------	--------------	--

Y	G1/2	G1/4
Y3	M27X 2	M14X 1,5
Y4	M22X 1,5	M14X 1,5
Y5	M20X 1,5	M14X 1,5

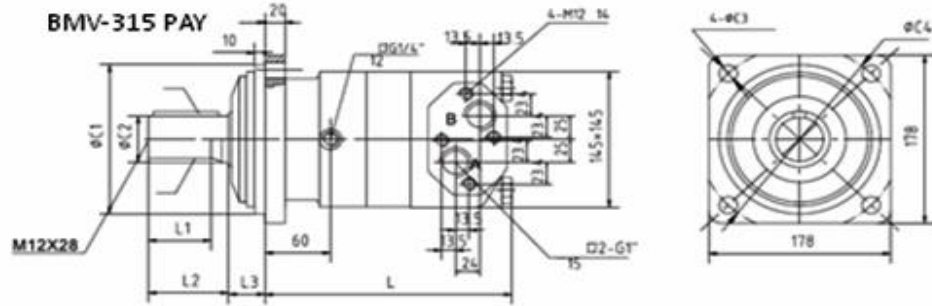


BMV-PAY

BMV Q 50 mil çap ORBIT MOTORLAR

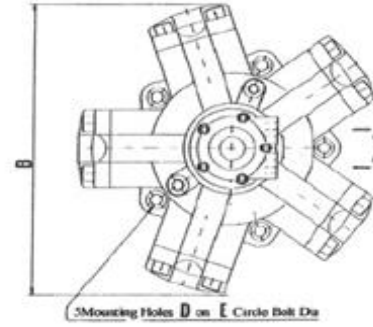
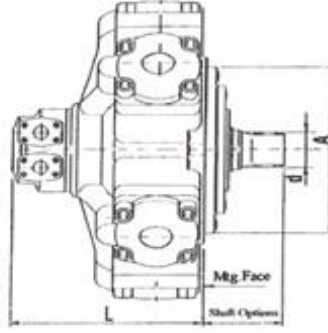
TYPE BMV-PAY	BM5-315	BM5-400	BM5-500	BM5-630	BM5-800	BM5-985
Displacement (ml/r)	312	398	496	625	797	980
Max. Pressure. Drop (Cont.) (Mpa)	18	18	18	18	16	14
Max. Torque (Cont.) (N.m)	785	992	1236	1558	1766	1900
Speed. Range (Cont.) (r/min)	10-630	9-500	8-400	6-315	5-250	5-160
Max. Flow (Cont.) (L/Min)	200	200	200	200	200	160
Max. Output. Power (Cont.) (Kw)	32	40	40	40	35	24
Max. Inlet Pressure (Cont.) (Mpa)	21	21	21	21	21	21
Weight (Kg)	30,7	31,5	32,4	33,6	35,2	37,2
Length (mm)	211	218	226	236,5	250,5	265,5
Fiyat Euro.-						

Seal Kit /Tamir Tk.



Code	Name	Dia	Key Data	L1	L2
P	Flat Key	50H7	12X50	-	79,5
P1		40H7	10X50	-	55
P2		32H7	12X30	-	55
H2	Splined Key	45F7	15X38,2B12X12D	55	79,5
H4		40F7	40X35B12X7D1	48	67
H5-1		40F7	40X35B12X10D1	55	74
K1	Involute Spline	50	m2,5 z18 a20	53	67,5
K2		44	m2,5 z16 a30	56	74
K3		45	m2,5 z17 a30	40	62
Code	C1	C3	C4	L3	
A	160	18	200	40	
A1	125	14	160	15	
A2	130	14	160	15	
A6	127	14	160	15	

Code	In (out)	Let
Y	G1/2	G1/4
Y1	G3/4	G1/4
Y2	M33X2	M14X 1,5
Y3	M27X2	M14X 1,5
Y4	M11X 1,5	M14X 1,5
Y5	M18 X1,5	M14X 1,5



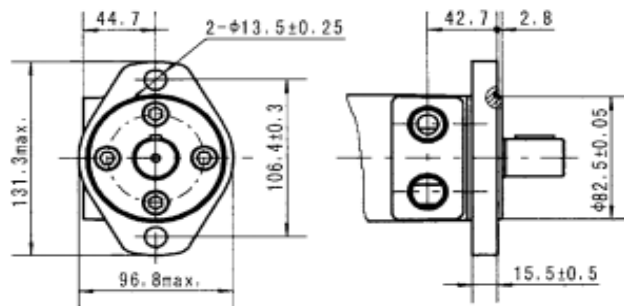
Model	A(F7)	L	B	D	E	d	Weight (Kg)
JMDG 3	190	199	298	5*13	210	38*32	35
JMDG 6	230	223	384	5*16	254	42*36	57,5
JMDG 8	256	248	452	5*17	300	50*46	72
JMDG 11	256	261	452	5*17	300	50*46	94
JMDG 16	301,5	292	510	5*21	327	72*62	170
JMDG 31	380	411	640	5*25	420	92*82	298

HYDROMOT RADIAL HİDROMOTORLAR

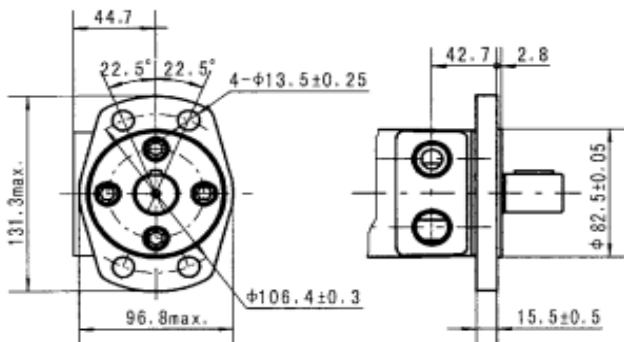
Model JMDG	Displac. (ml/r)	Pressure (Mpa)		Torque (N.m.)		Speed range (r/min)	Max.cont. Power (Kw)	Fiyat EURO-
		peak pres.	cont.pres.	(N.m.) Rate T.	N.m/Mpa Theoric T.			

JMDG3-200	199	32	25	736	29	8-630	37	
JMDG3-250	254	32	25	949	40	8-630	40	
JMDG3-300	289	25	20	864	46	6-500	40	
JMDG3-350	351	25	20	1040	55	6-400	40	
JMDG3-400	397	20	16	949	63	6-400	40	
JMDG6-400	397	32	25	1483	63	5-630	60	
JMDG6-450	452	32	25	1638	72	5-630	63	
JMDG6-500	491	25	20	1463	78	5-500	62	
JMDG6-600	594	25	20	1775	94	4-500	65	
JMDG6-700	683	20	16	1633	103	4-400	65	
JMDG6-750	754	20	16	1785	112	4-320	65	
JMDG8-600	617	32	25	2282	91	4-500	70	
JMDG8-700	710	32	25	2626	105	4-400	70	
JMDG8-800	810	25	20	2396	120	4-400	65	
JMDG8-900	889	25	20	2629	131	3-350	65	
JMDG8-1000	1000	20	16	2366	148	3-300	65	
JMDG11-700	714	32	25	2667	114	4-400	80	
JMDG11-800	782	32	25	2959	120	4-400	80	
JMDG11-1000	995	25	20	2974	158	3-320	85	
JMDG11-1100	1116	25	20	3336	177	3-320	85	
JMDG11-1200	1175	25	20	3512	187	3-320	85	
JMDG11-1300	1296	20	16	3080	206	3-250	80	
JMDG16-1400	1375	32	25	5138	210	2-400	100	
JMDG16-1600	1648	32	25	6158	262	2-320	110	
JMDG16-1800	1814	25	20	5433	283	2-320	110	
JMDG16-2000	2034	25	20	6030	323	2-250	110	
JMDG16-2400	2412	20	16	5763	384	2-250	97	
JMDG31-2500	2550	32	25	9523	405	1-200	150	
JMDG31-2800	2826	32	25	10559	443	1-200	150	
JMDG31-3000	3050	25	20	9135	485	1-200	140	
JMDG31-3150	3142	25	20	9392	500	1-200	140	
JMDG31-3500	3419	25	20	10220	544	1-200	140	
JMDG31-4000	4170	25	20	12481	665	1-160	130	
JMDG31-5000	5190	20	16	12387	825	1-160	130	

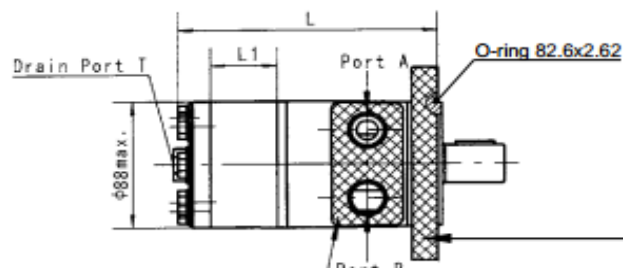
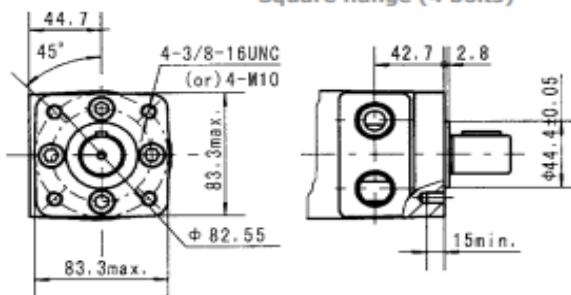
Ovalflansch SAE A (2-Loch)
Oval Mount (2 holes)



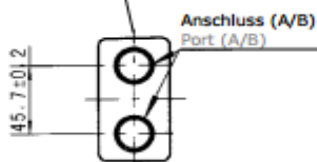
F - Magneto Flansch (4-Loch)
Magneto Mount (4 holes)



Q - Quadratflansch (4 Schrauben)
Square flange (4 bolts)



Seitenanschluss
Side ports

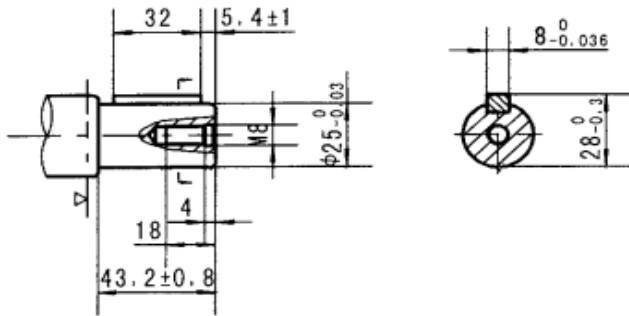


Port	Versions		
	Leer	S	P
P (A,B)	G 1/2 "	7/8-14 O-Ring	1/2-14 NPTF
T	G 1/4 "	7/16-20 UNF	7/16-20 UNF

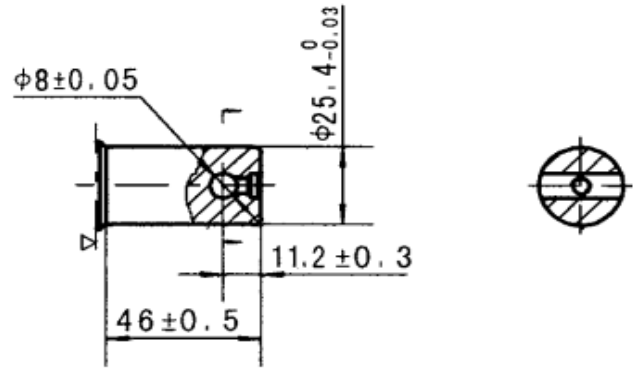
Type	L	L1	Type	L	L1
CPHM (F) 36	141	7	CPHMQ 36	147	7
CPHM (F) 50	141	7	CPHMQ 50	147	7
CPHM (F) 80	144.5	10.5	CPHMQ 80	150.5	10.5
CPHM (F) 100	147	13	CPHMQ 100	153	13
CPHM (F) 125	150	16	CPHMQ 125	156	16
CPHM (F) 160	155	21	CPHMQ 160	161	21
CPHM (F) 200	160	26	CPHMQ 200	166	26
CPHM (F) 250	166	32	CPHMQ 250	172	32
CPHM (F) 315	176	42	CPHMQ 315	182	42
CPHM (F) 400	186	52	CPHMQ 400	192	52
CPHM (F) 500	199	65	CPHMQ 500	205	65

C Q 25 mm straight , parallel key A8x7x32 .

Max. Torque : 34 daNm

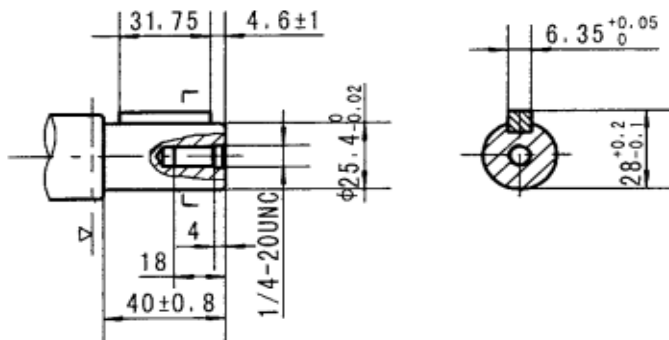


HA Q 25.4 mm straight with cross hole 8 mm



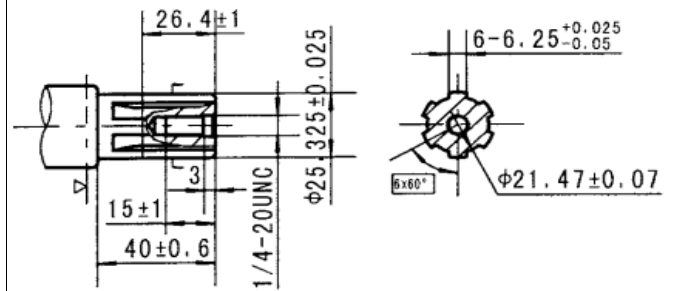
CO Q 25.4 mm (1") straight , parallel key 1/4"x1/4"x1 1/4"

Max. Torque : 34 daNm

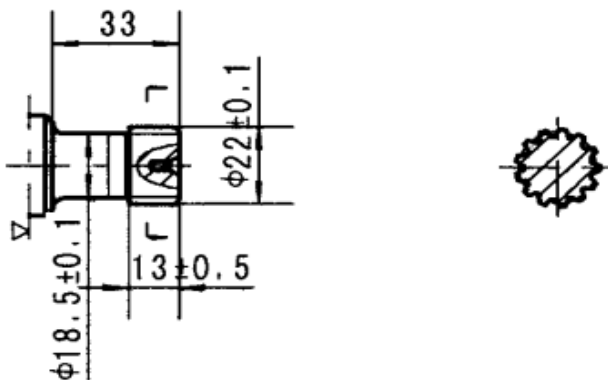


SH Splined (SAE 6B) .

Max. Torque : 40 daNm

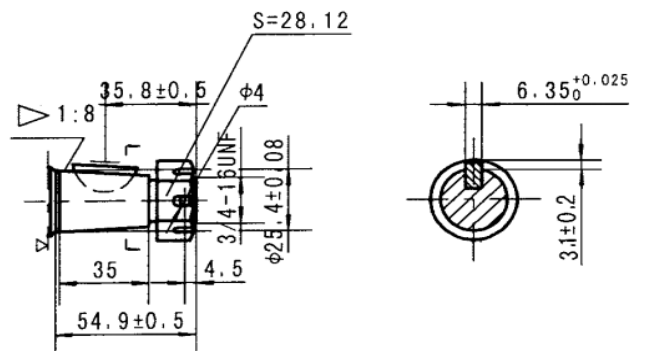


S1 Splined , 13 T , DP 16/32.



KA conical 1:8 , SAE J 501 , parallel key Q 25.4 x 6.35

Max. Torque : 77 daNm

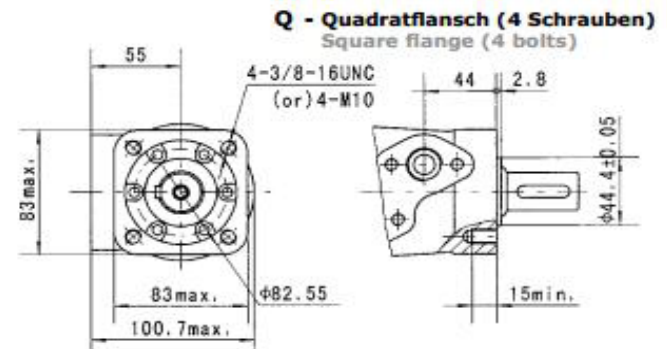
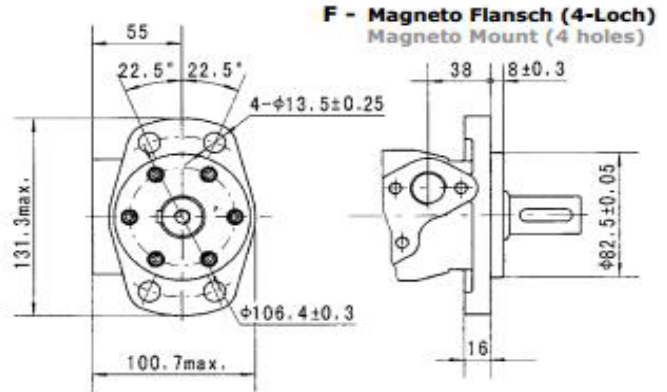
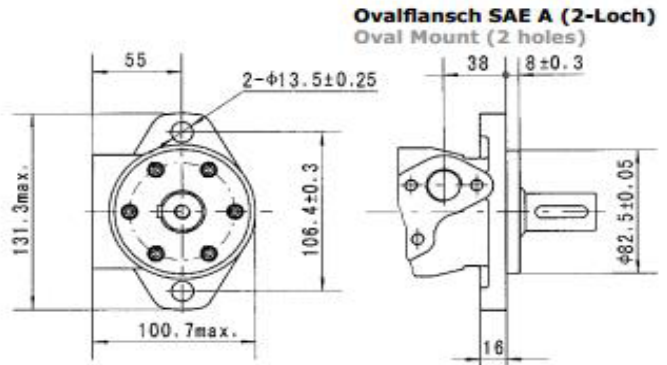
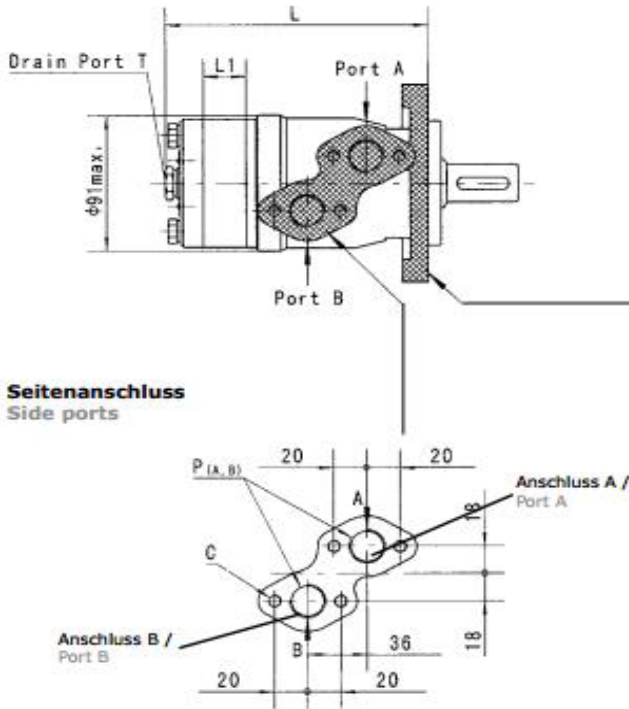


TYPE		CPM	CPM	CPM	CPM	CPM	CPM	CPM (1)	CPM (2)
		36	50	80	100	125	160	200	200
Displacement (cm ³ /rec)		36	51.7	77.7	96.2	117.2	155.5	189.9	189.9
Max. Speed (RPM)	Cont.	1500	1180	760	600	485	380	302	302
	Int.(1)	1650	1380	940	750	600	475	380	380
Max. Torque (daNm)	Cont.	5.5	9.3	14.9	19	23.4	31	36.4	35.9
	Int.(1)	7.6	12	19	23	29	37	45.2	43.5
	peak	9.6	14	21.9	26.5	36.2	42.6	54.5	54.5
Max. Output Power (kW)	Cont.	8	10.2	10.1	10.3	10	10	10	9.6
	Int.(1)	11.5	12.3	12.3	12.5	12	12	12	12
Max. Pressure Drop (bar)	Cont.	125	140	140	140	140	140	140	135
	Int.(1)	165	175	175	175	175	175	175	160
	peak	225	210	210	210	210	210	210	210
Max. Oil flow (l/min)	Cont.	55	60	60	60	60	60	60	60
	Int.(1)	60	60	75	75	75	75	75	75
Max. Input Pressure (bar)	Cont.	160	160	160	160	160	160	160	160
	Int.(1)	175	175	175	175	175	175	175	175
	peak	210	210	210	210	210	210	210	210
Weight (kg)		5.6	5.7	5.7	5.9	6	6.2	6.4	6.4



TYPE		CPM (1)	CPM (2)	CPM (1)	CPM (2)	CPM (1)	CPM (2)	CPM (1)	CPM (2)
		250	250	315	315	400	400	500	500
Displacement (cm ³ /rec)		231	231	311.7	311.7	386.2	311.7	386.2	386.2
Max. Speed (RPM)	Cont.	240	240	190	190	150	150	120	120
	Int.	302	302	235	235	190	190	150	150
Max. Torque (daNm)	Cont.	45.2	35.1	46.3	34.2	48.2	34.8	43	38.5
	Int.	58.9	46.8	54.3	49.2	55.5	45.4	56	56
	peak	64.2	58.5	70.5	68.4	78.7	68.8	78	68
Max. Output Power (kW)	Cont.	9.4	7.4	7.5	5.6	6.3	4.6	6	5
	Int.	12	12	9	9	7.8	7.8	7	6
Max. Pressure Drop (bar)	Cont.	135	105	115	80	90	65	70	60
	Int.	175	140	135	115	110	90	90	90
	peak	200	175	175	160	160	140	130	120
Max. Oil flow (l/min)	Cont.	60	60	60	60	60	60	60	60
	Int.	75	75	75	75	75	75	75	75
Max. Input Pressure (bar)	Cont.	160	160	160	160	160	160	160	160
	Int.	175	175	175	175	175	175	175	175
	peak	210	210	210	210	210	210	210	210
Weight (kg)		6.6	6.6	6.9	6.9	7.4	7.4	8	8

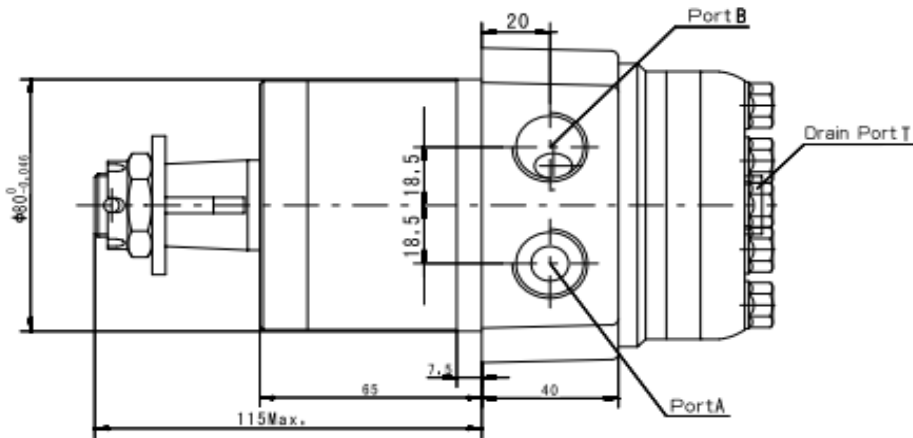
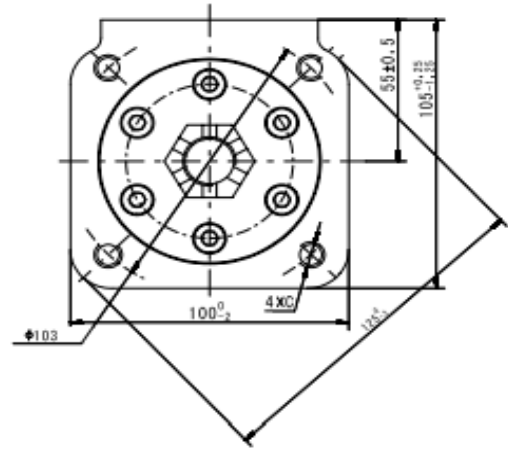
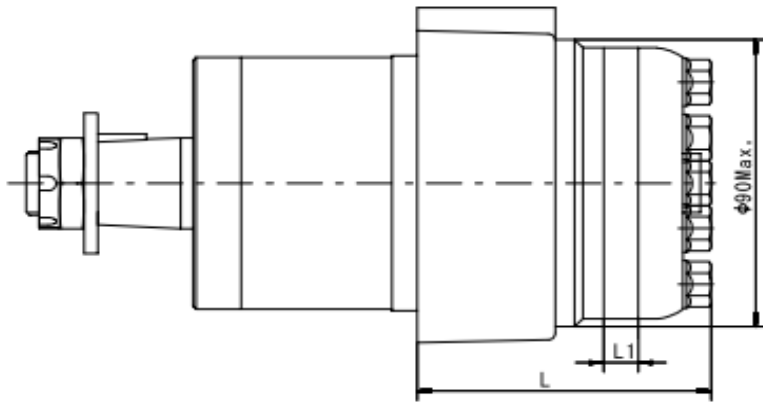




Port	Versions			
	Leer	M	S	P
P (A,B)	G 1/2 "	M22 x 1,5	7/8-14 O-Ring	1/2-14 NPTF
T	G 1/4 "	M14 x 1,5	7/16-20 UNF	7/16-20 UNF
C	M8	M8	5/16-18 UNC	5/16-18 UNC

Type	L	L1	Type	L	L1
CPM (F) 36	137	7	CPMQ 36	143	7
CPM (F) 50	137	7	CPMQ 50	143	7
CPM (F) 80	140.5	10.5	CPMQ 80	146.5	10.5
CPM (F) 100	143	13	CPMQ 100	149	13
CPM (F) 125	146	16	CPMQ 125	152	16
CPM (F) 160	151	21	CPMQ 160	157	21
CPM (F) 200	157	26	CPMQ 200	163	26
CPM (F) 250	162	32	CPMQ 250	168	32
CPM (F) 315	172	42	CPMQ 315	178	42
CPM (F) 400	182	52	CPMQ 400	188	52
CPM (F) 500	195	65	CPMQ 500	201	65

W Radmontage
Wheel Mounting

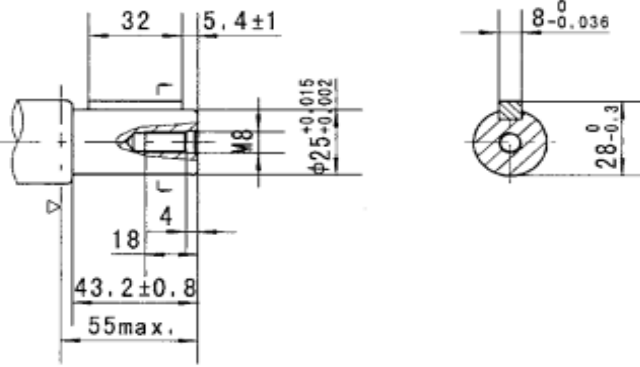


Port	Versions			
	Leer	M	S	P
P (A,B)	G 1/2 "	M22 x 1,5	7/8-14 O-Ring	1/2-14 NPTF
T	G 1/4 "	M14 x 1,5	7/16-20 UNF	7/16-20 UNF

Type	L	L1
CPMW 50	81	7
CPMW 80	84.5	10.5
CPMW 100	87	13
CPMW 125	90	16
CPMW 160	95	21
CPMW 200	100	26
CPMW 250	106	32
CPMW 315	116	42
CPMW 400	126	52

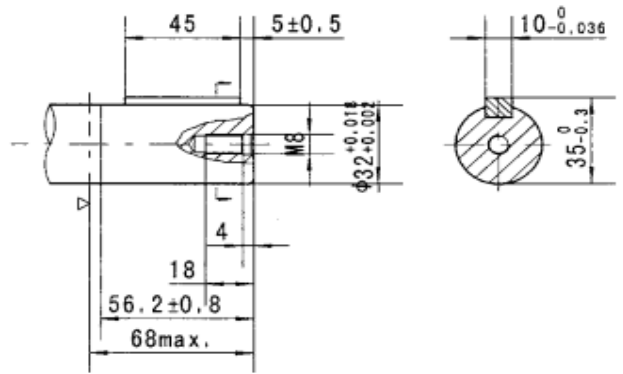
C Q 25 mm straight , parallel key A8x7x32 .

Max. Torque : 34 daNm



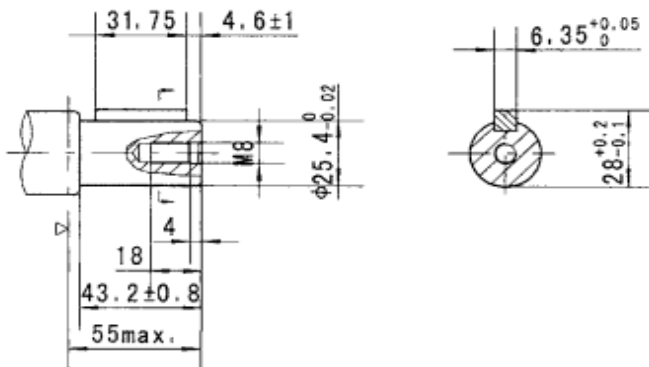
CB Q 32 mm straight , parallel key A10x8x45 .

Max. Torque : 77 daNm



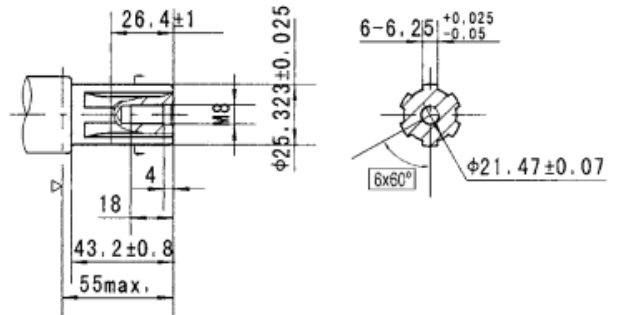
CO Q 25.4 mm (1") straight , parallel key 1/4"x1/4"x1 1/4"

Max. Torque : 34 daNm



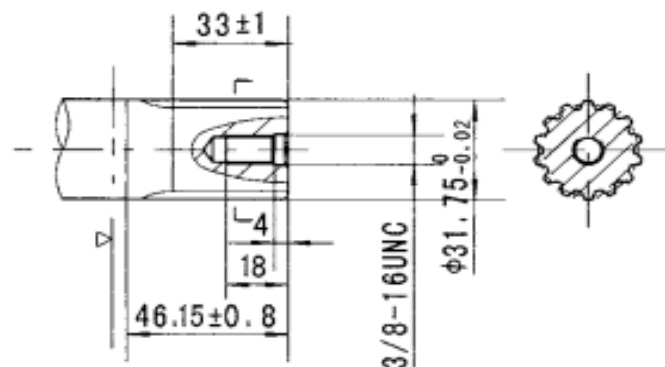
SH Splined (SAE 6B) .

Max. Torque : 40 daNm



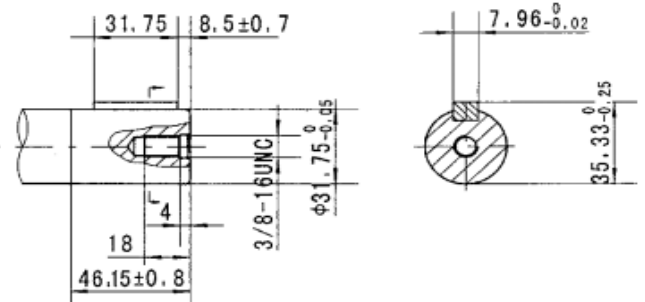
SB Q 31.75 Splined 14 T , DP 12/24.

Max. Torque : 77 daNm



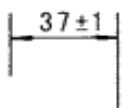
C1 Q 1 1/4" straight , parallel key 5/16"x5/16"x1 1/4"

Max. Torque : 77 daNm



S Q 31.75 (1 1/4") Splined 14 T , DP 12/24.

Max. Torque : 77 daNm



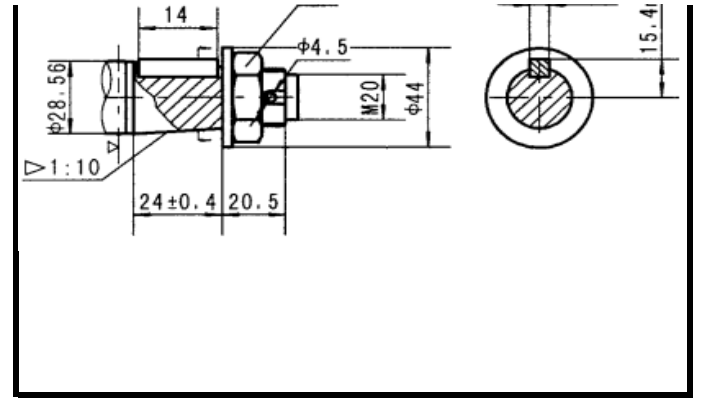
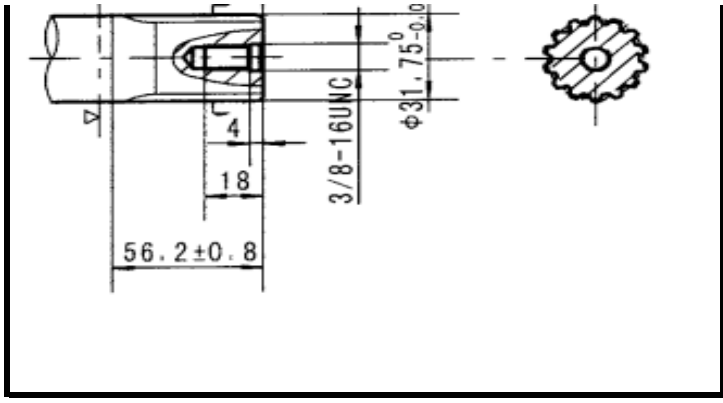
225

K conical 1:10 , parallel key 85x5x14

Max. Torque : 40 daNm

S30

5.0 ± 0.03 max.

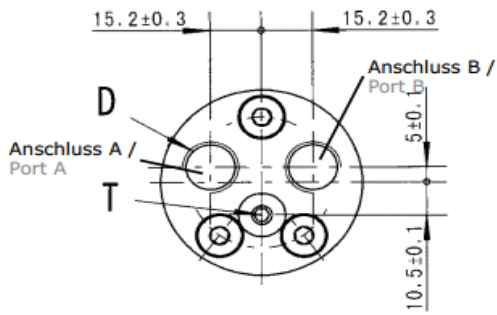


TYPE		CPMM	CPMM	CPMM	CPMM	CPMM	CPMM
		8	12.5	20	32	40	50
Displacement (cm ³ /rec)		8.2	12.9	19.9	31.6	39.8	50.3
Max. Speed (RPM)	Cont.	1950	1550	1000	630	500	400
	Int.(1)	2450	1940	1250	800	630	500
Max. Torque (daNm)	Cont.	1.1	1.6	2.5	4.0	4.5	4.6
	Int.(1)	1.5	2.3	3.5	5.7	7.0	8.5
	peak	2.1	3.3	5.1	6.4	8.2	10
Max. Output Power (kW)	Cont.	1.8	2.4	2.4	2.4	2.2	1.8
	Int.(1)	2.6	3.2	3.2	3.2	3.2	3.2
Max. Pressure Drop (bar)	Cont.	100	100	100	100	90	70
	Int.(1)	140	140	140	140	140	140
	peak	200	200	200	160	160	160
Max. Oil flow (l/min)	Cont.	16	20	20	20	20	20
	Int.(1)	20	25	25	25	25	25
Max. Input Pressure (bar)	Cont.	175	175	175	175	175	175
	Int.(1)	225	225	225	225	225	225
Weight (kg)		1.9	2	2.1	2.2	2.3	2.4

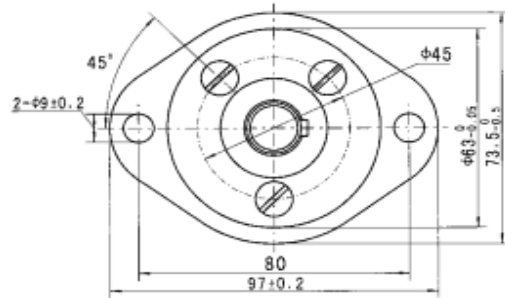
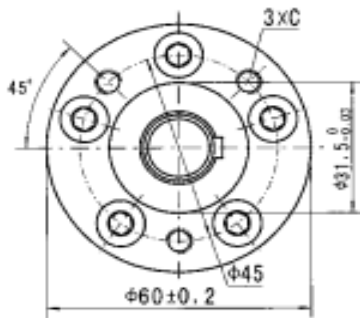
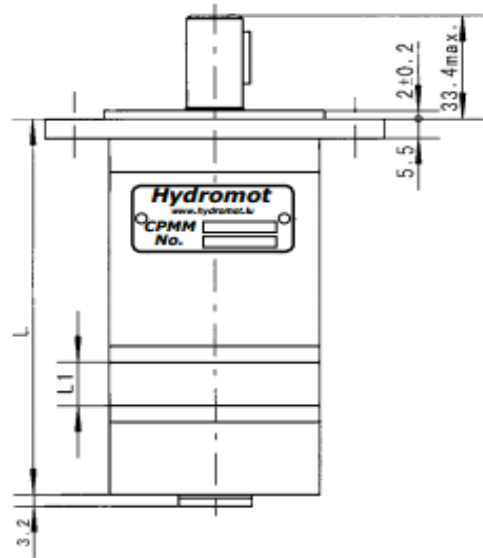
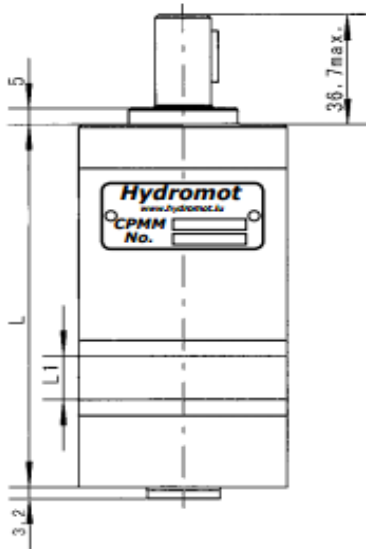
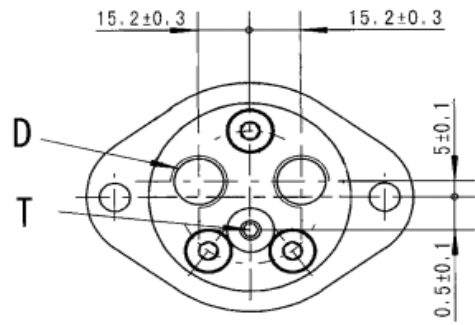


DIMENSIONS
PORTING and MOUNTING

Rear Ports



Oval Mount 2 Holes



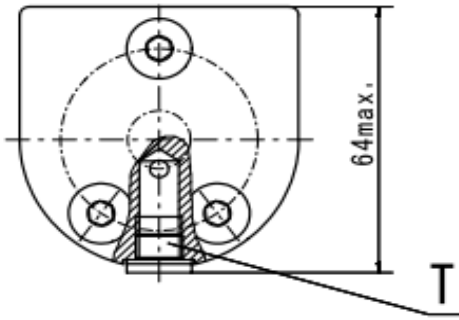
Type	L	L1
CPMM 8	104	3.5
CPMM 12.5	106	5.5
CPMM 20	109	8.5
CPMM 32	114	13.5
CPMM 40	117.5	17
CPMM 50	122	21.5

Port	Versions	
	Omit	U
D(A,B)	G 3/8"	9/16-18 UNF
T	G 1/8"	3/8-24 UNF
C	M6	1/4-28 UNF-2B

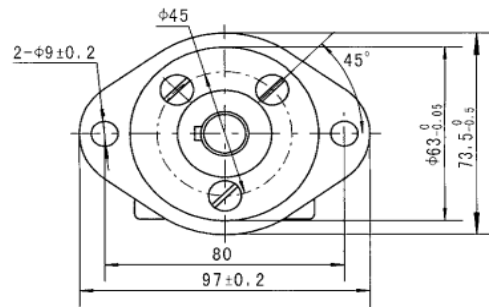
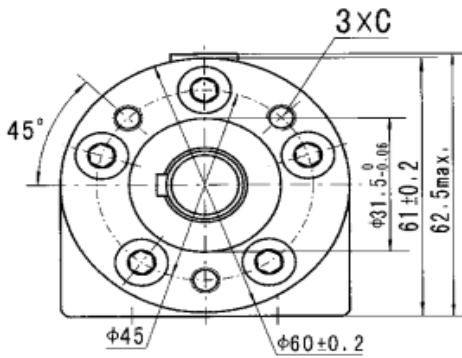
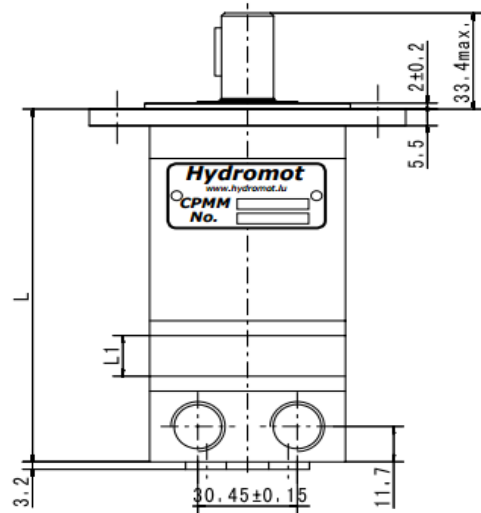
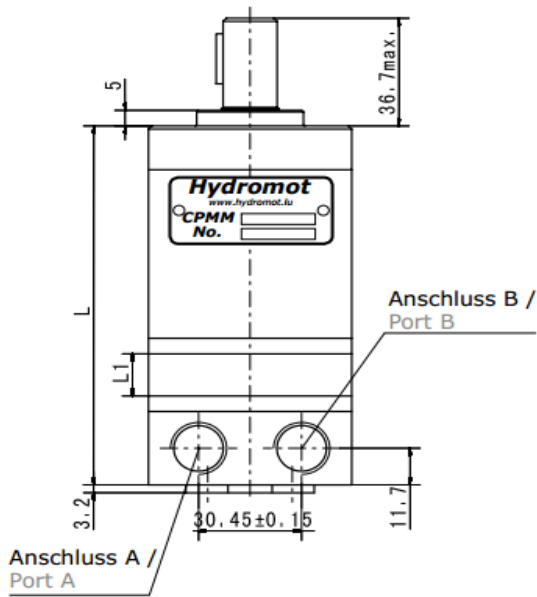
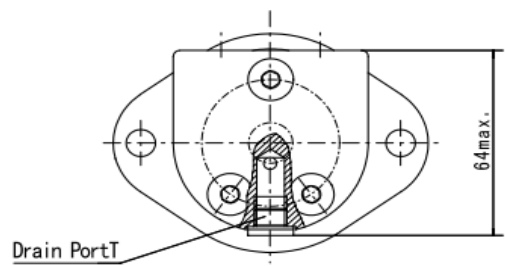
Type	L	L1
CPMMF 8	107.5	3.5
CPMMF 12.5	109.5	5.5
CPMMF 20	112.5	8.5
CPMMF 32	117.5	13.5
CPMMF 40	121	17
CPMMF 50	125.5	21.5

DIMENSIONS
PORTING and MOUNTING

Side Ports



Oval Mount 2 Holes



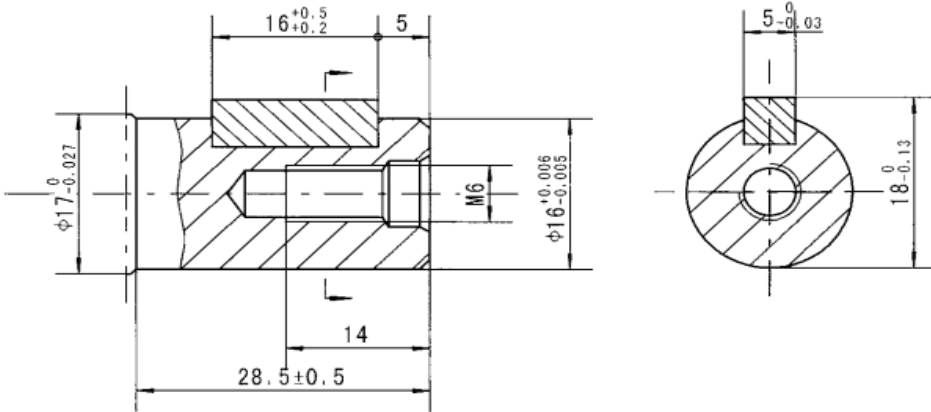
Type	L	L1
CPMMS 8	105	3.5
CPMMS 12.5	107	5.5
CPMMS 20	110	8.5
CPMMS 32	115	13.5
CPMMS 40	118.5	17
CPMMS 50	123	21.5

Port	Versions	
	Omit	U
D(A,B)	G 3/8"	9/16-18 UNF
T	G 1/8"	3/8-24 UNF
C	M6	1/4-28 UNF-2B

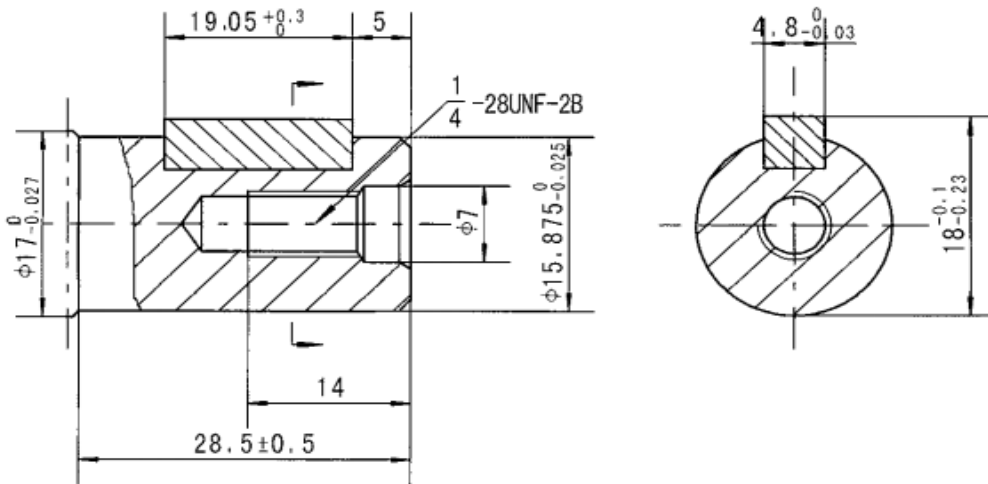
Type	L	L1
CPMMFS 8	108.5	3.5
CPMMFS 12.5	110.5	5.5
CPMMFS 20	113.5	8.5
CPMMFS 32	118.5	13.5
CPMMFS 40	122	17
CPMMFS 50	126.5	21.5

OUTPUT SHAFT

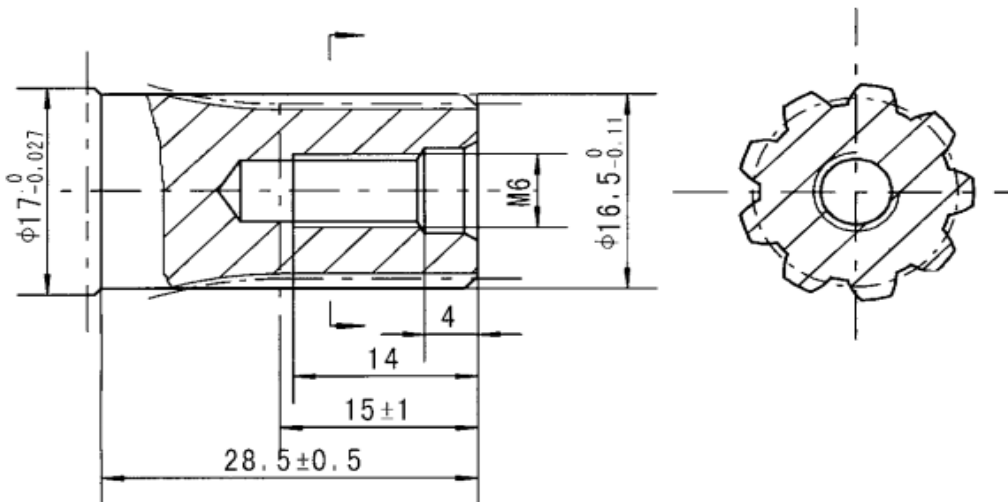
C - 16mm Straight , parallel key 5x5x16 . Max. Torque: 3.9 daNm



CO - 15.8 mm (5/8") straight , parallel key 3/16" x 3/16" x 3/4" Max torque: 3.9 daNm

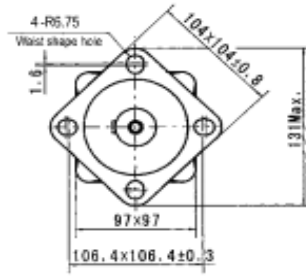


SH - 16.5 mm splined , B17 x 14 Max. Torque: 4.4 daNm

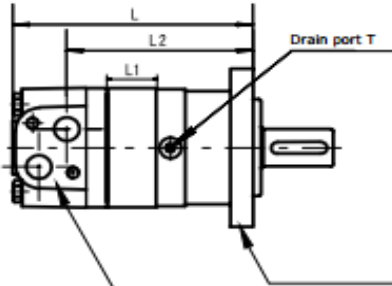
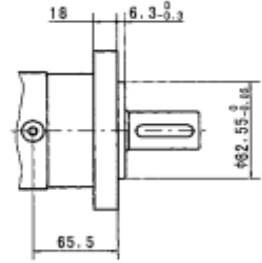


TYPE		CPMS	CPMS	CPMS	CPMS	CPMS	CPMS	CPMS	CPMS	CPMS
		80	100	125	160	200	250	315	400	475
Displacement (cm ³ /rec)		80.6	100.8	125	154	194	243	311	394	475
Max. Speed (RPM)	Cont.	800	748	600	470	375	300	240	185	155
	Int.	988	900	720	560	450	360	280	225	185
Max. Torque (daNm)	Cont.	22.5	29	36.5	48.5	58.6	70.8	88	88	91
	Int.	25	32	40	54	64.5	80.6	96	96	96
Max. Output Power (kW)	Cont.	16	18	18	18.1	18.1	18	17	11	9
	Int.	20	22	23	25	24	23.8	20.2	12	11
Max. Pressure Drop (bar)	Cont.	205	205	205	210	210	200	200	160	140
	Int.	225	225	225	225	225	225	225	175	150
	peak	295	295	295	225	225	225	225	200	175
Max. Oil flow (l/min)	Cont.	65	75	75	75	75	75	75	75	75
	Int.	80	90	90	90	90	90	90	90	90
Max. Input Pressure (bar)	Cont.	250	250	250	250	250	250	250	250	250
	Int.	300	300	300	300	300	300	300	300	300
Weight (kg)		9.8	10	10.3	10.7	11	11.6	12.33	13.2	14.3

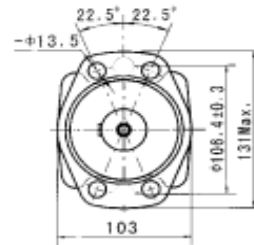
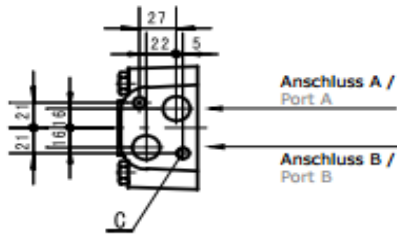




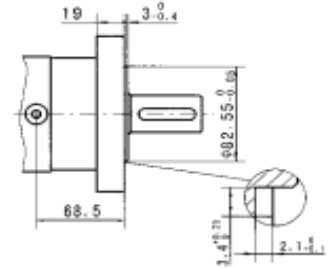
Quadratflansch SAE A
Square flange SAE A



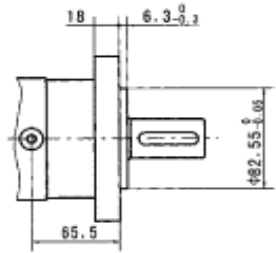
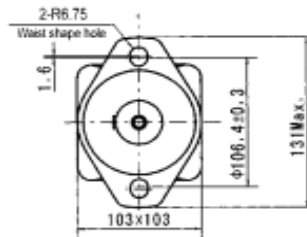
Seitenanschluss
Side ports



F - Magneto Flansch (4-Loch)
Magneto Mount (4 holes)



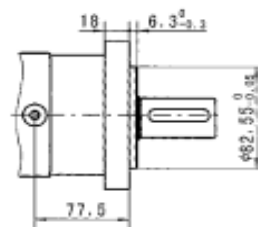
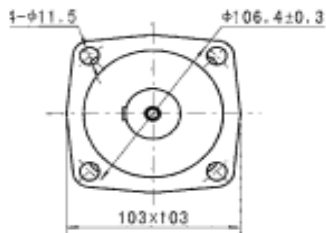
A - Ovalflansch SAE A (2-Loch)
Oval Mount SAE A (2 holes)



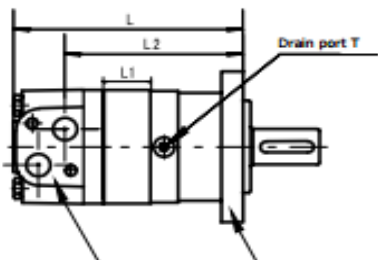
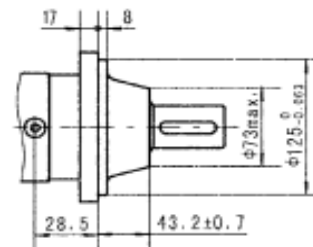
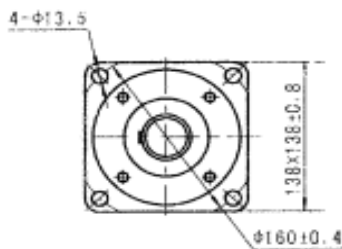
Port	Versions		
	Leer	M	S
P (A,B)	G 1/2 "	M22 x 1,5	7/8-14 O-Ring
T	G 1/4 "	M14 x 1,5	7/16-20 UNF
C	M10	M10	5/16-18 UNC

Type	L	L1	L2
CPMS (F) 80	170	16	126.5
CPMS (F) 100	174	20	130.5
CPMS (F) 125	179	25	135.5
CPMS (F) 160	181	27	137.5
CPMS (F) 200	188	34	144.5
CPMS (F) 250	196	42	152.5
CPMS (F) 315	208	54	164.5
CPMS (F) 400	223	69	179.5
CPMS (F) 475	237	83	193.5

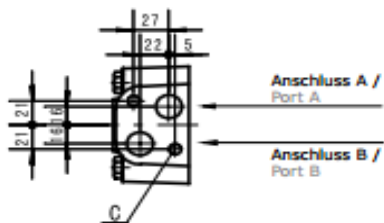
Q - Quadratflansch (4 Schrauben)
Square flange (4 bolts)



W - Radflansch
Wheel flange



Seitenanschluss
Side ports

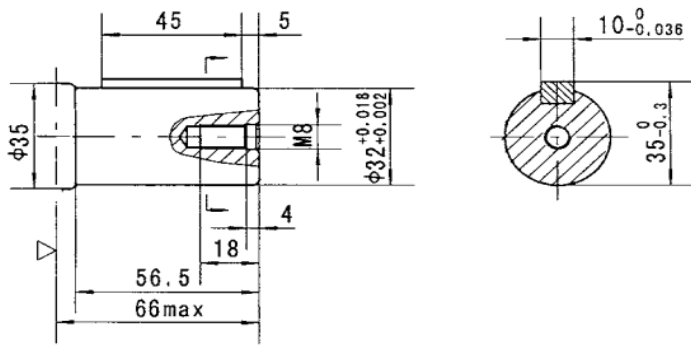


Port	Versions		
	Leer	M	S
P (A,B)	G 1/2 "	M22 x 1,5	7/8-14 O-Ring
T	G 1/4 "	M14 x 1,5	7/16-20 UNF
C	M10	M10	5/16-18 UNC

Type	L	L1	L2	Type	L	L1	L2
CPMSQ 80	182	16	138.5	CPMSW 80	132.5	16	89
CPMSQ 100	186	20	142.5	CPMSW 100	136.5	20	93
CPMSQ 125	191	25	147.5	CPMSW 125	141.5	25	98
CPMSQ 160	193	27	149.5	CPMSW 160	143.5	27	100
CPMSQ 200	200	34	156.5	CPMSW 200	150.5	34	107
CPMSQ 250	208	42	164.5	CPMSW 250	158.5	42	115
CPMSQ 315	220	54	176.5	CPMSW 315	170.5	54	127
CPMSQ 400	235	69	191.5	CPMSW 400	185.5	69	142
CPMSQ 475	249	83	205.5	CPMSW 475	199.5	83	156

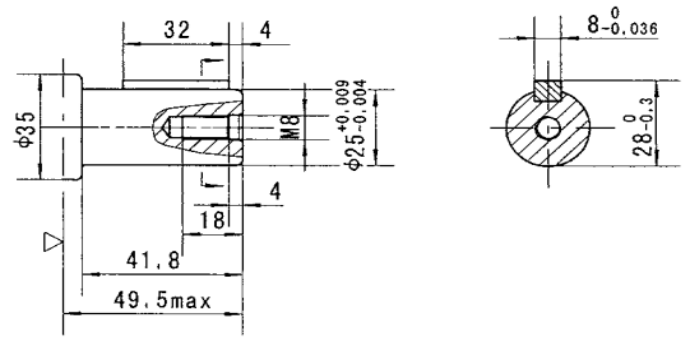
C Q 32 mm straight , parallel key A10x8x45 .

Max. Torque : 77 daNm



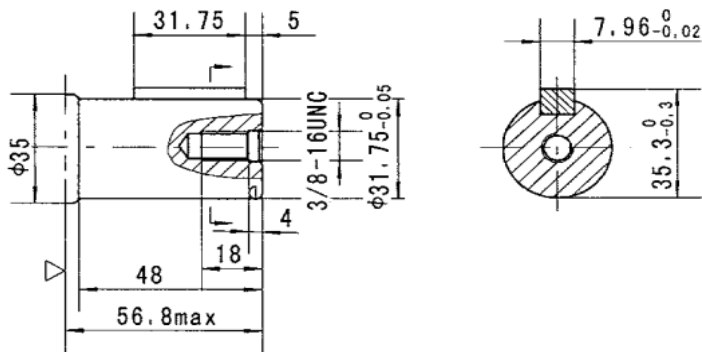
C25 Q 25 mm straight , parallel key A8x7x32 .

Max. Torque : 34 daNm



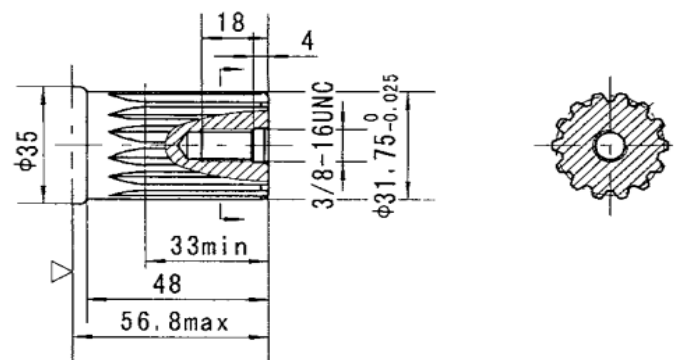
CO Q 31.75 mm (1 1/4") straight , parallel key 5/16"x5/16"x1

Max. Torque : 77 daNm



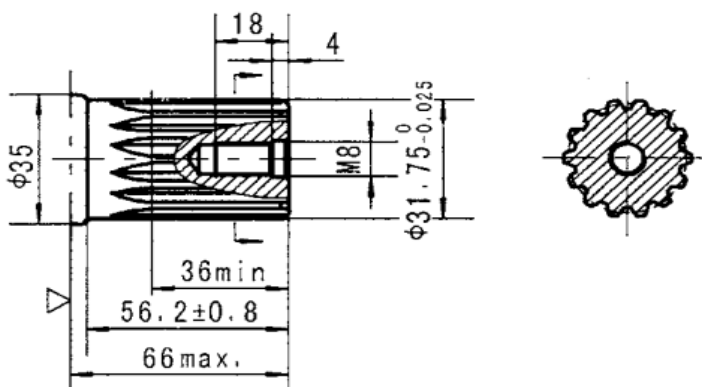
SB Q 1 1/4" Splined, 14T , ANSI B92.1-1976

Max. Torque : 77 daNm



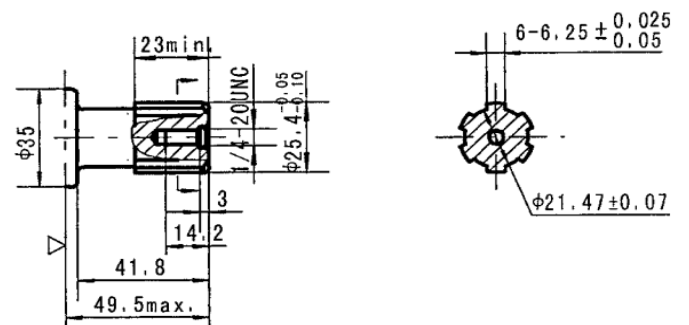
SH Q 31.75 (1 1/4") Splined 14 T , DP 12/24.

Max. Torque : 95 daNm



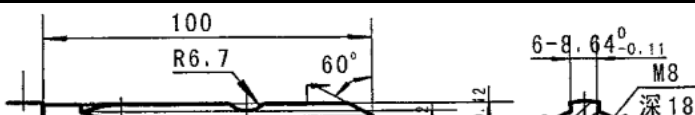
SH Splined (SAE 6B) .

Max. Torque : 34 daNm



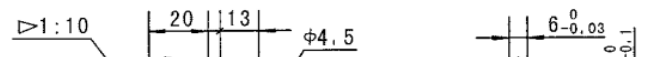
SL Q 34.75 P.T.O DIN 9611 Form 1;

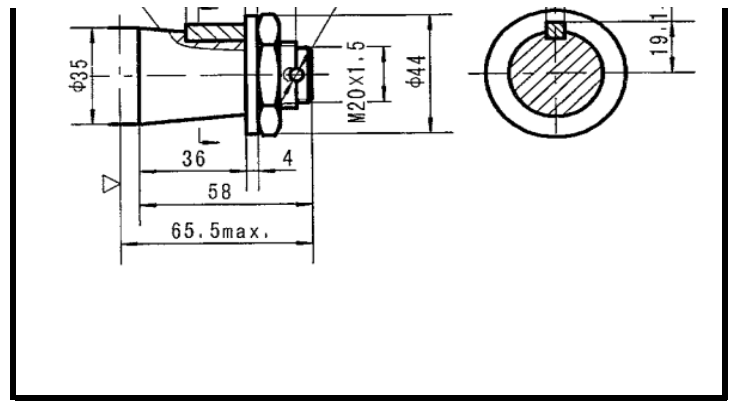
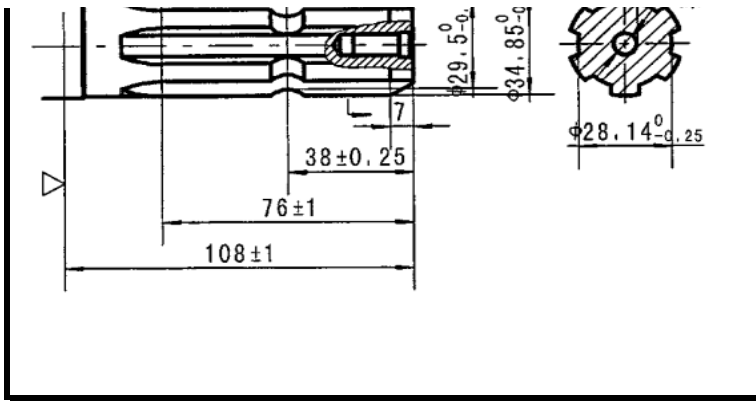
Max. Torque : 77 daNm



K conical 1:10 , parallel key B6x6x20

Max. Torque : 95 daNm

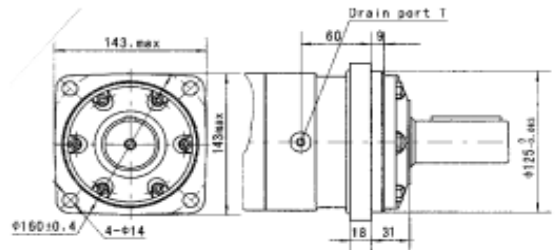




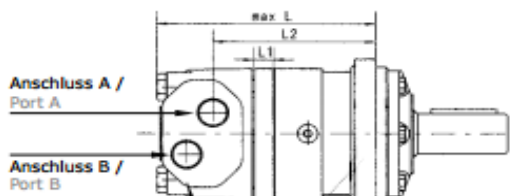
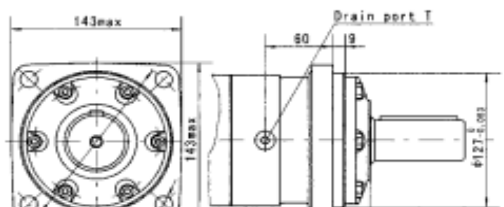
TYPE		CPMT	CPMT	CPMT	CPMT	CPMT	CPMT	CPMT	CPMT
		160	200	250	315	400	500	630	800
Displacement (cm ³ /rec)		161.1	201.4	251.8	326.3	410.9	523.6	629.1	801.8
Max. Speed (RPM)	Cont.	625	625	500	380	305	240	196	154
	Int.(1)	780	750	600	460	365	285	233	185
Max. Torque (daNm)	Cont.	47	59	73	95	108	122	131.8	146.4
	Int.(1)	56	71	88	114	126	137	149.8	152
	peak	66.9	83.8	103.6	134.6	145	164.4	161.9	166.5
Max. Output Power (kW)	Cont.	27.7	34.9	34.5	34.9	31.2	28.8	25.3	22.2
	Int.(1)	32	40	40	40	35	35	27.5	26.8
Max. Pressure Drop (bar)	Cont.	200	200	200	200	180	160	140	12.5
	Int.(1)	240	240	240	240	210	180	160	130
	peak	280	280	280	280	240	210	190	160
Max. Oil flow (l/min)	Cont.	100	125	125	125	125	125	125	125
	Int.(1)	125	150	150	150	150	150	150	150
Max. Input Pressure (bar)	Cont.	210	210	210	210	210	210	210	210
	Int.(1)	250	250	250	250	250	250	250	250
	peak	300	300	300	300	300	300	300	300
Weight (kg)		19.5	20	20.5	21	22	23	24	25



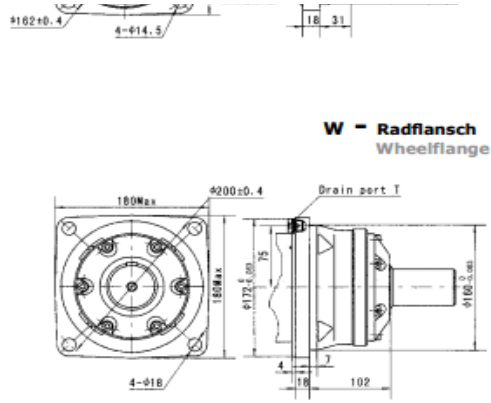
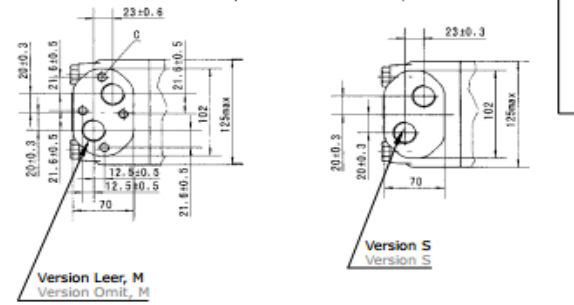
Quadratflansch (4-Loch)
Square flange (4holes)



C - SAE C Flansch (4-Loch)
SAE C flange (4 holes)



Seitenanschluss
Side ports



Port	Versions		
	Leer	M	S
P (A,B)	G 3/4 "	M27 x 2	1 1/16"-12UN
T	G 1/4 "	M14 x 1,5	9/16"-18 UNF
C	M10	M10	-

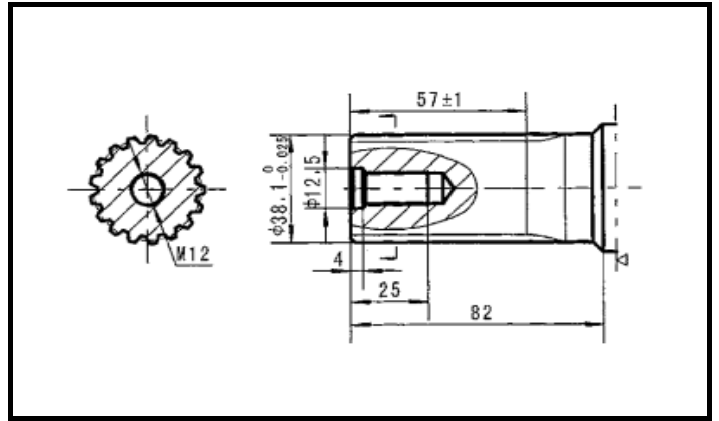
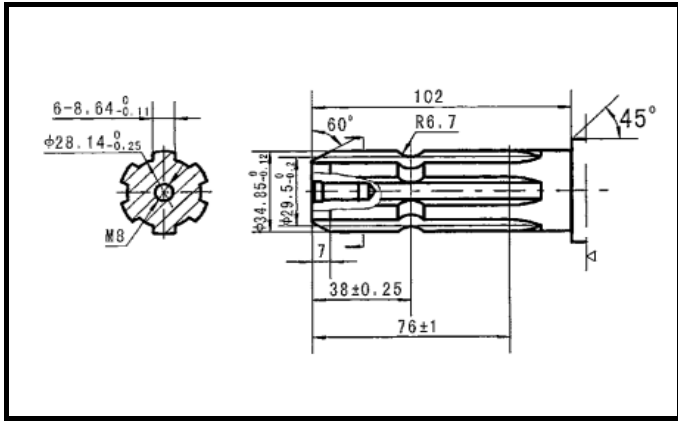
Type	L	L1	L2	Type	L	L1	L2
CPMT 160	193	17	142.5	CPMTW 160	127	17	77
CPMT 200	197	21	146.5	CPMTW 200	131	21	81
CPMT 250	204	14	152.5	CPMTW 250	136	14	86
CPMT 315	210	20	158.5	CPMTW 315	142	20	91
CPMT 400	217	27	165.5	CPMTW 400	148	27	98
CPMT 500	225	35	173.5	CPMTW 500	157	35	106
CPMT 630	237	47	175.5	CPMTW 630	169	47	118
CPMT 800	248	58	196.5	CPMTW 800	180	58	129

C Ø 40 mm straight , parallel key A12x8x70 (DIN 6885) .
Max. Torque : 132.8 daNm

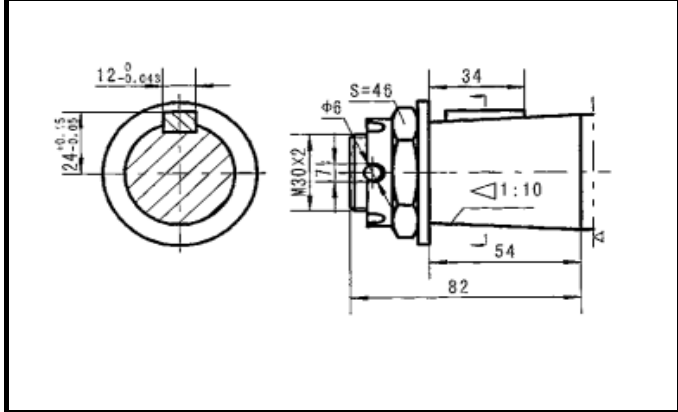
CO Ø 38.1 mm (1 1/2") straight , parallel key 3/8" 3/8"x 2 1/4" BS46
Max. Torque : 132.8 daNm

SL Ø 34.85 P.T.O DIN 9611 Form 1;
Max. Torque : 77 daNm

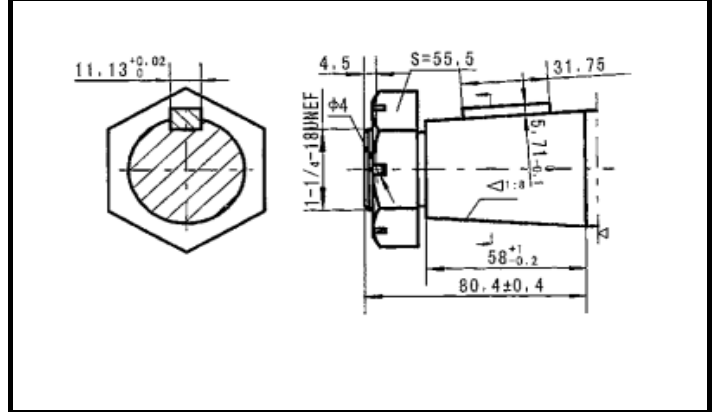
SH Ø 1 1/2 , splined, 17T, DP 12/24, ANSI B92.1-1976.
Max. Torque : 132.8 daNm



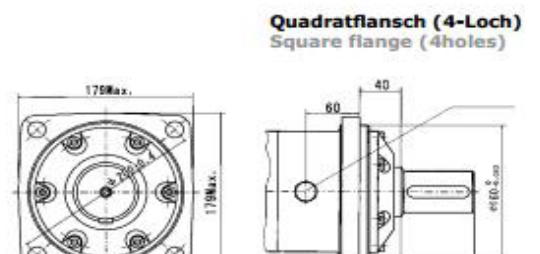
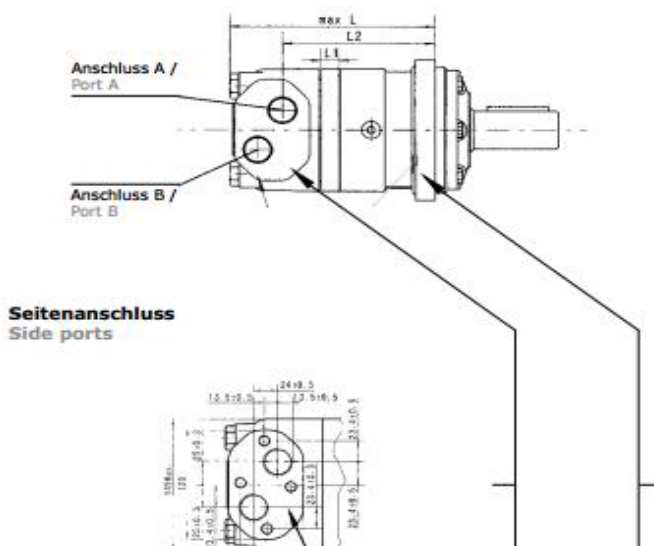
K conical 1:10 , parallel key B12x8x28 DIN 6885.
Max. Torque : 210.7 daNm

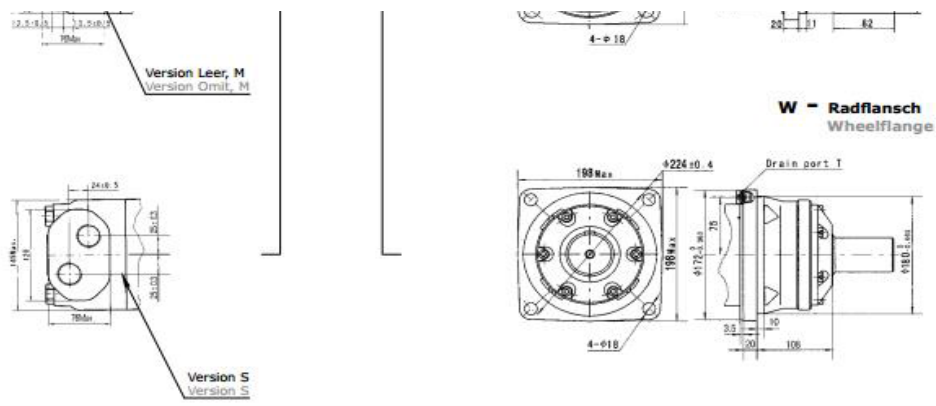


KA conical 1:8 , parallel key B11.13x11.13x31.75 DIN 6885
Max. Torque : 210.7 daNm



TYPE		CPMV	CPMV	CPMV	CPMV	CPMV	CPMV
		315	400	500	630	800	1000
Displacement (cm ³ /rec)		333	419	518	666	801	990
Max. Speed (RPM)	Cont.	510	500	400	320	250	200
	Int.(1)	630	600	480	380	300	240
Max. Torque (daNm)	Cont.	92	118	146	166	188	201.5
	Int.(1)	111	141	176	194	211	228
	peak	129	164	205	221	247	240
Max. Output Power (kW)	Cont.	38.0	47.0	47.0	40.0	33.0	28.6
	Int.(1)	46.0	56.0	56.0	56.0	44.0	40.0
Max. Pressure Drop (bar)	Cont.	200	200	200	180	160	140
	Int.(1)	240	240	240	210	180	160
	peak	280	280	280	240	210	180
Max. Oil flow (l/min)	Cont.	160	200	200	200	200	200
	Int.(1)	200	240	240	240	240	240
Max. Input Pressure (bar)	Cont.	210	210	210	210	210	210
	Int.(1)	250	250	250	250	250	250
	peak	300	300	300	300	300	300
Weight (kg)		31.8	32.6	33.5	34.9	36.5	38.6

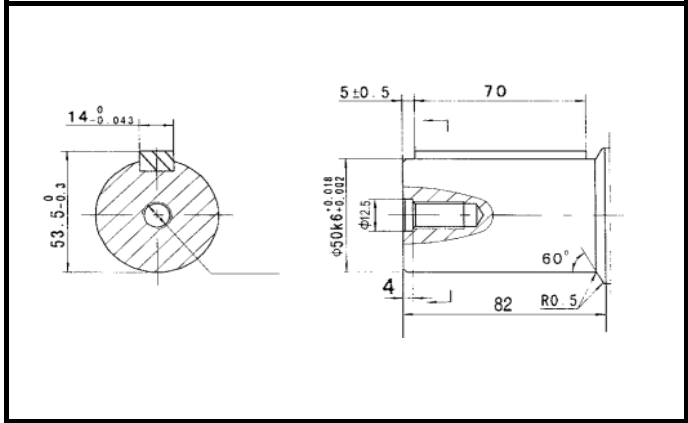




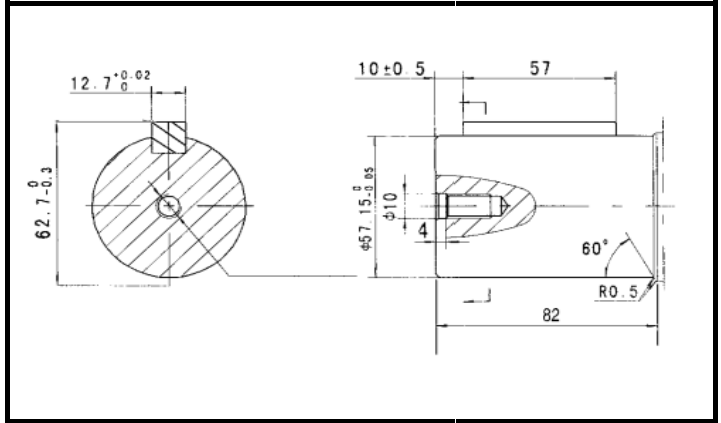
Port	Versions		
	Leer	M	S
P (A,B)	G 1"	M233x 2	1 5/16"-12UN
T	G 1/4"	M14 x 1,5	9/16-18 UNF
C	M12	M12	-

Type	L	L1	L2	Type	L	L1	L2
CPMV 315	217	20	161.5	CPMVW 315	148.5	20	93.5
CPMV 400	224	27	168.5	CPMVW 400	155.5	27	100.5
CPMV 500	232	35	176.5	CPMVW 500	163.5	35	108.5
CPMV 630	244	47	188.5	CPMVW 630	175.5	47	120.5
CPMV 800	255	58	199.5	CPMVW 800	186.5	58	131.5
CPMV 1000	271	74	215.5	CPMVW 1000	202.5	74	147.5

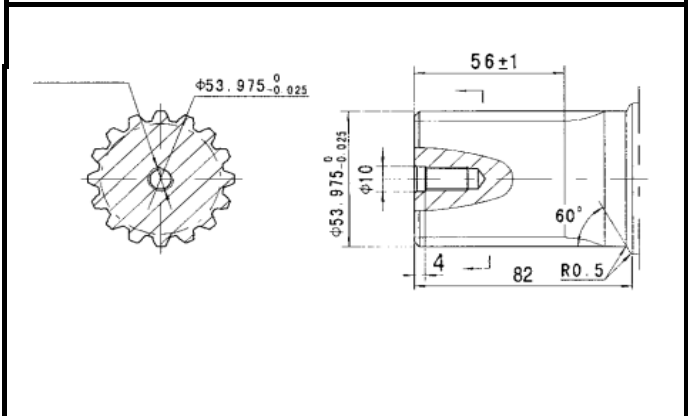
C \varnothing 50 mm straight , parallel key A14x9x70 (DIN 6885) .



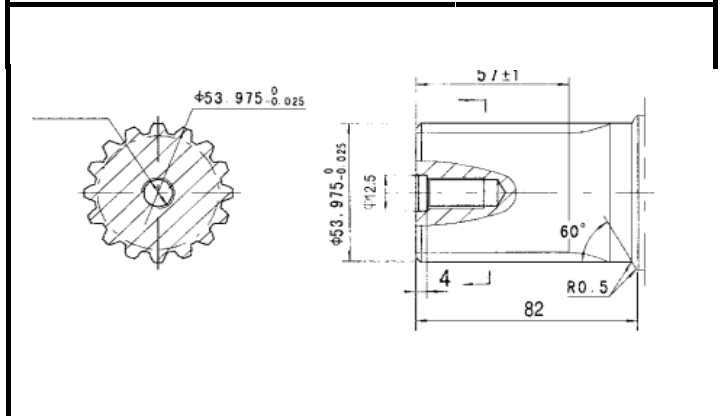
CO \varnothing 57.15 mm (2 1/4") straight , parallel key 1/2" 1/2" x 2 1/4" BS46



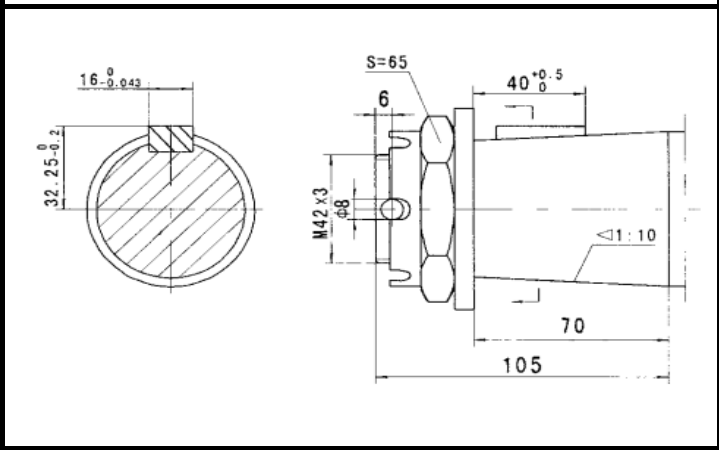
SB \varnothing 53.975 mm, splined 16T,DP 8/16



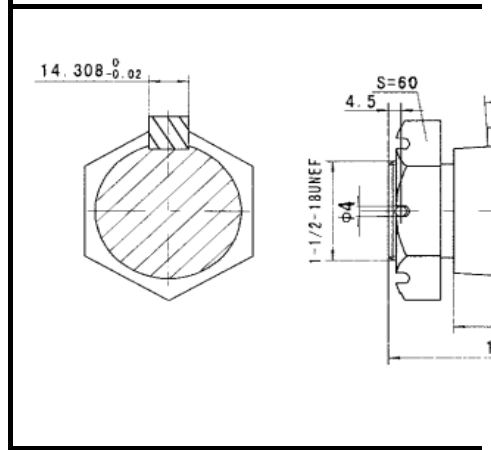
SH \varnothing 2 1/8", splined, 16T, DP 8/16, ANSI B92.1-1976.



K conical 1:10 , parallel key B16x10x32 DIN 6885.



KA conical 1:8 , parallel key B14.308x14.308x



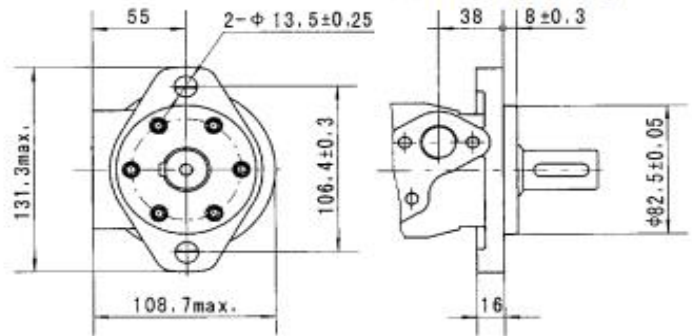
TYPE		CPRM (1)	CPRM (2)	CPRM	CPRM	CPRM	CPRM	CPRM (1)	CPRM (2)
		36	36	50	80	100	125	160	160
Displacement (cm ³ /rec)		36	36	51.7	81.5	102	127.2	157.2	157.2
Max. Speed (RPM)	Cont.	1250	1085	960	750	600	475	378	378
	Int.(3)	1520	1220	1150	940	750	600	475	475
Max. Torque (daNm)	Cont.	7.2	7.2	10	19.5	24	30	38	36
	Int.(3)	8.3	8.3	12.6	22	28	34	43	43
	peak (4)	10.5	10.5	16.5	27	32	37	46	46
Max. Output Power (kW)	Cont.	8.5	8.5	9.5	12.5	13	12.5	12.5	12.5
	Int.(3)	9.8	9.8	11.2	15	15	14.5	14	14
Max. Pressure Drop (bar)	Cont.	140	140	140	140	140	140	140	140
	Int.(3)	165	165	175	20	20	20	20	20
	peak (4)	225	225	225	22.5	22.5	22.5	22.5	22.5
Max. Oil flow (l/min)	Cont.	45	40	50	60	60	60	60	60
	Int.(3)	55	45	60	75	75	75	75	75
Max. Input Pressure (bar)	Cont.	175	175	175	175	175	175	175	175
	Int.(3)	200	200	200	200	200	200	200	200
	peak (4)	225	225	225	225	225	225	225	225
Weight (kg)		6.7	6.5	6.7	6.9	7	7.3	7.6	7.6



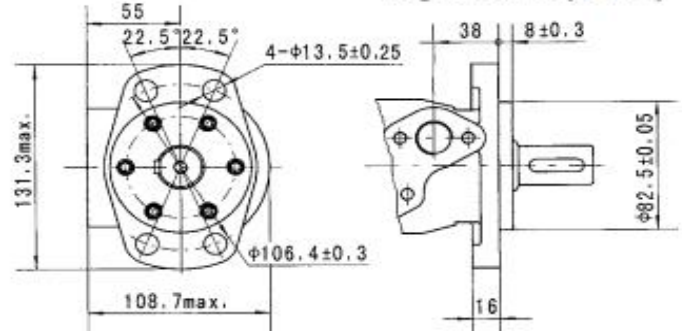
TYPE		CPRM (1)	CPRM (2)	CPRM (1)	CPRM (2)	CPRM (1)	CPRM (2)	CPRM (1)	CPRM (2)
		200	200	250	250	315	315	400	400
Displacement (cm ³ /rec)		194.5	194.5	253.3	253.3	317.5	317.5	381.4	381.4
Max. Speed (RPM)	Cont.	310	310	240	240	190	190	155	155
	Int.(3)	385	385	300	300	240	240	190	190
Max. Torque (daNm)	Cont.	45	36	54	39	55	39	58	36.5
	Int.(3)	50	44	61	49	69	53.5	69	49.5
	peak (4)	56	56	71	64	84	65	83	68
Max. Output Power (kW)	Cont.	11	10	10	7	9	6	7.5	5
	Int.(3)	13	13	12	9.5	10	9	9	8
Max. Pressure Drop (bar)	Cont.	140	130	140	110	135	90	115	70
	Int.(3)	200	175	200	150	175	130	150	100
	peak (4)	225	225	225	200	210	175	175	150
Max. Oil flow (l/min)	Cont.	60	60	60	60	60	60	60	60
	Int.(3)	75	75	75	75	75	75	75	75
Max. Input Pressure (bar)	Cont.	175	175	175	175	175	175	175	175
	Int.(3)	200	200	200	200	200	200	200	200
	peak (4)	225	225	225	225	225	225	225	225
Weight (kg)		8	8	8.5	8.5	9	9	9.5	9.5



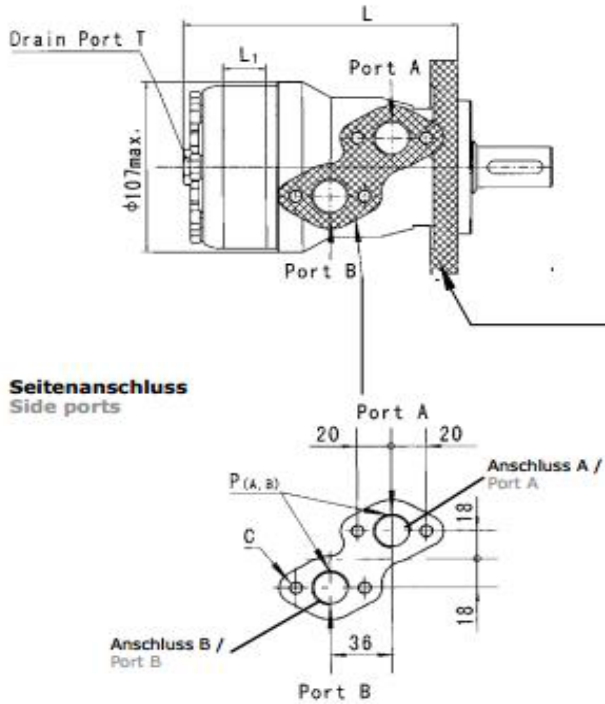
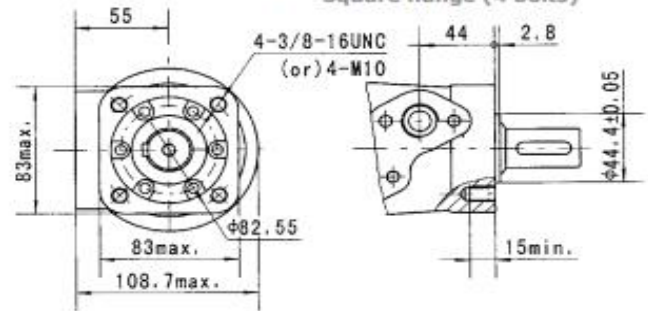
Ovalflansch SAE A (2-Loch)
Oval Mount (2 holes)



F - Magneto Flansch (4-Loch)
Magneto Mount (4 holes)



Q - Quadratflansch (4 Schrauben)
Square flange (4 bolts)



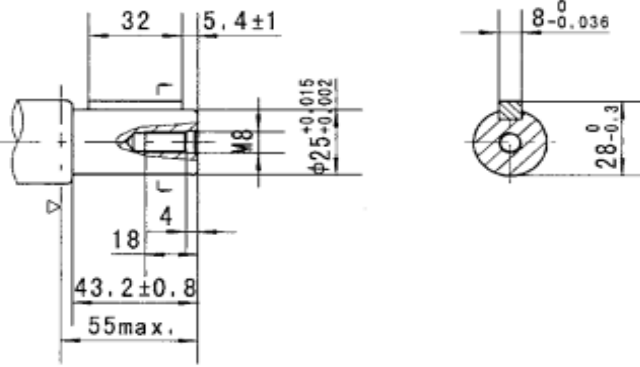
Seitenanschluss
Side ports

Port	Versions			
	Leer	M	S	P
P (A,B)	G 1/2 "	M22 x 1,5	7/8-14 O-Ring	1/2-14 NPTF
T	G 1/4 "	M14 x 1,5	7/16-20 UNF	7/16-20 UNF
C	M8	M8	5/16-18 UNC	5/16-18 UNC

Type	L	L1	Type	L	L1
CPRM (F) 36	137	7	CPRMQ 36	143	7
CPRM (F) 50	140	10	CPRMQ 50	146	10
CPRM (F) 80	146	16	CPRMQ 80	152	16
CPRM (F) 100	150	20	CPRMQ 100	156	20
CPRM (F) 125	155	25	CPRMQ 125	161	25
CPRM (F) 160	161.5	30.5	CPRMQ 160	167.5	30.5
CPRM (F) 200	170	38.1	CPRMQ 200	176	38.1
CPRM (F) 250	180	50	CPRMQ 250	186	50
CPRM (F) 315	192	62	CPRMQ 315	198	62
CPRM (F) 400	204	74	CPRMQ 400	210	74

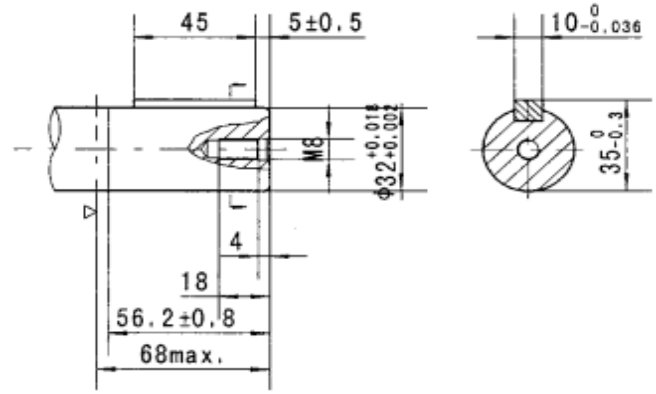
C Q 25 mm straight , parallel key A8x7x32 .

Max. Torque : 34 daNm



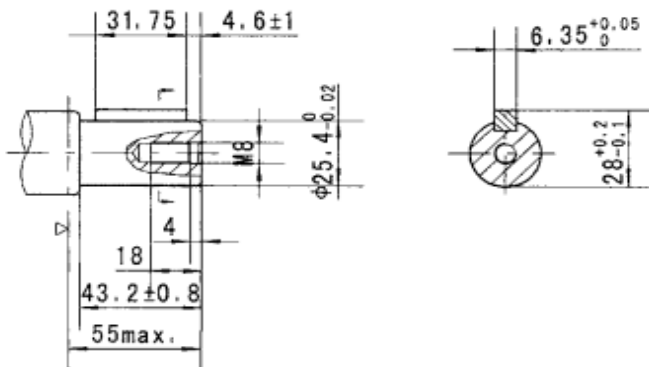
CB Q 32 mm straight , parallel key A10x8x45 .

Max. Torque : 77 daNm



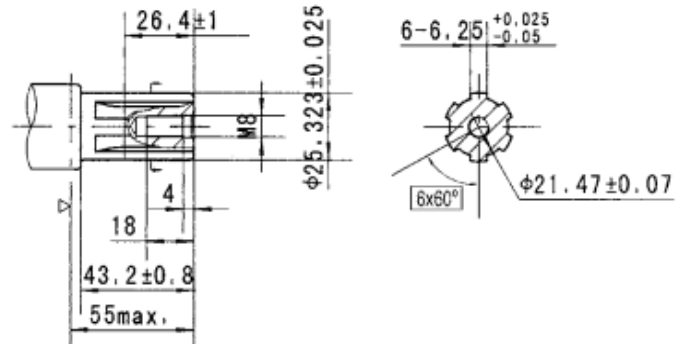
CO Q 25.4 mm (1") straight , parallel key 1/4"x1/4"x1 1/4"

Max. Torque : 34 daNm



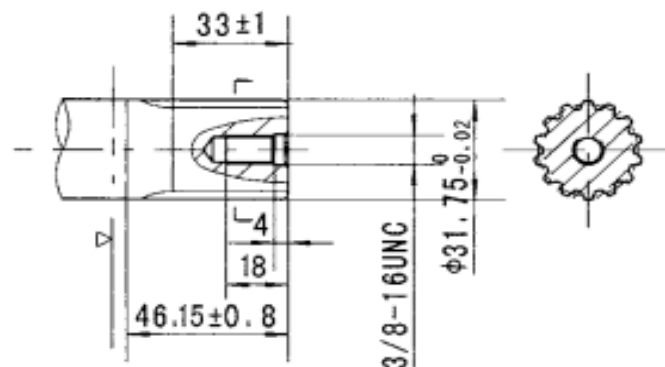
SH Splined (SAE 6B) .

Max. Torque : 40 daNm



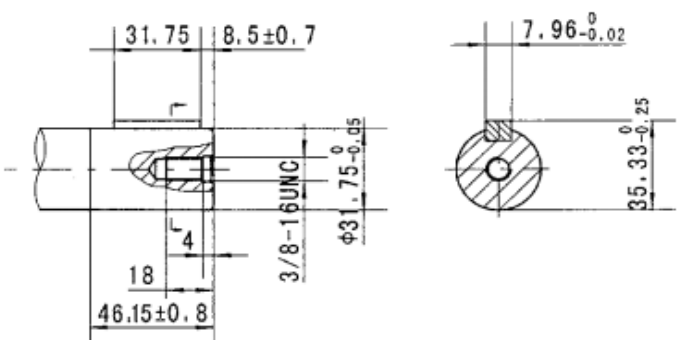
SB Q 31.75 Splined 14 T , DP 12/24.

Max. Torque : 77 daNm



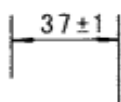
C1 Q 1 1/4" straight , parallel key 5/16"x5/16"x1 1/4"

Max. Torque : 77 daNm



S Q 31.75 (1 1/4") Splined 14 T , DP 12/24.

Max. Torque : 77 daNm



K conical 1:10 , parallel key 85x5x14

Max. Torque : 40 daNm

