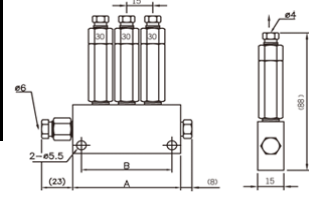
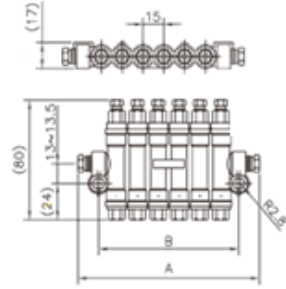
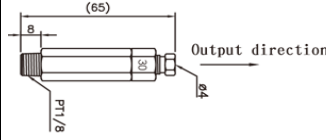


Model	No.of out.bores	A	B	Out. Vol.cc/str.	Fiyat USD.-
DX-200	2	47	37	0,06	
DX-300	3	62	52	0,10	
DX-400	4	77	67	0,16	
DX-500	5	92	82		
DX-600	6	107	97	0,20	
DX-700	7	122	112	0,30	
DX-800	8	137	127	0,40	
DX-900	9	152	142	0,50	

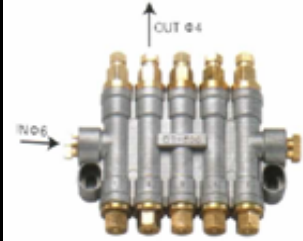


Model	Out.Vol. cc./stroke	Mark	Fiyat USD.-
DX-000-02	0,02	2	
DX-000-06	0,06	6	
DX-000-10	0,1	10	
DX-000-16	0,16	16	
DX-000-20	0,2	20	
DX-000-30	0,3	30	
DX-000-40	0,4	40	
DX-000-50	0,5	50	



DT Seri Dozajlı dağıtıcılar

Model	No.of output bores	A	B	Out. Volume (cc/stroke)	Fiyat USD.-
DT-200	2	75	39 - 43	0,10 0,16 0,20 0,30 0,40 0,50	
DT-300	3	90	54 - 58		
DT-400	4	105	69 - 73		
DT-500	5	120	84 - 88		
DT-600	6	135	99-103		



DG Seri Soft Grease (NLGI 0,00) Dozajlı dağıtıcılar

Model	No.of output bores	A	B	Output Volume (cc/stroke)	Fiyat USD.-
DG-200	2	75	39 - 43	0.3 0.4 0.5	
DG-300	3	90	54 - 58		
DG-400	4	105	69 - 73		
DG-500	5	120	84 - 88		
DG-600	6	135	99-103		

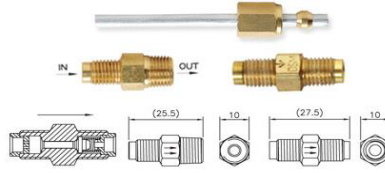


DQ Seri compact Dozajlı dağıtıcılar

Model	No.of output bores	Output Vol.(cc/stroke)	Fiyat USD.-	
DQ-100	1	0.10, 0.20, 0.30		
DQ-200	2		0.40, 0.50	
DQ-300	3			
DQ-400	4			
DQ-500	5			
DQ-600	6	0.10, 0.20, 0.30		
DQ-700	7		0.40, 0.50	
DQ-800	8			
DQ-900	9			
DQ-1000	10			
DQ-1100	11			
DQ-1200	12			



DQ-1000

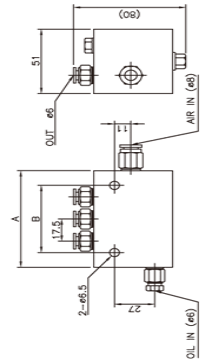


Proportion Devices Nipples (Oransal dağıtıcı Nipeller) for Resistance System

	Meter Unit	Control Unit	Simple Unit	Fiyat USD.-
IN	M8X1.0	M8X1.0	M8X1.0	
OUT	M8X1.0	PT1/8	M8X1.0	
Flow rate	DPB	DPS	DPV	
1	DPB-1	DPS-1	DPV-1	
2	DPB-2	DPS-2	DPV-2	
3	DPB-3	DPS-3	DPV-3	
4	DPB-4	DPS-4	DPV-4	
5	DPB-5	DPS-5	DPV-5	

SD Spray Mist Distributor (Air-Oil)

Model	No.of output bores	A	B	Output Vol. (cc/stroke)	Fiyat USD.-
SD-1	1	41,5	18	0,1 0,16	
SD-2	2	59	35,5	0,2 0,3	
SD-3	3	76,5	53	0,4 0,5	
SD-4	4	94	70,5		
SD-5	5	111,5	88		



MODEL	YCM-01	YCM-02	YCM-03
Output Bore	Internal Thread PSI/4 (with Universal Nozzle)		
Input Air Pres. Mpa (kgf / cm <sup>2</sup> )	0,4 (4)		
Connector Type	Quick Connector (Male Type)		
Input Air Switch	O	O	O
Pressure Gauge	O	O	O
Stand	-----	Magnetic Stand	Uni.Hyd.Magnetic Stand

Fiyat USD.-	YCM-01	YCM-02	YCM-03

Test Result		
Rate of Cool Wind	%	50
Inlet Temperature (30°C)	Pres. Mpa (kgf / cm <sup>2</sup> )	0,44 (4,4)
	Air Volume (L/min)	149
Outlet	Air Volume (L/min)	88
	Temperature (°C)	-25
Inlet / Outlet	Dif. Temperature (°C)	55
Hot Air	Temperature (°C)	51,7
Quantity of Heat	kcal/H	66

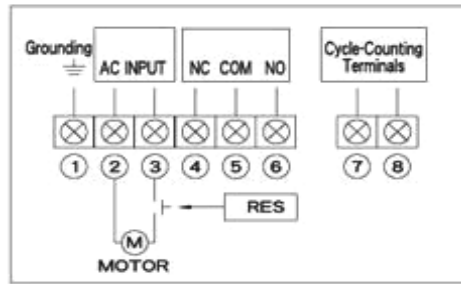


**YET-A2 MICROCOMPUTER PISTON & RESIST LUBRICATOR**

Model	YET-A2		YET -A2P2		YET-A1		YET -A1P1	
System	Piston		Piston		Resistance		Resistance	
Voltage (Single Phase)	110V & 220V		110V & 220V		110V & 220V		110V & 220V	
Power (W)	100		100		100		100	
Output Power	11		11		11		11	
Capacity of output (A)	3		3		3		3	
Lubrication time (second/minute)	1-999		1-999		1-999		1-999	
Intermittent time (second/ hour/ cycle)	1-999		1-999		1-999		1-999	
Output bore	Q4 & Q6		Q4 & Q6		Q4 & Q6		Q4 & Q6	
Max. Output pressure MPA (kgf/cm2)	1.5 (15)		1.5 (15)		0,7 (7)		0,7 (7)	
Output volume (cc/min)	150		150		200		200	
Pressure release device	O		O		X		X	
Float switch	O		O		O		O	
Pressure switch (kgf/cm2)	X		12--9		X		2,5 - 1,9	
Pressure gauge	O		O		O		O	
Alarm beeper	O		O		O		O	
Tank capacity (LT)	2 lt. Plast.	3lt.Plast	2lt.Plast.	3lt.Plast	2lt.plast	3lt Plast	4lt.Pls.tank	4lt.Alum.Tank
<b>Fiyat USD.-</b>								



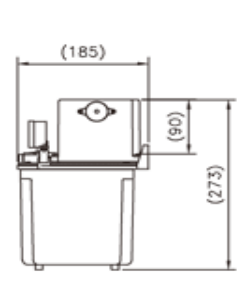
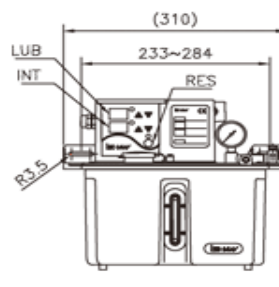
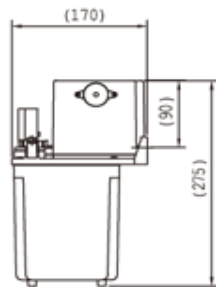
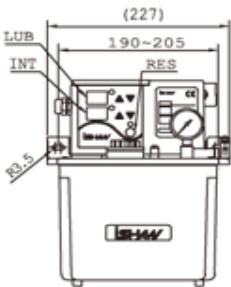
**YET-A2-3LT PLAST.TANK**



**YET-A2 WIRING DIAGRAM**



**YET-A2-4LT ALUM.TANK**



MODEL / PRES.SW 321660 12-9 bar

**Fiyat USD.:**



YET-B2/B2P2 & YET-C2/C2P2 AUTOMATIC PISTON LUB. & YET-C2P3

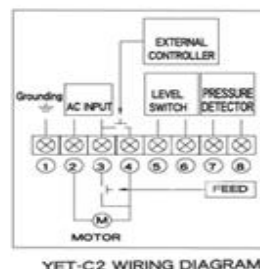
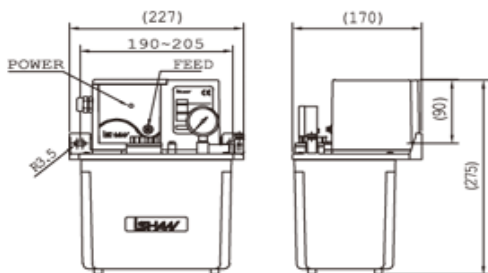
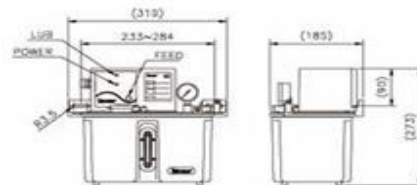
Model	YET-B2	YET-B2P2	YET-C2	YET-C2P2	YET-C2P3 (Özel)	YET-C1	YET-C1P1
System	Resist.	Piston	Piston	Piston	Piston	Resist.	Resist.
Voltage (single phase)	110V or 220V		110V or 220V		220V	110V or 220V	
Power (W)	100W		100W			80W	
Output Power (W)			11			8	
Capacity of output (A)	0.3A (Float switch) 3A (Pressure switch)		0.3A (Float switch) 3A (Pressure switch)			0.3A (Float switch) 3A (Pressure switch)	
Lubricating time (Yağlama zamanı)	PLC control sys.		PLC control sys.		Coop. PLC cont.	PLC control system	
Intermittent time (Bekleme zamanı)							
Output bore	Q4 or Q6		Q4 or Q6		Q6	Q4 or Q6	
Max. Out. pres. Mpa (kgf/cm2)	1.5 (15 bar)		1.5 (15 bar)		15 bar	0.5 (5 bar)	
Output volume (cc/min)	150		150		150	200	
Pressure release device	O	O	O	O	O	X	X
Pressure switch (kgf/cm2)	X	12-9	X	12-9	12-9	X	2.5 - 1.9
Float switch	O	O	O	O	O	O	O
Alarm beeper	X	X	X (Option)	X (Option)	Alarm beep	X	X
Tank capacity	2lt.Plst.	3lt.Plst.	3lt.Plst.	2lt.Plst.	3lt.Plst.tank	4lt.Plst.Tank	4lt.Alum.Tank
Fiyat USD.-							



YET-C1 3LT PLAST.TANK



YET-C2/B2  
ALUM.TANK



YET-E & YET-N AUTOMATIC RESISTANCE LUB. (10 sec. Fixed Lub.)

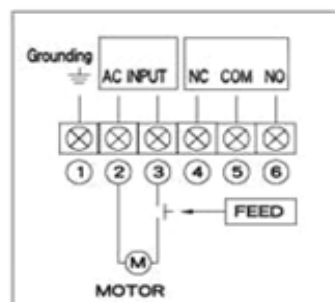
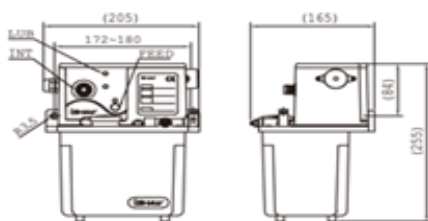
Model	YET-E (Act. 10sec.)		YET-N (Act. 10sec.)	
Voltage (single phase)	110V or 220V		110V or 220V	
Power	80W		80W	
Capacity of output	3A		3A	
Lubricating time (Second)	10 sec.		10 sec.	
Intermittent time (minute)	0-60		0-60	
Output bore	Q4 or Q6		Q4 or Q6	
Max. Output press. Mpa(kgf/cm <sup>2</sup> )	0.7 (7)		0.7 (7)	
Output volume (cc/min)	6 or 15 optional		6 or 15 optional	
Float switch	O		O	
Pressure gauge	X	O	O	O
Alarm beeper	X		O	
Reservoir capacity	2Lt.	3 Lt.	2 lt. & 4 Lt. Plast.	4 Lt.Alum.Tank



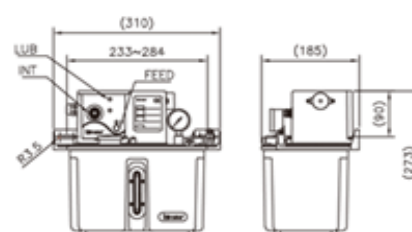
YET-N-2LT PLAST.TANK



YET-N-4LT ALUM.TANK



YET-E/N WIRING DIAGRAM

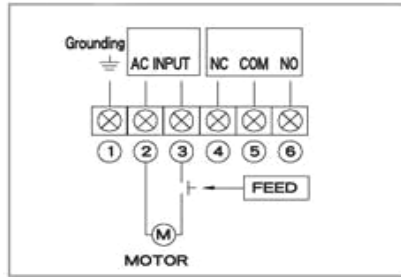


YET-R AUTOMATIC PISTON & RESIST LUB.

Model	YET-R2 (Piston Lub.)				YET-R1 (Resist Lub.)			
Distributor	DT- series & DX-series piston dist. ile kullanılır				CPV series dozaj enj.ile kullanılır			
Voltage (single phase)	110V & 220V				110V & 220V			
Power (W)	100W				80W			
Capacity of output (A)	3A				3A			
Lubricating time (Second)	1-180				1-180			
Intermittent time (minute)	1-180				1-180			
Output bore	Q4 or Q6				Q4 or Q6			
Max.press. Mpa (kgf/cm2)	1.5 (15)				0.5 (5)			
Output volume (cc/min)	150 cc/min.				200 cc/min.			
Pressure release device	O				O			
Float switch	O				O			
Pressure gauge	X	O	O	O	X	O	O	O
Alarm beeper	O				O			
Tank capacity (L)	2Lt.	3Lt.	4 Lt. Plast.Tank	4 Lt.Alum.Tank	2Lt.	3Lt.	4 Lt. Plst.Tank	4 Lt.Alum.Tank
Fiyat USD.-								



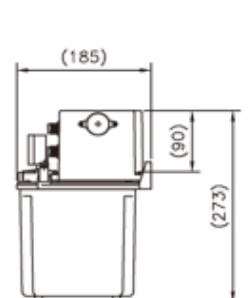
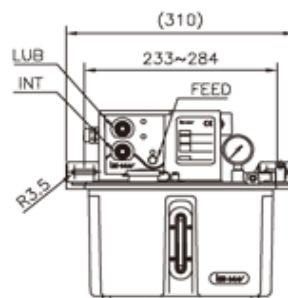
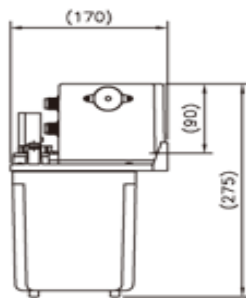
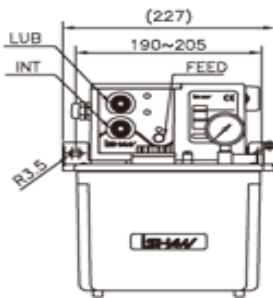
YET-R1-2LT PLAST.TANK



YET-R2 WIRING DIAGRAM



YET-R2-4LT ALUM.TANK



**YAK - YAE AUTOMATIC PISTON & RESIST LUB.**

Model	YAK		YAE	
System	Piston		Resistance	
Voltage (single phase)	110V or 220V		110V or 220V	
Power (W)	56W		56W	
Output Power	25W		25W	
Capacity of output (A)	3A		3A	
Lubricating time (second/minute)	1-999			
Intermittent time (hour/ cycle)				
Output bore	Q4 or Q6		Q4 or Q6	
Max. Output pressure (kgf/cm2)	2(20)		1(10)	
Output volume cc/min.	150 cc/min.		150 (Standard) 250 or 400 (Option)	
Pressure release device	O		X	
Pressure switch (kgf/cm2)	O		O	
Pressure gauge	O		O	
Float switch	O		O	
Alarm beeper	O		O	
Tank capacity (L)	3Lt.Plast.	4Lt.Alum. Tank	3Lt.Plast.Tank	4Lt.Alum.Tank
<b>Fiyat USD.-</b>				



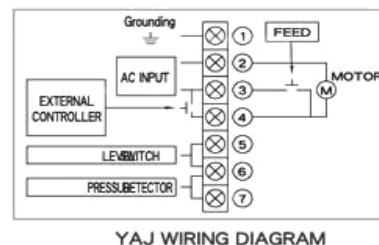
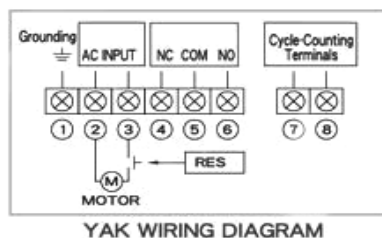
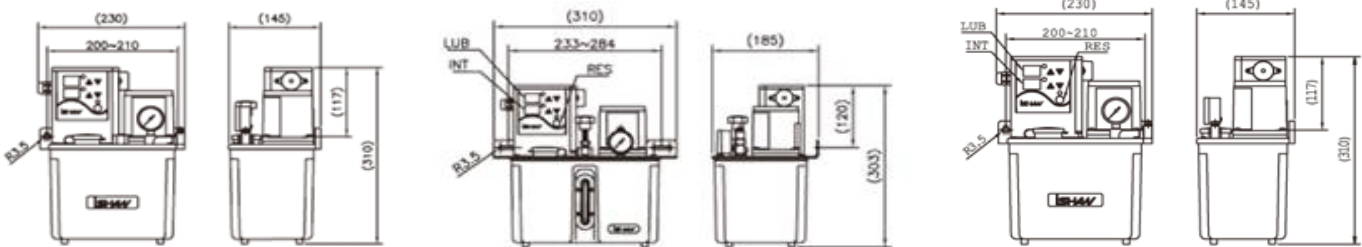
**YAK-3LT PLAST.TANK**



**YAK-4LT ALUM. TANK**



**YAE-3LT PLAST.TANK**



YAC - YAJ AUTOMATIC PISTON & RESIST LUB.

Model	YAJ		YAC	
System	Piston		Resistance	
Voltage (single phase)	110V or 220V		110V or 220V	
Power (W)	56W		56W	
Output Power	25W		25W	
Capacity of output (A)	0,3 (Float Switch) 3(Pressure switch)		0,3 (Float Switch)	
Lubricating time (second/minute)	Cooperate with PLC control system		Cooperate with PLC control system	
Intermittent time (hour/ cycle)	Cooperate with PLC control system		Cooperate with PLC control system	
Output bore	Q4 or Q6		Q4 or Q6	
Max. Output pressure (kgf/cm2)	2 (20)		1 (10)	
Output volume cc/min.	150 cc/min.		250 cc/min.(standard 400 cc/min Option)	
Pressure release device	O		X	
Pressure switch (kgf/cm2)	X (Optional)		X (Optional)	
Pressure gauge	O		O	
Float switch	O		O	
Alarm beeper	X		X	
Tank capacity (L)	3Lt.Plast.Tank	4Lt Metal Tank	3 lt. plast.tank	8Lt.Alum.tank
Fiyat USD.-				



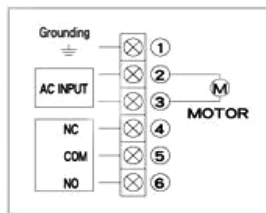
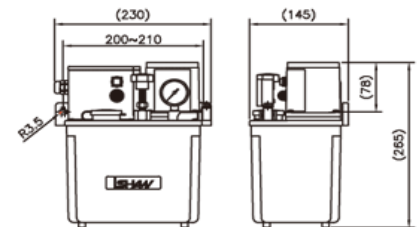
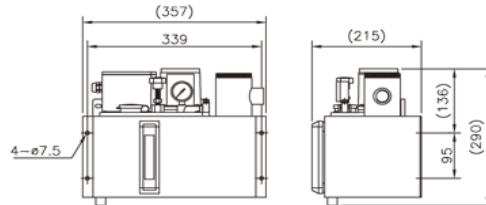
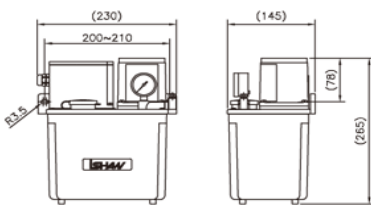
YAC-3LT PLAST.TANK



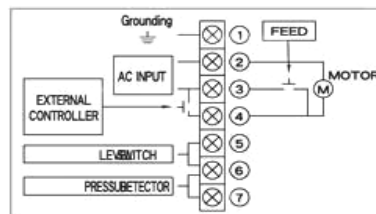
YAC-8LT ALUM. TANK



YAJ-3LT PLAST.TANK



YAC WIRING DIAGRAM

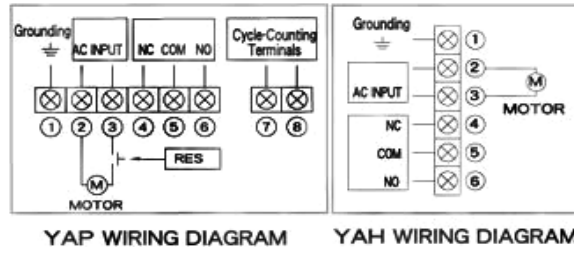


YAJ WIRING DIAGRAM



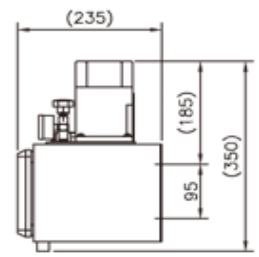
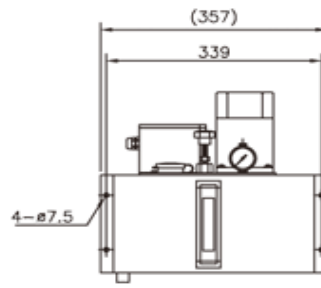
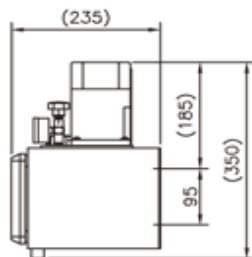
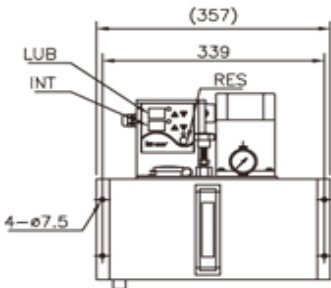
YAP & YAH (90W) AUTOMATIC RESISTANCE LUBRICATOR

Model	YAP	YAH
System	Resistance	Resistance
Voltage (single phase)	110V or 220V	110V or 220V
Power (W)	164W	164W
Output Power	90W	90W
Capacity of output	3	0.3A (Float switch) 3A (Pressure switch)
Lubricating time (Yağlama zamanı)	1-999	Cooperate with PLC control system
Intermittent time (Bekleme zamanı)	1-999	Cooperate with PLC control system
Output bore	Q4 or Q6	Q4 or Q6
Max. Output pressure MPA (kgf/cm <sup>2</sup> )	3 (30)	3 (30)
Output volume (cc/min.)	600 cc/min	600 cc/min
Float switch	O	O
Pressure release device	X (Option)	X (Option)
Pressure switch (kgf/cm <sup>2</sup> )	X (Option)	X (Option)
Pressure gauge	O	O
Alarm beeper	O	X
Tank capacity LT	8Lt.Alum.Tank	8Lt. Alum.Tank
Fiyat USD.-		



YAP-8LT ALUM.TANK DIGITAL TIMER

YAH-8LT ALUM.TANK

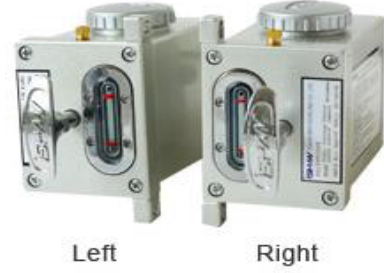
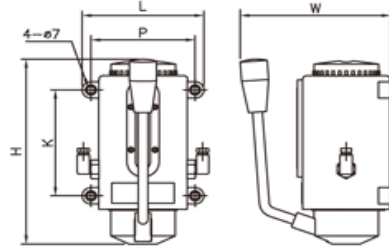


**YML ROCK TYPE OILER - YMT PULL TYPE OILER**

Model	YML-6	YML-8	YMT-8
Output Volume	6 cc/cy	8 cc/cy	8 cc/cy
Max.output press.(kgf/cm2)	15	15	5 (average)
Reservoir capacity	350 cc	600 cc	600 cc
Effective capacity	250 cc	450 cc	550 cc
Output bore	Q4 or Q6	Q4 or Q6	Q4
Direction of bore	left or right	left or right	up or down
<b>Fiyat USD.-</b>			



**YML-8**



**YMT-8**

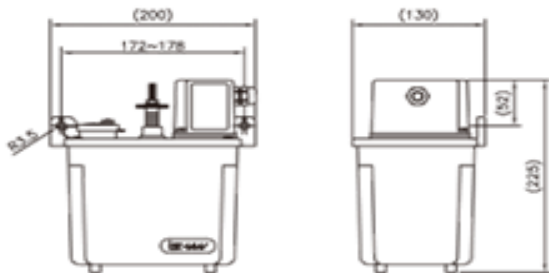
**YESA-YESB AUTOMATIC MANUAL (KAMLI) LUB.**

Model	Intermittent time	Voltage (Single phase)	Capacity of output	Output bore	Fiyat USD.-
	(minute)				
YESA	3/5/10/15/30/60 min.	110V or 220V	Output vol. 3-6cc.	Q4 or Q6	
YESB	*(Unchangeable)		0.3A (Float swit.)		

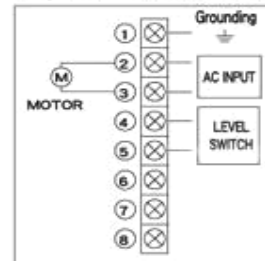
**YESA  
2 LT PLAST TANK**



**YESB 2LT. PLAST TANK  
SEVIYE SWITCH'li**



**YESA/YESB WIRING DIAGRAM**



**YESB yedek synchronous motor 4 rpm, 6,5 rpm, 9 rpm**



COOLING CYCLE LUBRICATION SYSTEM

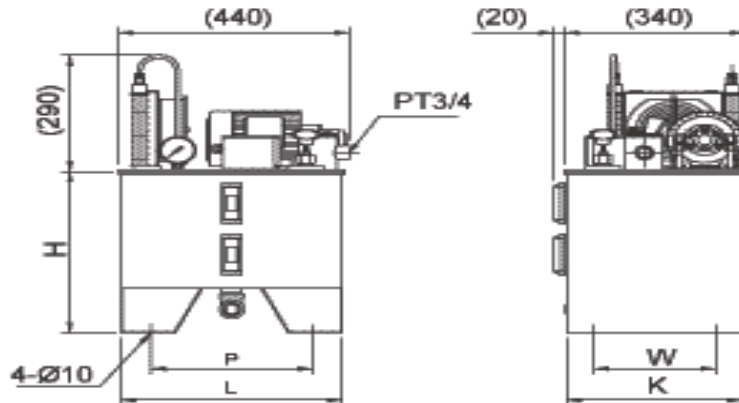
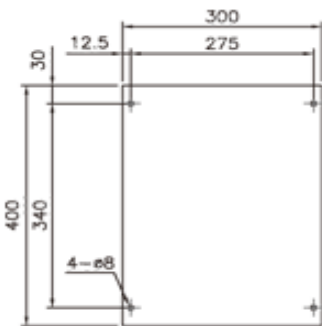
Model	YLC-60lt./min. Üst grup	YLD-30H (Tank hariç)
Voltage (Optinal)	110V/220V (Single Phase)	110V/220V (Single Phase)
	220V/380V (Three Phase)	220V/380V (Three Phase)
	220V/440V (Three Phase)	220V/440V (Three Phase)
Max. Output pressure MPA (kgf/cm2)	0.5(5)	0.5(5)
Output Volume (L/min) mini pompa optinal	2.7 lt & 4.5 lt & 6.3 lt.	2.7 lt & 4.5 lt & 6.3 lt.
Water Input Volume (L/min)	60 & 100	X
Output Bore	PT 3/4	Q6 or Q8 or Q10
Fiyat USD.-		



YLC 60LT ÜST GRUP (Soğutucu + Motor/Pompa + Filtre)

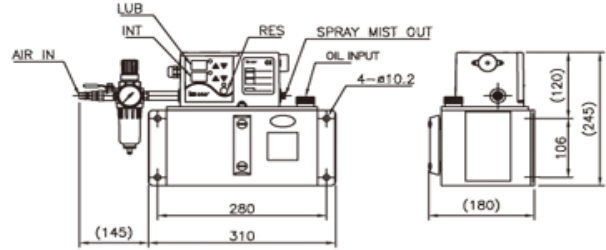


YLD-30 H (Tank hariç komple)



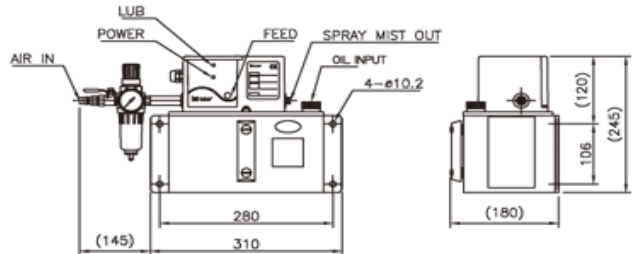
**YSM-A MICROCOMPUTER SPRAY MIST LUBRICATOR**

Type	YSM-A
Lubrication Time (0,1sec)	1-999
voltage (Single Phase)	110 V or 220 V
Capacity of Terminal Output (A)	3
Output Bore	Q6
Air Pressure Range	0,3 - 0,5
Mpa(kgf/cm <sup>2</sup> )	(2.5)
Spray Particle Size	4-10
Alarm Beeper	O
Float Switch	O
Tank Capacity (L)	4lt.Alum.Tank
<b>Fiyat USD.-</b>	



**YSM-C AUTOMATIC SPRAY MIST LUBRICATOR**

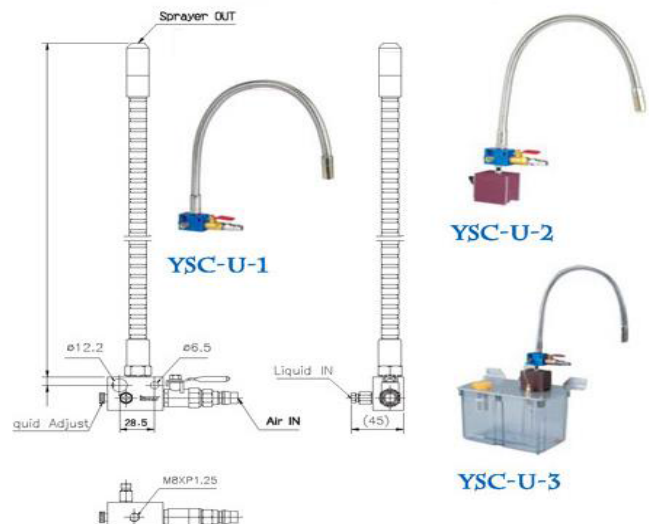
Type	YSM-C
Lubrication Time (0,1sec)	Cooperate with PLC Control System
voltage (Single Phase)	110 V or 220 V
Capacity of Terminal Output (A)	0,3 (Float Switch)
Output Bore	Q6
Air Pressure Range	0,3 - 0,5
Mpa(kgf/cm <sup>2</sup> )	(2.5)
Spray Particle Size	4-10
Alarm Beeper	X
Float Switch	O (NC)
Tank Capacity (L)	4lt.Alum.Tank
<b>Fiyat USD.-</b>	



**YSC-U OIL MIST NOZZLE**

Liquid	Consumption cc/min	YSC-U-1	YSC-U-2	YSC-U-3
Water	16			
Oil (R32)	7	145.- USD	170.-USD	235.- USD

- \*Based on the max. Output pres. 0,4 Mpa ( 4 kgf/cm<sup>2</sup>)
- \*Compressed air pres. 0,25 Mpa (2,5 kgf/cm<sup>2</sup>)
- \*Viscosity 0-68 cSt.



YGL-A & YGL-R TYPE MICROCOMPUTER GREASE LUB.

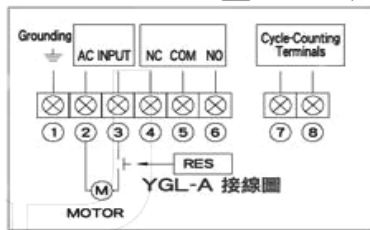
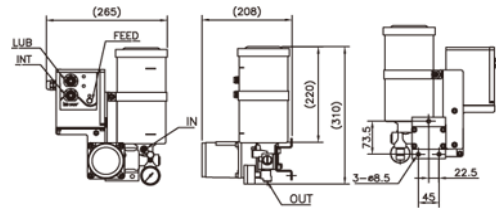
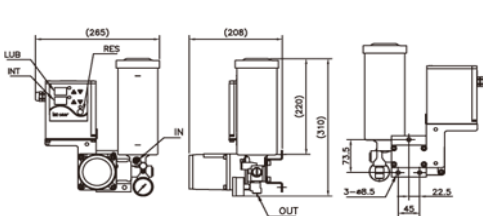
Model	YGL-A08, YGL-A120, YGL-A200			YGL-R08, YGL-R120, YGL-R200		
Voltage (single phase)	110V & 220V	DC24		110V & 220V		
Power (W)	25	28		25		
Capacity of output	3			3		
Lubricating time (Yağlama zamanı)	1-999			1-180		
Intermittent time (Bekleme zamanı)	1-999(minute/hour/cycle)			1-180 (minute)		
Output bore	PT1/4					
Max. Output pressure MPA (kgf/cm <sup>2</sup> )	8-10(8-100)			8-10(80-100)		
Output volume	13 up			13 up		
Pressure gauge	0			0		
Cup capacity (cc)	800 cc.	1200 cc.	2000 cc.	8000 cc.	1200 cc.	2000 cc.
Fiyat USD.- 220VAC						
Fiyat USD.- 24VDC Digital Timer'li						



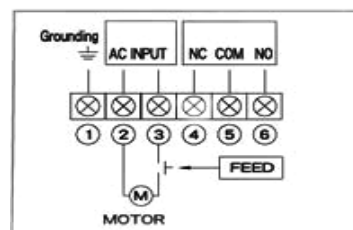
YGL-A08 DIGITAL TIMER 800cc.



YGL-R120 ANALOG TIMER



YGL-A WIRING DIAGRAM



YGL-R WIRING DIAGRAM

YGL-C & YGL-D AUTOMATIC GREASE LUB (Direkt)

YGL-T/S & YGL-S04 MANUEL GRES LUB

Model	YGL-C08, YGL-C120, YGL-C200			YGL-D08, YGL-D120, YGL-D200			YGL-T08 & YGL-S08	YGL-S04 Tube cart.type
Voltage (single phase)	110V & 220V			DC24			Piston Manuel	Piston Manuel
Power (W)	25 W			28 W			Grease Lub	Grease Lub
Lubricating time (Yağlama zamanı)	Cooperate with PLC control system						Pres.release	Pres.release
Intermittent time (Bekleme zamanı)	Cooperate with PLC control system						device	device
Output bore	PT1/4						Q6	Q6
Max. pressure MPA (kgf/cm2)	8-10 (8-100)						10 (100)	10 (100)
Output volume (cc/min)	13 up							Cartridge
Pressure gauge	O						X	Type
Cup capacity (cc)	800cc.	1200c.	2000cc.	800cc.	1200c.	2000cc.	800cc.	400cc.
Fiyat USD.-								



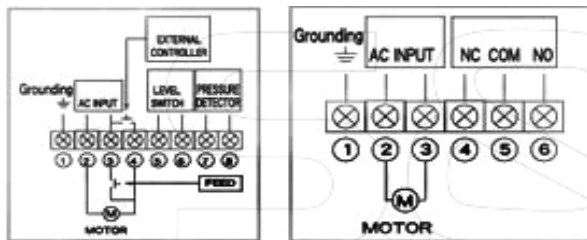
YGL-C08 Direkt



YGL-D08 D24VDC Direkt



YGL-S Manuel  
pressure rel.device



YGL-C WIRING DIAGRAM YGL-D WIRING DIAGRAM

YGL-T



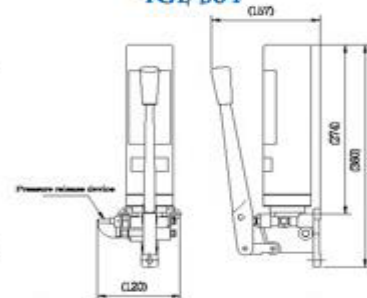
YGL-S04  
(Tube Type)



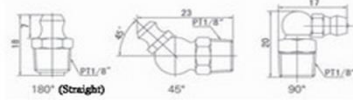
YGL-S04



YGL-T08

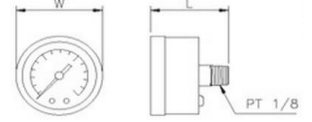


Pressure release device



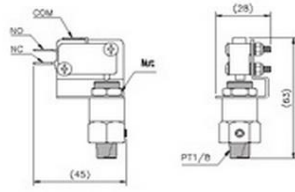
**Grease Nozzle**

Model	Spec	Fiyat USD.-
440029	PT1/4" * 45°	
440026	PT1/8" * 45°	
440027	PT1/8" * 90°	
440057	M8*90°	
440023	PT1/4" * 180°(straight)	
440000	PT1/8" * 180°(straight)	
440047	M8*180°(straight)	



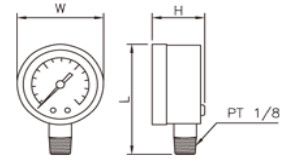
**Horizontal Pressure Gauge**

Model	Specification (kgf/cm <sup>2</sup> )	Fiyat USD.-
327000	Q40 çap / 15 bar	
327001	Q40 çap / 35 bar	
327400	Q50 çap / 35 bar	



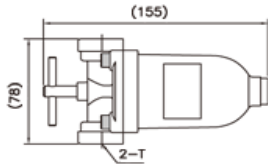
**Pressure Switch**

Model	Specification (kgf/cm <sup>2</sup> )	Fiyat USD.-
321661	2,5 - 1,9	
321660	12 - 9	



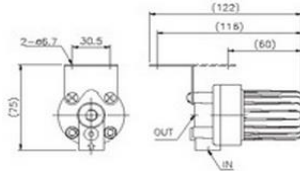
**Vertical Pressure Gauge**

Model	Specification (kgf/cm <sup>2</sup> )	Fiyat USD.-
327707	Q40 çap / 15 bar	
327610	Q40 çap / 35 bar	



**Adjustable Oil Filter**

Model	Inlet/Outlet Thread	Filter Precision	Max. Output Volume (L/min)	Max Pressure	Fiyat USD.-
PR-C1	PS 1/4 * PS 1/4	60	20L/min	1,5 Mpa (15 kgf/cm <sup>2</sup> )	
PR-C2	PS 3/8 * PS 3/8	60	30L/min		
PR-C3	PS 1/2 * PS 1/2	60	30L/min		

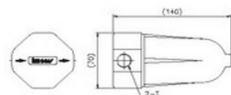


**FL Oil Filter**

Model	Max Operation Pressure (kgf/cm <sup>2</sup> )	Filter Precision	Max. Output Volume (L/min)	IN * OUT	Fiyat USD.-
FL-010025	25	10	2,5	PS1/8 * PS1/8 PS1/4*PS1/4	
FL-025030	25	25	3		
FL-125035	25	125	3,5		

**Double - Sided Oil Filter**

Model	T	Filter Precision	Fiyat USD.-
PR0202	PS 1/4 * PS 1/4	196	
PR0303	PS 3/8 * PS 3/8	196	









### GRES YAĞLAMA UNIT.



MADE IN TAIWAN

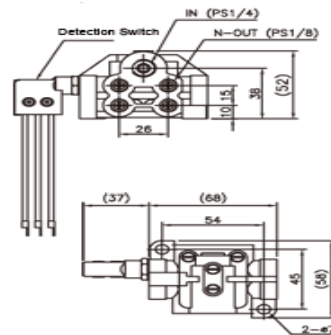
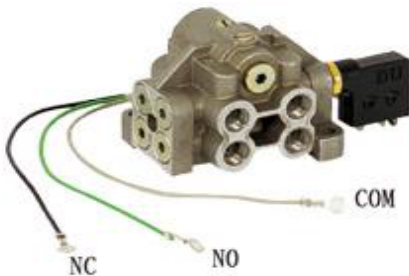


Model	SSG-D 1000 24VDC
Type	D
Distributor	DU-series
Voltage /Single Phase	24VDC
Cons. Power (W)	93
Output Power (W)	45
Current Value (A)	Above 3
Output bore (Çıkış çap)	Q6
Max. Basınç Mpa (kgf/cm2)	Max. 15 (150)
Debi cc./min.	Above 15 cc.
Float Sw. (Sev.Switch)	Option
Pres.Gauge (Manometre)	Mpa & kgf/cm2
Tank Kapasite (cc.)	1000 cc.
Net Ağırlık (Kg)	2,1 kg
Grease viscosity (NLGI)	No. 0 & No.00



### DU-Series Grease Distributor 150 bar 0,33cc/stroke

Model	Detect sw. Optinal	No of Outlets	Out.Volume	Fiyat USD.-
DU-4T	X	4	0,33 cc.	
DU-4P detection sw.	O	4	0,33 cc.	
DU-6T	X	6	0,33 cc.	
DU-6P detection sw.	O	6	0,33 cc.	
DU-8T	X	8	0,33 cc.	
DU-8P detection sw.	O	8	0,33 cc.	
DU-10T	X	10	0,33 cc.	
DU-10P detection sw.	O	10	0,33 cc.	
DU-12T	X	12	0,33 cc.	
DU-12P detection sw.	O	12	0,33 cc.	



DU-4P with detection switch  
(Arıza tesbit switch)