

NG6 (1/4") DIN (Soket Tip) BOBINLİ YÖN KONTROL VALFLERİ (CETOP 3)

Tipi	Norm	Konum	Voltaj	Max. Debi	Max. Basınç	Fiyat
CETOP 3	NG 6	Spool Tipi	AC-DC	lt/dk	bar	USD.-

DSG-2B2-N01-A110	1/4"	NG6 4/2 TB	110	30-60	315	
DSG-2B2-N01-A220	1/4"	NG6 4/2 TB	220	30-60	315	
DSG-2B2-N01-D12	1/4"	NG6 4/2 TB	12	30-60	315	
DSG-2B2-N01-D24	1/4"	NG6 4/2 TB	24	30-60	315	

DSG-2B3B-N01-A110	1/4"	NG6 4/2 HA	110	30-60	315	
DSG-2B3B-N01-A220	1/4"	NG6 4/2 HA	220	30-60	315	
DSG-2B3B-N01-D12	1/4"	NG6 4/2 HA	12	30-60	315	
DSG-2B3B-N01-D24	1/4"	NG6 4/2 HA	24	30-60	315	

DSG-3C2-N01-A110	1/4"	NG6 4/3 KM	110	30-60	315	
DSG-3C2-N01-A220	1/4"	NG6 4/3 KM	220	30-60	315	
DSG-3C2-N01-D12	1/4"	NG6 4/3 KM	12	30-60	315	
DSG-3C2-N01-D24	1/4"	NG6 4/3 KM	24	30-60	315	

DSG-3C3-N01-A110	1/4"	NG6 4/3 HM	110	30-60	315	
DSG-3C3-N01-A220	1/4"	NG6 4/3 HM	220	30-60	315	
DSG-3C3-N01-D12	1/4"	NG6 4/3 HM	12	30-60	315	
DSG-3C3-N01-D24	1/4"	NG6 4/3 HM	24	30-60	315	

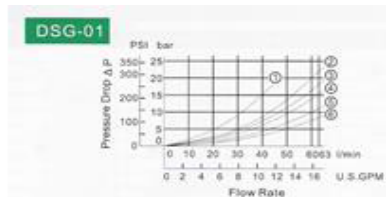
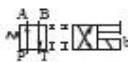
DSG-3C4-N01-A110	1/4"	NG6 4/3 ABT	110	30-60	315	
DSG-3C4-N01-A220	1/4"	NG6 4/3 ABT	220	30-60	315	
DSG-3C4-N01-D12	1/4"	NG6 4/3 ABT	12	30-60	315	
DSG-3C4-N01-D24	1/4"	NG6 4/3 ABT	24	30-60	315	

DSG-3C60-N01-A110	1/4"	NG6 4/3 AM	110	20-40	250	
DSG-3C60-N01-A220	1/4"	NG6 4/3 AM	220	20-40	250	
DSG-3C60-N01-D12	1/4"	NG6 4/3 AM	12	20-40	250	
DSG-3C60-N01-D24	1/4"	NG6 4/3 AM	24	20-40	250	

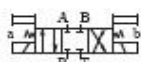
DSG-2D2-N01-D12	1/4"	NG6-4/2 ÇB DETANTLI	12	30-60	315	
DSG-2D2-N01-D24	1/4"	NG6-4/2 ÇB DETANTLI	24	30-60	315	
DSG-3C12-N01-D24	1/4"	NG6-4/3 AT (A TANK'a)	24	30-60	315	



DSG-01-2B2



DSG-01-3C2



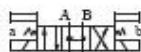
DSG-01-3C4



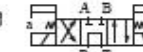
DSG-01-2D2



DSG-01-3C3



DSG-01-3C60



NG10 (1/2") DIN (Soket Tip) BOBİNLİ YÖN KONTROL VALFLERİ (CETOP 5)

Tipi CETOP 5	Norm NG 10	Konum Spool Tipi	Voltaj AC-DC	Max Basınç bar	Max Debi lt/dk	Fiyat USD.-
-----------------	---------------	---------------------	-----------------	-------------------	-------------------	----------------

DSG-2B2-N03-A110	1/2"	NG10 4/2 TB	110	315	60-120	
DSG-2B2-N03-A220	1/2"	NG10 4/2 TB	220	315	60-120	
DSG-2B2-N03-D12	1/2"	NG10 4/2 TB	12	315	60-120	
DSG-2B2-N03-D24	1/2"	NG10 4/2 TB	24	315	60-120	

DSG-2B3B-N03-A110	1/2"	NG10 4/2 HA	110	315	60-120	
DSG-2B3B-N03-A220	1/2"	NG10 4/2 HA	220	315	60-120	
DSG-2B3B-N03-D12	1/2"	NG10 4/2 HA	12	315	60-120	
DSG-2B3B-N03-D24	1/2"	NG10 4/2 HA	24	315	60-120	

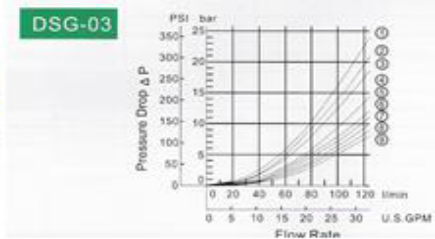
DSG-3C2-N03-A110	1/2"	NG10 4/3 KM	110	315	60-120	
DSG-3C2-N03-A220	1/2"	NG10 4/3 KM	220	315	60-120	
DSG-3C2-N03-D12	1/2"	NG10 4/3 KM	12	315	60-120	
DSG-3C2-N03-D24	1/2"	NG10 4/3 KM	24	315	60-120	

DSG-3C3-N03-A110	1/2"	NG10 4/3 HM	110	315	60-120	
DSG-3C3-N03-A220	1/2"	NG10 4/3 HM	220	315	60-120	
DSG-3C3-N03-D12	1/2"	NG10 4/3 HM	12	315	60-120	
DSG-3C3-N03-D24	1/2"	NG10 4/3 HM	24	315	60-120	

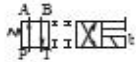
DSG-3C4-N03-A110	1/2"	NG10 4/3 ABT	110	315	60-120	
DSG-3C4-N03-A220	1/2"	NG10 4/3 ABT	220	315	60-120	
DSG-3C4-N03-D12	1/2"	NG10 4/3 ABT	12	315	60-120	
DSG-3C4-N03-D24	1/2"	NG10 4/3 ABT	24	315	60-120	

DSG-3C60-N03-A110	1/2"	NG10 4/3 AM	110	250	60-100	
DSG-3C60-N03-A220	1/2"	NG10 4/3 AM	220	250	60-100	
DSG-3C60-N03-D12	1/2"	NG10 4/3 AM	12	250	60-100	
DSG-3C60-N03-D24	1/2"	NG10 4/3 AM	24	250	60-100	

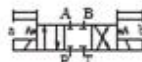
DSG-3C12-N03-D24	1/2"	NG10-4/3 AT (A TANK'a)	24	315	60-100	
------------------	------	------------------------	----	-----	--------	--



DSG-03-2B2



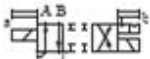
DSG-03-3C2



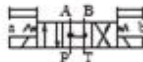
DSG-03-3C4



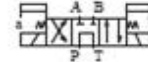
DSG-03-2D2



DSG-03-3C3



DSG-03-3C60



NG6 (1/4') TERMINAL BOX TIP YÖN KONTROL VALFLERİ

Tipi	Norm	Konum	Voltaj	Max Basınç	Max Debi	Fiyat
CETOP 3	NG 6	Spool Tipi	AC-DC	bar	lt/dk	USD.-

DSG-2B2-01...VAC	1/4"	NG6 4/2 TB	110V-220V	315	30-60	
DSG-2B2-01...VDC	1/4"	NG6 4/2 TB	12V-24V	315	30-60	

DSG-3C2-01...VAC	1/4"	NG6 4/3 KM	110V-220V	315	30-60	
DSG-3C2-01...VDC	1/4"	NG6 4/3 KM	12V-24V	315	30-60	

DSG-3C3-01...VAC	1/4"	NG6 4/3 HM	110V-220V	315	30-60	
DSG-3C3-01...VDC	1/4"	NG6 4/3 HM	12V-24V	315	30-60	

DSG-3C4-01...VAC	1/4"	NG6 4/3 ABT	110V-220V	315	30-60	
DSG-3C4-01...VDC	1/4"	NG6 4/3 ABT	12V-24V	315	30-60	

DSG-3C60-01...VAC	1/4"	NG6 4/3 AM	110V-220V	315	30-60	
DSG-3C60-01...VDC	1/4"	NG6 4/3 AM	12V-24V	315	30-60	

DSG-3C11-01...VAC	1/4"	NG6 4/3 PA-BT Kapalı	110V-220V	315	30-60	
DSG-3C11-01...VDC	1/4"	NG6 4/3 PA-BT Kapalı	12V-24V	315	30-60	



NG10 (1/2') TERMINAL BOX TIP YÖN KONTROL VALFLERİ

Tipi	Norm	Konum	Voltaj	Max Basınç	Max Debi	Fiyat
CETOP 5	NG 10	Spool Tipi	AC-DC	bar	lt/dk	USD.-

DSG-2B2-03...VAC	1/2"	NG10 4/2 TB	110V-220V	320	60-120	
DSG-2B2-03...VDC	1/2"	NG10 4/2 TB	12V-24V	320	60-120	

DSG-3C2-03...VAC	1/2"	NG10 4/3 KM	110V-220V	320	60-120	
DSG-3C2-03...VDC	1/2"	NG10 4/3 KM	12V-24V	320	60-120	

DSG-3C3-03...VAC	1/2"	NG10 4/3 HM	110V-220V	320	60-120	
DSG-3C3-03...VDC	1/2"	NG10 4/3 HM	12V-24V	320	60-120	

DSG-3C4-03...VAC	1/2"	NG10 4/3 ABT	110V-220V	320	60-120	
DSG-3C4-03...VDC	1/2"	NG10 4/3 ABT	12V-24V	320	60-120	

DSG-3C60-03...VAC	1/2"	NG10 4/3 AM	110V-220V	320	60-120	
DSG-3C60-03...VDC	1/2"	NG10 4/3 AM	12V-24V	320	60-120	



NG16 (5/8") VALF - GÖVDE (CETOP 7)

Tipi CETOP 7	Konum Spool Tipi	Max.Basınç Bar	Max.Debi lt/dk	Fiyat USD.-
-----------------	---------------------	-------------------	-------------------	----------------

DSHG-2B2-04-1P1D	NG16 TB GÖVDE	315	150-300	
DSHG-3C2-04-1P1D	NG16 KM GÖVDE	315	150-300	
DSHG-3C3-04-1P1D	NG16 HM GÖVDE	315	150-300	
DSHG-3C4-04-1P1D	NG16 ABT GÖVDE	315	150-300	
DSHG-3C60-04-1P1D	NG16 AM GÖVDE	315	150-235	

NG25 (3/4") VALF - GÖVDE (CETOP 8)

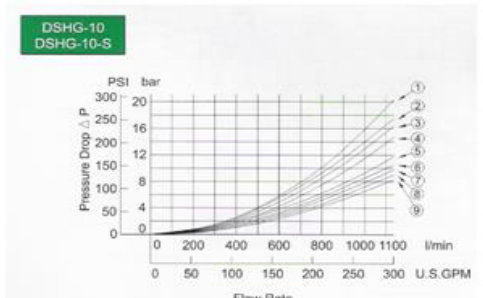
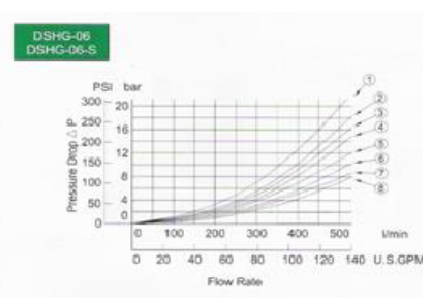
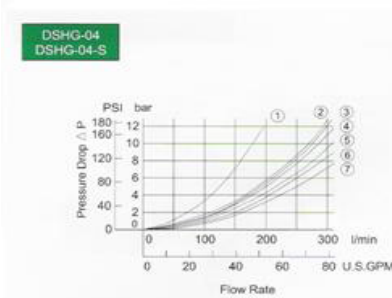
Tipi CETOP 8	Konum Spool Tipi	Max.Basınç Bar	Max.Debi lt/dk	Fiyat USD.-
-----------------	---------------------	-------------------	-------------------	----------------

DSHG-2B2-06-1P1D	NG25 TB GÖVDE	315	250-500	
DSHG-3C2-06-1P1D	NG25 KM GÖVDE	315	250-400	
DSHG-3C3-06-1P1D	NG25 HM GÖVDE	315	250-400	
DSHG-3C4-06-1P1D	NG25 ABT GÖVDE	315	250-400	
DSHG-3C60-06-1P1D	NG25 AM GÖVDE	315	230-300	
DSHG-3C60-06-1P1D-C	NG25 AM GÖVDE-ÇEKİLİ	315	230-300	

NG32 (1") VALF - GÖVDE (CETOP 10)

Tipi CETOP 10	Konum Spool Tipi	Max.Basınç Bar	Max.Debi lt/dk	Fiyat USD.-
------------------	---------------------	-------------------	-------------------	----------------

DSHG-2B2-10-1P1D	NG32 TB GÖVDE	315	550-750	
DSHG-3C2-10-1P1D	NG32 KM GÖVDE	315	550-750	
DSHG-3C3-10-1P1D	NG32 HM GÖVDE	315	550-750	
DSHG-3C4-10-1P1D	NG32 ABT GÖVDE	315	550-750	
DSHG-3C60-10-1P1D	NG32 AM GÖVDE	315	400-600	
DSHG-3C60-10-1P1D-C	NG32 AM GÖVDE-ÇEKİLİ	315	400-600	

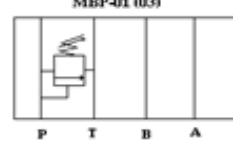
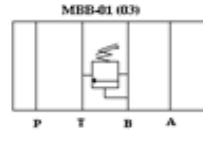
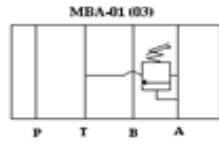


NG6 MODÜLER BASINÇ AYAR VALFLERİ (CETOP 3)

Tipi CETOP 3	Kontrol Pozisyonu	Bağlantı Norm	Max. Basınç Bar	Max. Debi lt/dk	Fiyat USD.-
MBP-01-H20	P HATTI	NG6	70-210	35	
MBA-01-H20	A HATTI	NG6	70-210	35	
MBB-01-H20	B HATTI	NG6	70-210	35	
MBW-01-H20	AB HATTI (İkiz)	NG6	70-210	35	

NG10 MODÜLER BASINÇ AYAR VALFLERİ (CETOP 5)

Tipi CETOP 5	Kontrol Pozisyonu	Bağlantı Norm	Max. Basınç Bar	Max. Debi lt/dk	Fiyat USD.-
MBP-03-H20	P HATTI	NG10	70-210	70	
MBA-03-H20	A HATTI	NG10	70-210	70	
MBB-03-H20	B HATTI	NG10	70-210	70	
MBW-03-H20	AB HATTI (İkiz)	NG10	70-210	70	



NG6 MODÜLER KİLİTLEME VALFLERİ (CETOP 3)

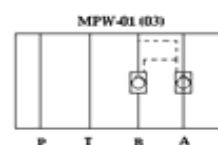
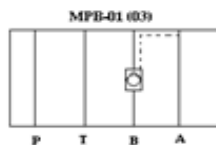
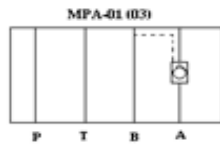
Tipi CETOP 3	Kontrol Pozisyon	Bağlantı Norm	Max. Basınç Bar	Max. Debi lt/dk	Fiyat USD.-
MPA-01-20	A HATTI	NG6	250	50	
MPB-01-20	B HATTI	NG6	250	50	
MPW-01-20	AB HATTI (İkiz)	NG6	250	50	

NG10 MODÜLER KİLİTLEME VALFLERİ (CETOP 5)

Tipi CETOP 5	Kontrol Pozisyon	Bağlantı Norm	Max. Basınç Bar	Max. Debi lt/dk	Fiyat USD.-
MPA-03-20	A HATTI	NG10	250	100	
MPB-03-20	B HATTI	NG10	250	100	
MPW-03-20	AB HATTI (İkiz)	NG10	250	100	

NG16 & NG25 MODÜLER İKİZ KİLİTLEME VALFLERİ (CETOP 7 & 8)

Tipi CETOP 7/8	Kontrol Pozisyon	Bağlantı Norm	Max. Basınç Bar	Max. Debi lt/dk	Fiyat USD.-
MPW-04-20	AB HATTI (İkiz)	NG16	250	190	
MPW-06-20	AB HATTI (İkiz)	NG25	250	300	

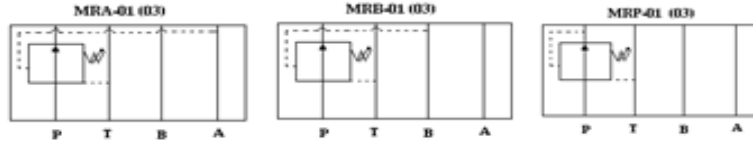


NG6 MODÜLER BASINÇ DÜŞÜRÜCÜ VALFLER (CETOP 3)

Tipi CETOP 3	Kontrol Pozisyonu	Bağlantı Norm	Max. Basınç Bar	Max. Debi lt/dk	Fiyat USD.-
MRA-01-H20	A HATTI	NG6	70-210	35	
MRB-01-H20	B HATTI	NG6	70-210	35	
MRP-01-H20	P HATTI	NG6	70-210	35	

NG10 MODÜLER BASINÇ DÜŞÜRÜCÜ VALFLER (CETOP 5)

Tipi CETOP 5	Kontrol Pozisyonu	Bağlantı Norm	Max. Basınç Bar	Max. Debi lt/dk	Fiyat USD.-
MRA-03-H20	A HATTI	NG10	70-210	50	
MRB-03-H20	B HATTI	NG10	70-210	50	
MRP-03-H20	P HATTI	NG10	70-210	50	

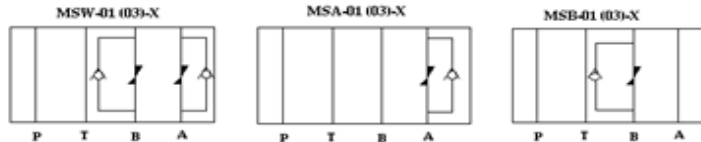


NG6 MODÜLER DEBİ (HIZ) AYAR VALFLERİ (CETOP 3)

Tipi CETOP 3	Kontrol Pozisyon	Bağlantı Norm	Max. Basınç Bar	Max. Debi lt/dk	Fiyat USD.-
MSA-01-X20	A HATTI	NG6	250	35	
MSB-01-X20	B HATTI	NG6	250	35	
MSW-01-X20	AB HATTI (ikiz)	NG6	250	35	

NG10 MODÜLER (HIZ) DEBİ AYAR VALFLERİ (CETOP 5)

Tipi CETOP 5	Kontrol Pozisyon	Bağlantı Norm	Max. Basınç Bar	Max. Debi lt/dk	Fiyat USD.-
MSA-03-X20	A HATTI	NG10	250	70	
MSB-03-X20	B HATTI	NG10	250	70	
MSW-03-X20	AB HATTI (ikiz)	NG10	250	70	





NG 16 BASINÇ AYAR & Sıfırlamalı BASINÇ AYARLAR (CETOP 7)

Tipi CETOP 7	Kontrol Pozisyon	Bağlantı Norm	Max.Basınç Bar	Max Debi lt./dk.	Fiyat USD.-
SBG-03-H20	Manuel	NG16	250	100	
SBSG-03-H20	Elektrikli	NG16	250	100	

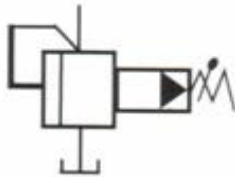
NG 25 BASINÇ AYAR & Sıfırlamalı BASINÇ AYARLAR (CETOP 7)

Tipi CETOP 8	Kontrol Pozisyon	Bağlantı Norm	Max.Basınç Bar	Max Debi lt/dk	Fiyat USD.-
SBG-06-H20	Manuel	NG25	250	200	
SBSG-06-H20	Elektrikli	NG25	250	200	

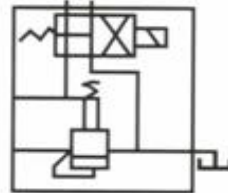
NG 32 BASINÇ AYAR & Sıfırlamalı BASINÇ AYARLAR (CETOP 10)

Tipi CETOP 8	Kontrol Pozisyon	Bağlantı Norm	Max.Basınç Bar	Max Debi lt/dk	Fiyat USD.-
SBG-10-H20	Manuel	NG32	250	400	
SBSG-10-H20	Elektrikli	NG32	250	400	

*Pilot Valf Dahil Değildir



SBG Bas.Ayar

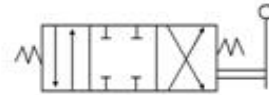


SBSG Bas.Ayar



NG6 Manual (Kol) Kumanda Valfleri Max. 315 bar

Tipi	Bağlantı/Dış Ölçüsü	Debi (lpm)	Fiyat USD.-
DMG-01-2B2-20	NG6 TB Konum (Spring)	63 lpm.	
DMG-01-3C2-20	NG6 KM Konum (Spring)	63 lpm.	
DMG-01-3C4-20	NG6 ABT Konum (Spring)	63 lpm.	
DMG-01-3C60-20	NG6 AM Konum (Spring)	63 lpm.	



NG10 Manual (Kol) Kumanda Valfleri Max. 315 bar

Tipi	Bağlantı/Dış Ölçüsü	Debi (lpm)	Fiyat USD.-
DMG-03-2B2-20	NG10 TB Konum (Spring)	120 lpm.	
DMG-03-3C2-20	NG10 KM Konum (Spring)	120 lpm.	
DMG-03-3C4-20	NG10 ABT Konum (Spring)	120 lpm.	
DMG-03-3C60-20	NG10 AM Konum (Spring)	120 lpm.	



Tipi	Bağlantı/Diř Ölçüsü	Fiyat USD.-
CRG-03 CHECK VALF	1/2 CHECK VALF PLEYT TİP	
CRG-06 CHECK VALF	3/4 CHECK VALF PLEYT TİP	
CPG-03 PİLOT CHECK VALF	1/2 CHECK VALF HAT TİPİ	
CPG-06 PİLOT CHECK VALF	3/4 CHECK VALF HAT TİPİ	



Tipi	Bağlantı/Diř Ölçüsü	Fiyat USD.-
RG-03-B-20 (7-70 bar)	1/2 Bas.Düşürücü Valf (Sub-Pleyt Tip)	
RG-06-B-20 (7-70 bar)	3/4 Bas.Düşürücü Valf (Sub-Pleyt Tip)	
RG-03-H-20 (70-225 bar)	1/2 Bas.Düşürücü VALF (Sub-Pleyt Tip)	
RG-06-H-20 (70-225 bar)	3/4 Bas.Düşürücü Valf (Sub-Pleyt Tip)	



Tipi	Bağlantı/Diř Ölçüsü	Fiyat USD.-
DCG-01-2B2-20	NG6 CAM KONT.YÖN VALFİ (Makaralı)	
DCG-03-2B2-20	NG10 CAM KONT.YÖN VALFİ (Makaralı)	



Basınç Şalterleri

Tipi	Bağlantı/Diř Ölçüsü	Fiyat USD.-
DNA-100K-22B	1/4 BAS. ŞALTERİ (15-100 Bar)	
DNA-250K-22B	1/4 BAS. ŞALTERİ (40-250 Bar)	
DNA-360K-22B	1/4 BAS. ŞALTERİ (50-360 Bar)	
DNC-150K-22B	1/4 BAS. ŞALTERİ (30-150 Bar)	



		Fiyat USD.-
İŞIKLI SOKET AC	DIN 43650 AC+LED	
İŞIKLI SOKET DC	DIN 43650 DC+LED	



Yedek Valf Bobinleri (DIN/Soket tip & Terminal Tip)

Tipi	NG6-NG10 Voltaj	Q İç Çap (mm.)	Fiyat USD.-
DSG-01-NG6	(1/4) 110-220V AC TERMINAL TİP BOBİN	19 mm.	
DSG-01-NG6	(1/4) 12-24V DC TERMINAL TİP BOBİN	19 mm.	
DSG-N-01-NG6	(1/4) 110-220V AC DIN/SOKET TİP BOBİN	19 mm.	
DSG-N-01-NG6	(1/4) 12-24V DC DIN/SOKET TİP BOBİN	19 mm.	



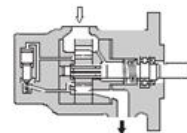
DSG-03-NG10	(1/2) 110-220V AC TERMINAL TİP BOBİN	26 mm.	
DSG-03-NG10	(1/2) 12-24V DC TERMINAL TİP BOBİN	26 mm.	
DSG-N-03-NG10	(1/2) 110-220V AC DIN/SOKET TİP BOBİN	26 mm.	
DSG-N-03-NG10	(1/2) 12-24V DC DIN SOKET TİP BOBİN	26 mm.	



PALETLİ POMPALAR (HQ)

Cinsi	Delivery Flow (lpm)				Runnig speed (rpm)		Max. Basınç bar	Fiyat USD.-	
	Running Speed (rpm)				Max	Min			
	1000	1200	1500	1800					
HQ15	HQ15-06	6,2	7,4	9,3	11,2	1800	1200	210	
	HQ15-08	8,1	9,7	12,1	14,6	1800	950	210	
	HQ15-11	11,2	13,4	16,8	20,1	1800	950	245	
	HQ15-14	14,3	17,1	21,5	25,7	1800	950	245	
	HQ15-17	17,1	20,5	25,6	30,7	1800	950	245	
	HQ15-19	19,2	23	28,8	34,5	1800	950	245	
	HQ15-23	23,3	27,9	34,9	41,9	1800	950	245	
	HQ15-26	26,1	31,3	39,1	46,9	1800	950	245	
	HQ15-31	31,1	37,3	46,6	-	1500	950	245	
HQ25	(S)HQ25-18	18,1	21,7	27,2	32,6	1800	950	245	
	(S)HQ25-22	22,1	26,5	33,2	39,8	1800	950	245	
	(S)HQ25-26	26,2	31,4	39,3	47,1	1800	950	245	
	(S)HQ25-32	32,1	38,5	48,1	57,7	1800	950	245	
	(S)HQ25-38	38,2	45,8	57,3	68,7	1800	950	245	
	(S)HQ25-43	43,2	51,8	64,8	77,7	1800	950	245	
	(S)HQ25-47	47,1	56,5	77	85	1800	950	245	
	(S)HQ25-52	52,3	62,7	78,4	94,1	1800	950	245	
	(S)HQ25-60	60,2	72,7	90,3	108,3	1800	950	210	
	(S)HQ25-65	65,3	78,3	97,9	117,5	1800	950	210	
	(S)HQ25-75	75	90	112,5	-	1500	950	175	
HQ35	(S)HQ35-60	60,3	72,3	90,4	108,5	1800	900	210	
	(S)HQ35-66	66,4	79,6	99,6	119,5	1800	900	210	
	(S)HQ35-76	76,3	91,5	114,4	137,3	1800	900	210	
	(S)HQ35-82	82,2	98,6	123,3	147,9	1800	900	210	
	(S)HQ35-88	88,3	105,9	132,4	158,9	1800	900	210	
	(S)HQ35-94	94,5	113,4	141,7	170,1	1800	900	210	
	(S)HQ35-108	108,2	129,8	162,3	194,4	1800	900	210	
	(S)HQ35-116	116,1	139,3	174,1	208,9	1800	900	175	
	(S)HQ35-125	124,5	149,5	186,9	-	1500	900	175	
HQ45	(S)HQ45-136	136,8	164	204	246	1800	600	175	
	(S)HQ45-156	156,2	188	234	280	1800	600	175	
	(S)HQ45-189	189,5	227	284	340	1800	600	175	
	(S)HQ45-216	216	260	324	-	1500	600	175	
	(S)HQ45-237	237	285	355	-	1500	600	175	

Cartridge Kit	HQ15 seri	
Cartridge Kit	HQ25 seri	
Cartridge Kit	HQ35 seri	



Graphic Symbol





SESSİZ TİP PALETLİ POMPALAR (SHQ)

Cinsi	Depl.		Max. Hız bar	Max. Basınç lt/dak	Fiyat USD.-
	cc/dev.	Galon/dev			

SHQ25-18	18,1	1,1	950-1800	245	
SHQ25-22	22,1	1,35	950-1800	245	
SHQ25-26	26,2	1,61	950-1800	245	
SHQ25-32	32,1	1,97	950-1800	245	
SHQ25-38	38,2	2,34	950-1800	245	
SHQ25-43	43,2	2,64	950-1800	245	
SHQ25-52	52,3	3,19	950-1800	245	
SHQ25-60	60,2	3,67	950-1800	210	
SHQ25-65	65,3	3,99	950-1800	210	
SHQ25-75	75	4,58	950-1500	175	

SHQ35-60	60,3	3,68	900-1800	210	
SHQ35-66	66,4	4,05	900-1800	210	
SHQ35-76	76,3	4,66	900-1800	210	
SHQ35-82	82,2	5,02	900-1800	210	
SHQ35-88	88,3	5,39	900-1800	210	
SHQ35-94	94,5	5,77	900-1800	210	
SHQ35-108	108,2	6,6	900-1800	210	
SHQ35-116	116,1	7,09	900-1800	175	
SHQ35-125	124,5	7,6	900-1500	175	

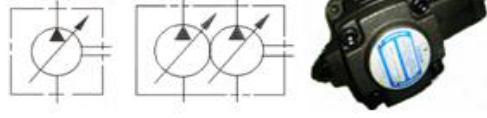
SHQ45-136	136	8,3	600-1800	175	
SHQ45-156	156,2	9,34	600-1800	175	
SHQ45-189	189	11,23	600-1800	175	
SHQ45-216	216	12,26	600-1500	175	
SHQ45-237	237	14,46	600-1500	160	

PV SERİ (VARIABLE VOLUME) Değişken debili PİSTONLU POMPALAR

Kod	Tanım	Özellik	Fiyat USD.-
-----	-------	---------	-------------

PV46-HL3-R-S-F	Load sensing comp. HL	Basınc ve Debi Ayarlı	
PV70-HL3-R-S-F	Load sensing comp. HL	Basınc ve Debi Ayarlı	
PV100-HL3-R-S-F	Load sensing comp. HL	Basınc ve Debi Ayarlı	





MEKANİK BASINÇ REGÜLASYONLU DEĞİŞKEN DEBİLİ PALETLİ POMPALAR

Cinsi	Out.flow at 3,5 bar 1800 rpm lpm	Min-Max Hız dev/dak	Max. Basınç bar	Fiyat USD.-
PVF-12-35-11	6,6 (12lpm)	800-1800	15-35	
PVF-20-35-11	11,1 (20 lpm)	800-1800	15-35	
PVF-30-35-11	16,6 (30 lpm)	800-1800	15-35	
PVF-40-35-11	22,2 (40 lpm)	800-1800	15-35	
PVF-12-55-11	6,6 (12lpm)	800-1800	30-55	
PVF-20-55-11	11,1 (20 lpm)	800-1800	30-55	
PVF-30-55-11	16,6 (30 lpm)	800-1800	30-55	
PVF-40-55-11	22,2 (40 lpm)	800-1800	30-55	
PVF-12-70-11	6,6 (12lpm)	800-1800	50-70	
PVF-20-70-11	11,1 (20 lpm)	800-1800	50-70	
PVF-30-70-11	16,6 (30 lpm)	800-1800	50-70	
PVF-40-70-11	22,2 (40 lpm)	800-1800	50-70	



TANDEM TİP MEKANİK BASINÇ REGÜLASYONLU DEĞİŞKEN DEBİLİ PALETLİ POMPALAR

Cinsi PVDF	Pompa Tipi	Deplasman cc/dev	Min-Max Hız dev/dak	Max. Basınç bar	Fiyat USD.-
PVDF-20+20-070	Tandem	11,1+11,1	800-1800	50-70	
PVDF-30+30-070	Tandem	16,6+16,6	800-1800	50-70	
PVDF-40+40-070	Tandem	22,2+22,2	800-1800	50-70	



ÖN UYARILI BASINÇ REGÜLASYONLU DEĞİŞKEN DEBİLİ PALETLİ POMPALAR

Cinsi	lpm=3,5 bar 1800 rpm	Deplasman cc/dev	Min-Max Hız dev/dak	Max. Basınç bar	Fiyat USD.-
VP5F-A-2	30 lpm	16,6	800-1800	15-35	
VP5F-A-3	30 lpm	16,6	800-1800	20-70	
VP5F-A-4	30 lpm	16,6	800-1800	50-105	
VP5F-A-5	30 lpm	16,6	800-1800	70-140	
VP5F-B-2	40 lpm	22,2	800-1800	15-35	
VP5F-B-3	40 lpm	22,2	800-1800	20-70	
VP5F-B-4	40 lpm	22,2	800-1800	50-105	
VP5F-B-5	40 lpm	22,2	800-1800	70-140	
VP5FD-A-5-A-5	Tandem	16,6+16,6	800-1800	70-140	
VP5FD-B-3-B-3	Tandem	22,2+22,2	800-1800	20-70	





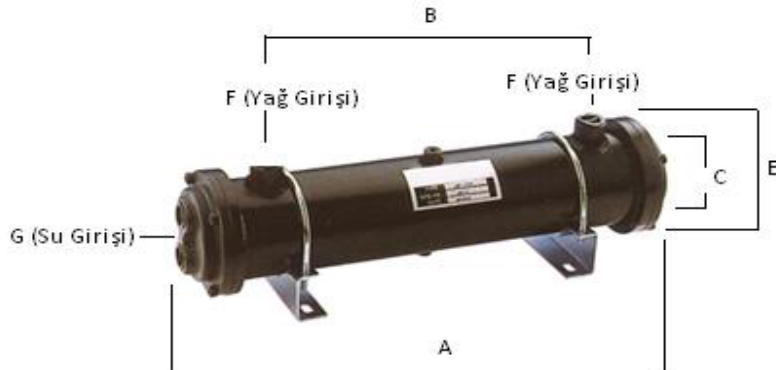
OIL COOLER / SULU YAĞ SOĞUTUCULAR (EŞANJÖR) 12 bar

Model	Bağlantı/Dış Ölç. G Su Girişi	Bağlantı/Dış Ölç. F Yağ Girişi	1,5 bar'da Debi lt/min.	Kapasite Kcal/h 30C	Fiyat USD.-
-------	----------------------------------	-----------------------------------	----------------------------	------------------------	-------------

OR-60L	3/4"	3/4"	60	7000	
OR-100L	3/4"	3/4"	100	12000	
OR-150L	3/4"	1-1/4"	150	19000	
OR-250L	1"	1-1/4"	250	30000	
OR-350L	1"	1-1/4"	350	40000	
OR-600L	1-1/2"	2"	600	62000	
OR-800L	1-1/2"	2"	800	90000	
OR-1000L	1-1/2"	2"	1000	110000	
OR-1200L	1-1/2"	2"	1200	130000	
OR-1400L	1-1/2"	2"	1400	150000	

Model	A mm	B mm	C mm	QD mm	QE mm	F mm (Oil)	G mm (Water)
-------	------	------	------	-------	-------	------------	--------------

OR-60L	460	295	40	89.1	120	3/4"	3/4"
OR-100L	542	370	40	114.3	120	3/4"	3/4"
OR-150L	573	375	75	139.8	170	1 1/4"	3/4"
OR-250L	800	600	75	139.8	170	1 1/4"	1"
OR-350L	1198	1000	75	139.8	170	1 1/4"	1"
OR-600L	1215	970	86	165.2	196	2"	1 1/4"
OR-800L	1715	1470	86	165.2	196	2"	1 1/4"
OR-1000L	2110	1910	87	165.2	196	2"	1 1/4"
OR-1200L	1690	1390	114	165.2	269	2-1/2"	2"
OR-1400L	1840	1530	114	165.2	269	2-1/2"	2"



KELEPÇELİ FLANŞ BAĞLANTILI-YÜKSEK BASINÇ ÖN DOLUM VALFLERİ

Cinsi	Ölçü	Norm	Max. Basınç bar	Fiyat USD.-
SVF-32-21C	2"	DN32	400	
SVF-50-21C	3"	DN50	400	
SVF-63-21C	3-1/2"	DN63	400	
SVF-80-21C	4"	DN80	400	
SVF-100-21C	5"	DN100	400	
SVF-125-21C	6"	DN125	400	
SVF-160-21C	8"	DN160	250	
SVF-200-21C	10"	DN200	250	
SVF-250-21C	16"	DN250	400	



DİREKT SİLİNDİR BAĞ. (KELEPÇELİ FLANŞ BAĞLANTILI) ÖN DOLUM VALFLERİ

Cinsi	Ölçü (") Max Flow (Lt/min.)	Norm	Max.Basınç bar	Fiyat USD.-
PF-50-FT-20	2" (200lt/min)	DN50	250	
PF-80-FT-20	3" (400lt/min)	DN80	250	
PF-90-FT-20	3-1/2" (630lt/min)	DN90	250	
PF-100-FT-20	4" (1000lt/min)	DN100	250	
PF-125-FT-20	5" (1600lt/min)	DN125	250	
PF-150-FT-20	6" (2500lt/min)	DN150	250	



DARBE EMİCİLER (SHOCK ABSORBERS) SABİT TİP

Cinsi	Max.Kütle Kg	Absorbe Özelliği Nm	Max. Darbe Hızı Mt/sn	Fiyat USD.-
SC-0806-2	0,5~6	2	0,5-2,0	
SC-1008-2	2~9	4	0,8-3,0	
SC-1210-2	5~30	5	0,8-3,0	
SC-1412-2	8~10	15	0,8-3,0	
SC-1415-2	10~150	20	0,8-3,0	
SC-1416-2	10~150	20	0,8-3,0	
SC-2020-2	30~700	40	1,0-3,5	
SC-2050-2	600~1200	60	1,0-3,5	
SC-2525-2	200~1500	80	1,0-4,0	
SC-3660-2	400~2400	250	1,0-4,0	



DARBE EMİCİLER (SHOCK ABSORBERS) AYARLANABİLİR TİP

Cinsi	Max.Kütle Kg	Absorbe Özelliği Nm	Max. Darbe Hızı Mt/sn	Fiyat USD.-
SD-1410	80	20	3	
SD-2016	200	25	3,5	
SD-2525	400	85	3,5	
SD-2540	700	100	3,35	
SD-3650	1400	300	3	
SD-4250	4000	500	4,5	

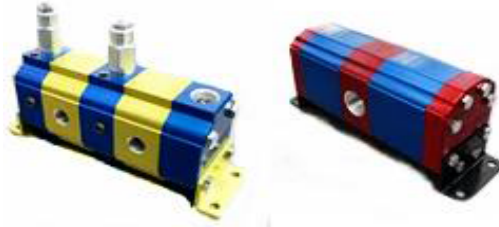




AKIŞ BÖLÜCÜLER (Flow Dividers)

Cinsi	Geo.Disp. cc/rev.	Ref.Flow (lpm)		Max. Pres. bar (psi)	Speed rpm		Port	Port	Fiyat USD.-
		Min	Max		Loaded	Unloaded	Out	In	

DFM-302A-6*	6	4,2	18	210 bar	1800	3000	PT 3/4"	PT 1/2"	
DFM-302A-8*	8,4	5,6	24						
DFM-302A-11*	11	6,6	33						
DFM-302A-13*	13	7,8	39						
DFM-302A-14*	14,3	8,4	42						
DFM-302A-17*	16,5	10,2	51						
DFM-302A-19*	19,2	11,4	38	3000 psi	1000	2000	PT 1"	PT 3/4"	
DFM-302A-23*	23	13,8	46						
DFM-302A-25*	25	15	50						
DFM-302A-28*	28	16,8	54						
DFM-302A-30*	30	18	60						



	Ölçü A (mm)	B (mm)
DMF-302A-6*	52	239
DMF-302A-8*	55	245
DMF-302A-11*	60	255
DMF-302A-13*	64	263
DMF-302A-14*	66	267
DMF-302A-17*	70	275
DMF-302A-19*	74	283
DMF-302A-23*	81	297
DMF-302A-25*	84	303
DMF-302A-28*	88	311
DMF-302A-30*	92	319

