



HAVA HAZIRLAYICI ÜNİTELER (ŞARTLANDIRICILAR)

Model	AFC 2000	AFR 2000	AF 2000	AL 2000	AR 2000	BFC 4000	BFR 4000	BF 4000	BL 4000	BR 4000
Operating Fluid	Air									
Joint Pipe Bore	1/4"					1/2"				
Filter Precision	40 micron									
Range of Adj. pressure	0,005 - 0,85 MPa				0,05 - 0,85 MPa			0,05 - 0,85 MPa		
Max. Adj. Pressure	0,95 MPa					0,95 MPa		0,95 MPa		
Ensured Press. Resist.	1,5 MPa									
Operating Temp. Range	5 - 60 °C									
Capacity of Filter Cup	15 cc.				60 cc.					
Capacity of Oil Feed Cup	25 cc.				25 cc.	90 cc.			90 cc.	
Weight	0,5 kg.	0,26 kg.	0,14 kg.	0,17 kg.	0,20 kg.	0,7 Kg.	0,4 kg.	0,33 kg.	0,25 kg.	0,23 kg.

Fiyat USD.-										
-------------	--	--	--	--	--	--	--	--	--	--



HOW TO ORDER

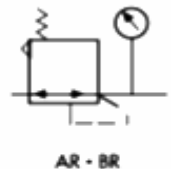
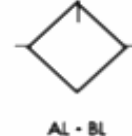
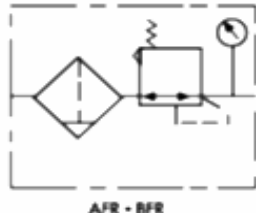
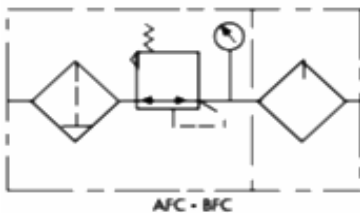
**BFC**      **4000**  
 ↓            ↓  
**AFC** : Model      **1500** : G1/8"  
**BFC** : Model      **2000** : G1/4"  
                            **3000** : G3/8"  
                            **4000** : G1/2"

HOW TO ORDER

**AF**      **2000**  
 ↓            ↓  
**AF** : Filter      **1500** : G1/8"  
**AR** : Regulator      **2000** : G1/4"  
**AFR** : Filter+Regulator  
**AL** : Lubricator

HOW TO ORDER

**BF**      **4000**  
 ↓            ↓  
**BF** : Filter      **3000** : G3/8"  
**BR** : Regulator      **4000** : G1/2"  
**BFR** : Filter+Regulator  
**BL** : Lubricator

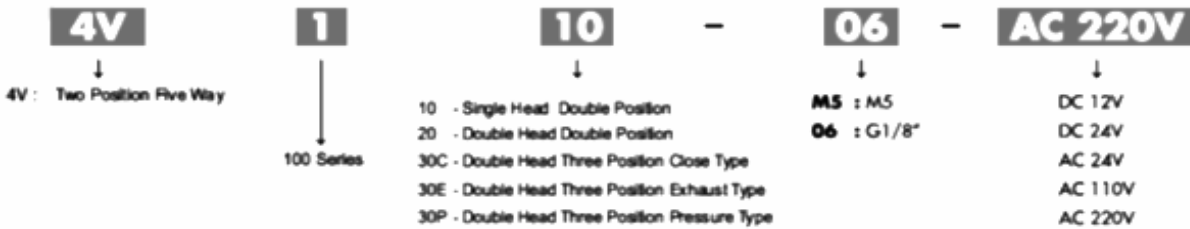




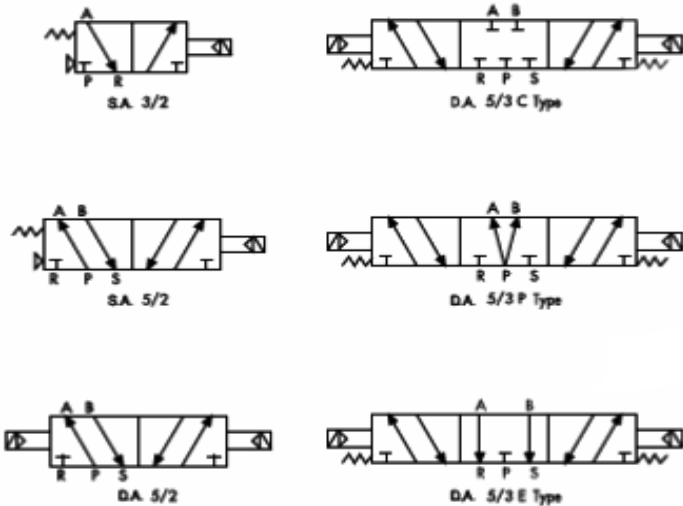


Model	4V110-06 (1/8 TB)	4V120-06 (1/8 CB)	4V130C-06 4V130E-06 4V130P-06
Effective Section Area	12mm. (CV=0.67)		9mm. (CV=0.5)
Joint Pipe Bore	G 1/8		
Working Medium	40 Micron Filtered Air		
Working Pressure	0.15-0.8 MPa		
Max.Pressure Resistance	1.2 MPa		
Operaing Temperature	5 - 50		
Voltaje Range	10%		
Power Consumption	AC:2.5VA DC:2.5W		
Hidhest Action Frequency	5 Cycle/Sec		
Shortest Excitation Time	0.05/0.05 Second		
Fiyat USD.-			

### HOW TO ORDER



### GRAPHIC SYMBOL



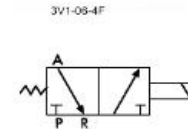




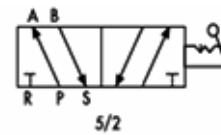
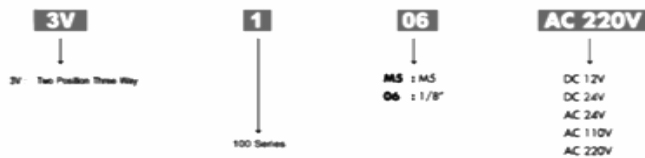




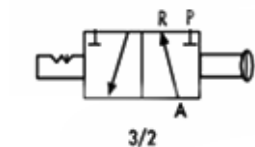
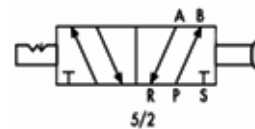
Model	3V1-M5	3V1-06
Motion Pattern	Direct Drive Type	
Joint Pipe Bore	M5	1/8
Working Medium	40 Micron Filtered Air	
Working Pressure	0 -0.8 MPa	
Max.Pressure Resistance	1.2 MPa	
Operaing Temperature	5 - 60	
Voltaje Range	10%	
Power Consumption	AC:5.5VA DC:4.8W	
Hidhest Action Frequency	10 Cycle/Sec	
Shortest Excitation Time	0.05 Second	
Material of Body	Aluminyum Alloy	
Air Outlet Diameter	1.0 mm.	
<b>Fiyat USD.-</b>		



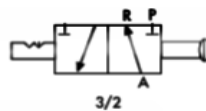
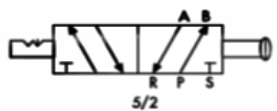
HOW TO ORDER



Model	3L210-08	4L210-08
Position Number	Two positon -Three way	Two positon - Five way
Effective Sectional Area	16 mm (CV=0,89)	
Working Medium	40 Micron Filtered Air	
Working Pressure Range	0-0.8 MPa	
Operaing Temperature Range	0-60	
<b>Fiyat USD.-</b>		



HOW TO ORDER



Model	4H210-06	4H210-08	4H230-08
Position Number	Two positon Five Way		There Position Five Way
Effect.Sect.Area	14mm. (CV=0,78)	16mm. (CV=0,89)	12mm. (CV=0,67)
Working Medium	40 micron		
Working Pressure	0-0,8 Mpa		
Operaing Temp.	0-60C		

<b>Fiyat USD.-</b>			
Model	4H310-08	4H310-10	4H410-15
Position Number			4H430-15
Effect.Sect.Area	Two Position Five Way		
Working Medium	25mm. (CV=1,4)	30mm.(CV=1,68)	50mm. (CV=2,7)
Working Pressure	0-0,8 Mpa		
Operaing Temp.	0-60C		
<b>Fiyat USD.-</b>			







MEKANIK BUTTON VALFLER

Model	MSV86321	MS86522	MSV98322
Position No	Three way two position	Five way two position	Three way two position
Effective Section Area	12mm. (CV=0,67)	16mm. (CV=0,89)	
Working Medium	40 micron		
Working Pressure	0-0,8 MPa		
Operaing Temperature Range	0- 60'C		
Fiyat USD.-			

HOW TO ORDER

**MSV**  
↓  
Mechanical Valve

**86**  
↓  
86 : Series  
98 : Series

**32**  
↓  
32 : Three way two position  
52 : Five way two position

**1**  
↓  
1 : G1/8"  
2 : G1/4"

**R**  
↓  
R : Roller  
TB : Selective Knob  
LB : Strengthened Knob  
PB : Large Round Button  
PP : Plat Round Button  
PPL : Convex Round Button  
EB : With Lock Button



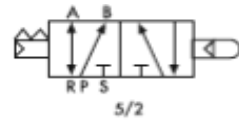
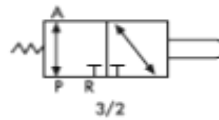
MSV 86321R



MSV 86321PP



MSV 86321EB





MANIFOLD'LAR



HOW TO ORDER

**100M**

**DF**

100 Mt: For 100 series Use  
 200 Mt: For 200 series Use  
 300 Mt: For 300 series Use  
 400 Mt: For 400 series Use

100 M:4F  
 5F

100M2F : 9 USD	3200M2F : 9 USD
100M3F : 11 USD	3200M3F : 11 USD
100M4F : 13 USD	3200M4F : 13 USD
100M5F : 15 USD	3200M5F : 15 USD
100M6F : 17 USD	3200M6F : 17 USD
100M7F : 20 USD	3200M7F : 20 USD
100M8F : 23 USD	3200M8F : 23 USD
100M9F : 27 USD	3200M9F : 27 USD
100M10F : 30 USD	3200M10F : 30 USD

200M2F : 9 USD
200M3F : 11 USD
200M4F : 13 USD
200M5F : 15 USD
200M6F : 17 USD
200M7F : 20 USD
200M8F : 23 USD
200M9F : 27 USD
200M10F : 30 USD

FLOW CONTROL VALFLER

Model	ASC-06 (G1/8)	ASC-08 (G1/4)	ASC-10 (G3/8)	ASC-15 (G1/2)	ST-01	ST-02
Effective Section Area					7,5mm.	21mm.
Working Pressure Range	0-0,95 MPa				0-1,0 MPa	
Working Temp. Range	0-60°C				0-60°C	
Fiyat USD.-						



SHUTTLE VALFLER



ST-01

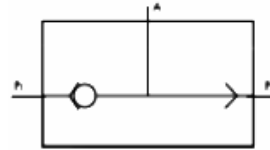
HOW TO ORDER

**ST**

**01**

Model

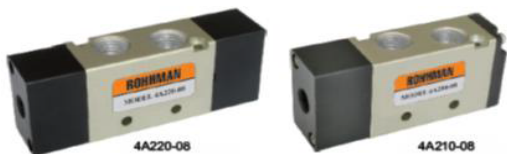
01 : G1/8"  
 02 : G1/4"



Model	4A110-06	4A120-06	4A130C-06	4A210-06	4A220-06	4A230C-06	4A210-08	4A1220-08	4A230C-08
			4A130E-06			4A230E-06			4A230E-08
			4A130P-06			4A230P-06			4A230P-08

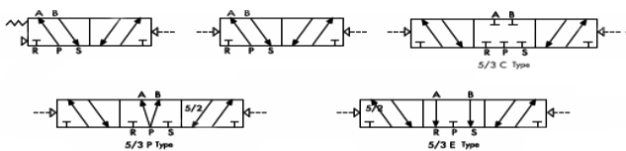
Position Number	2 pos.5 way	3 pos.5 way	2 pos.5 way	3 pos.5 way	3 pos.5 way	3 pos.5 way
Effective Section A.	12mm. (CV=0,67)	9mm. (CV=0,5)	14mm.(CV=0,78)	12mm.(CV=0,67)	16mm.(CV=0,89)	12mm.(CV=0,67)
Joint Pipe Bore	G 1/8		G 1/8		Air inlet, outlet:1/4 Exhaust:1/8	
Working Medium	40 Micron					
Work.Pressure Ran.	0.15-0.8 MPa					
Max.Pressure Resist.	1.2 MPa					
Work.Temperature R.	5 - 50 °C					
Highest Action Freq.	5 Cycle/sec.					
Shortest Excitation T.	0.05 Second					

Fiyat USD.-									
-------------	--	--	--	--	--	--	--	--	--



4A220-08

4A210-08



HOW TO ORDER

**4A**

**2**

**10**

**08**

4A Five way 2(3) Position  
 3A Three way two position

1 100 Series  
 2 200 Series

10 : Single Head Double Position  
 20 : Double Head Double Position  
 30C : Double Head Three Position Close Type  
 30E : Double Head Three Position Exhaust Type  
 30P : Double Head Three Position Pressure Type

M5 : M5  
 06 : 1/8"  
 08 : 1/4"

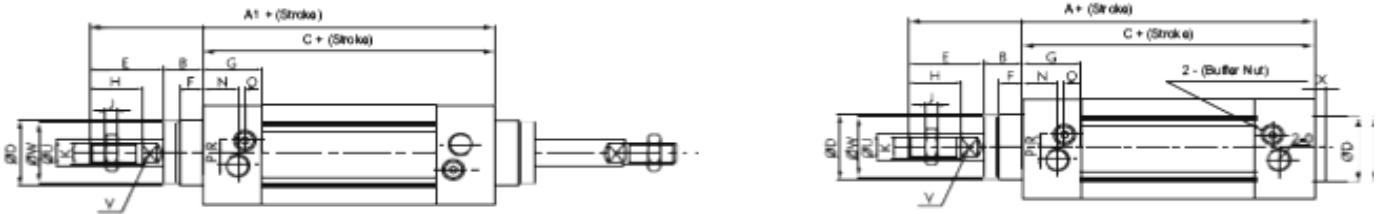


PNÖMATİK SİLİNDİRLER (ISO6431 VDMA24562)

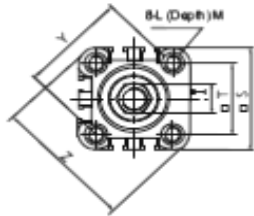
Bore	32	40	50	63	80	100	125
------	----	----	----	----	----	-----	-----

Fluid	Air						
Working Voltage Range	1-9,0 kgf/cm						
Mak.Pressure Resistance	13,5 kgf/cm						
Working Temperature Range	0-70°C						
Working Speed Range	50-800 mm/sec						
Connection measure	G 1/8"	G 1/4"	G 1/4"	G 3/8"	G 3/8"	G 1/2"	G 1/2"

Fiyat USD.-							
-------------	--	--	--	--	--	--	--



HOW TO ORDER



- RIC**   **D**   **50x50** - **S** - **FB**
- RIC: Aluminium Body  
RICD Double Rod
- D: Double Shaft Double Action
- 50x50: Cylinder Bore  
Stroke
- S: Magnet
- LB: Front and back fixed type  
FA: Front cover fixed type (Front Flange Type)  
FB: Back cover fixed type (Rear Flange Type)  
CA: Back cover fixed type (Single Earring)  
CB: Back cover fixed type (Double Earring)  
RC: Rod Clevis

RICD



Bore (mm)	A	A1	A2	B	C	D	E	F	G	H	I	J	K	L
32	142	190	185	16	94	30	32	10	25	22	17	6	M10 X 1.25	M6
40	159	213	207	20	105	35	34	10	29.5	24	17	7	M12 X 1.25	M6
50	175	244	233	27	106	40	42	10	32	32	23	8	M16 X 1.5	M8
63	190	258	247	26	122	45	42	10	36	32	23	8	M16 X 1.5	M8
80	214	301	288	35	127	45	52	10	37	40	26	10	M20 X 1.5	M10
100	229	321	308	40	137	55	52	10	39	40	26	10	M20 X 1.5	M10

Bore (mm)	M	N	O	P	Q	R	S	T	U	V	W	X	Y	Z	Z1
32	12	15	G1/8	5	3	6.5	45	32.5	12	10	28	4	46	58.7	21
40	12	17.5	G1/4	7	3	7	52	38	16	13	33	4	53.7	68	21
50	12	21	G1/4	7	3	9	65	46.5	20	17	38	4	65.8	84.5	23
63	12	23	G3/8	8	5	9	76	56.5	20	17	40	4	79.9	99.6	23
80	15	24	G3/8	10	5	12	94	72	25	22	43	5	101.8	123.8	29
100	15	26	G1/2	10	5	14	112	89	25	22	47	6	125.9	148.9	29



TANDEM SİLİNDİRLER (ISO6431 VDMA24562)

Bore	32	40	50	63	80	100	125
------	----	----	----	----	----	-----	-----

Fluid	Air						
Working Voltage Range	1-9,0 kgf/cm						
Mak.Pressure Resistance	13,5 kgf/cm						
Working Temperature R.	0-70'C						
Working Speed Range	50-800 mm/sec						
Connection measure	G 1/8"	G 1/4"	G 1/4"	G 3/8"	G 3/8"	G 1/2"	G 1/2"

Fiyat USD.-							
-------------	--	--	--	--	--	--	--

Bore (mm)	A	B	C	D	E	F	G	H	I	J	K	L
32	209	16	42	30	32	10	25	22	17	6	M10x1.25	M6
40	234.5	20	46	35	34	10	29.5	24	17	7	M12x1.25	M6
50	253	27	46	40	42	10	32	32	23	8	M16x1.5	M8
63	276	26	50	45	42	10	36	32	23	8	M16x1.5	M8
80	307	35	56	45	52	10	37	40	26	10	M20x1.5	M10
100	328	40	68	55	52	10	39	40	26	10	M20x1.5	M10
125	389	45	79.5	60	74	12	45	54	40	12.5	M27x2	M12

Bore (mm)	M	N	O	P	Q	R	S	T	U	V	W	X	Y	Z	N1
32	12	15	G1/8	5	3	6.5	45	32.5	12	10	28	4	46	58.7	12.5
40	12	17.5	G1/4	7	3	7	52	38	18	13	33	4	53.7	68	14.75
50	12	21	G1/4	7	3	9	65	46.5	20	17	38	4	65.8	84.5	16
63	12	23	G3/8	8	5	9	76	56.5	20	17	40	4	79.9	99.6	18
80	15	24	G3/8	10	5	12	94	72	25	22	43	5	101.8	123.8	18.5
100	15	26	G1/2	10	5	14	112	89	25	22	47	6	125.9	148.9	19.5
125	20	31	G1/2	10.5	5	15	134	110	32	27	53.5	5	155	178	22.5

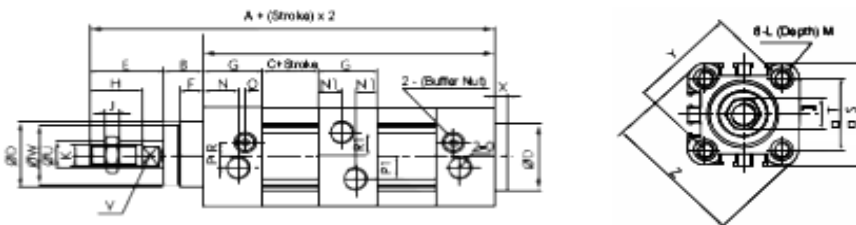
HOW TO ORDER

**RTIC**   **D**   **50x50** - **S** - **FB**

RTIC :Aluminium Body      Cylinder Bore      Stroke      Magnet

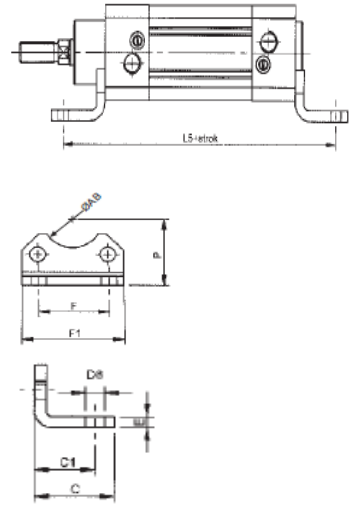
D :Double Shaft Double Action

LB : Front and back fixed type  
 FA : Front cover fixed type (Front Flange Type)  
 FB : Back cover fixed type (Rear Flange Type)  
 CA : Back cover fixed type (Single Earring)  
 CB : Back cover fixed type (Double Earring)  
 RC : Rod Clevis



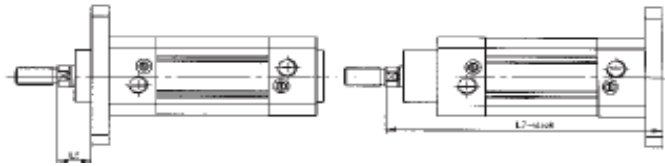
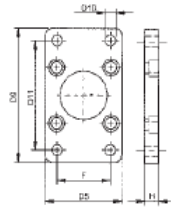


**TYPE LB:**  
**FOOT MOUNTING**



Symbol/Bore	32	40	50	63	80	100
P	32	36	45	50	63	71
AB(min)	30	35	40	45	45	55
F	32	36	45	50	63	75
F1	45.5	54,5	65	76	94	112
D8(Q)	7	10	10	10	12	14
E	5	5	6	6	6	6
C1	24	28	31	32	41	41
C	30	37	41	44	56	58
L5	142	161	170	185	210	220
<b>Fiyat USD.-</b>						

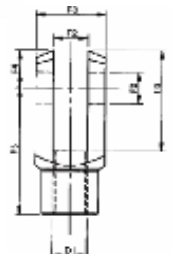
**TYPE FA-FB:**  
**FLANGE MOUNTING**



Symbol/Bore	32	40	50	63	80	100
D5	45	54	65	76	94	112
D9	80	90	110	120	150	175
D11	64	72	90	100	126	150
D10	7	9	9	9	12	14
F	32	36	45	50	63	75
H	10	10	12	12	16	16
L6	16	20	25	25	30	35
L7	130	145	155	170	190	205
<b>Fiyat USD.-</b>						

**TYPE RC: ROD CLEVIS**

Symbol/Bore	32	40	50	63	80	100
D1	M10*1.25	M12*1,25	M16*1.5	M16*1.5	M20*1.5	M20*1.5
F2 Q	10	12	16	16	20	20
F3	20	24	32	32	40	40
F4	12	14	19	19	25	25
F5	40	48	64	64	80	80
F6	32	38	51	51	65	65
<b>Fiyat USD.-</b>						

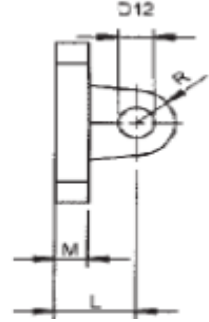
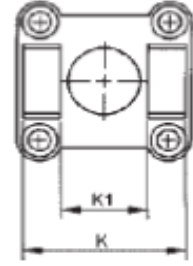




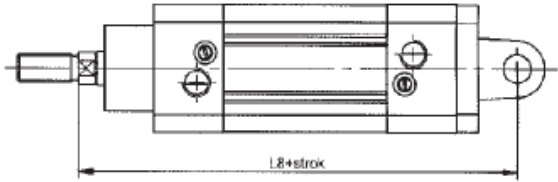
**TYPE CA:  
SWIVEL FLANGE**

**SİLİNDİR AKSESUARLARI**

Symbol/Bore	32	40	50	63	80	100
D12Q	10	12	12	16	16	20
K	45	52	60	70	90	110
K1	26	28	32	40	50	60
L	22	25	27	32	36	41
L8	142	160	170	190	210	230
M	9	9	11	11	14	14
R	10	12	13	16	16	20
<b>Fiyat USD.-</b>						

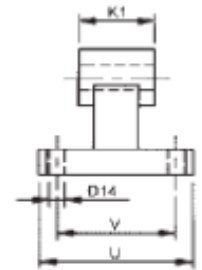
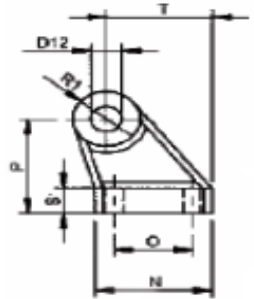


Symbol / Bore	32	40	50	63	80	100
D12 Ø	10	12	12	16	16	20
K	45	52	60	70	90	110
K1	26	28	32	40	50	60
L	22	25	27	32	36	41
L8	142	160	170	190	210	230
M	9	9	11	11	14	14
R	10	12	13	16	16	20



**TYPE CB:  
SWIVEL FLANGE WITH FOOT MOUNTING**

Symbol/Bore	32	40	50	63	80	100
D12Q	10	12	12	16	16	20
D14Q	5.5	5.5	6.5	6.5	9	9
K1	26	28	32	40	50	60
N	31	35	45	50	60	70
O	18	22	30	35	40	50
P	32	36	45	50	63	71
R1	10	11	13	15	15	19
S	8	10	12	12	14	15
T	27.5	30.5	40.5	44.5	57	65
U	51	54	65	67	86	96
V	38	41	50	52	66	76
<b>Fiyat USD.-</b>						



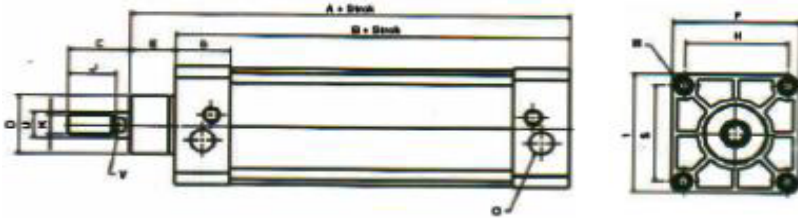
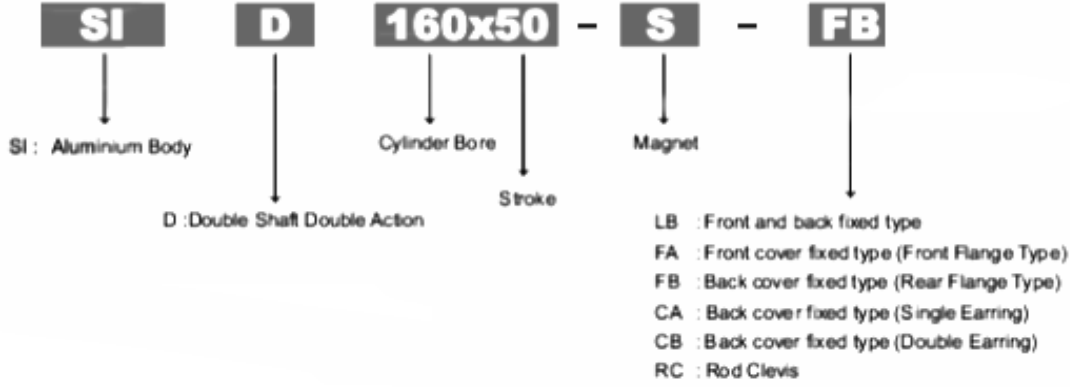
Symbol / Bore	32	40	50	63	80	100
D12 Ø	10	12	12	16	16	20
D14 Ø	5.5	5.5	6.5	6.5	9	9
K1	26	28	32	40	50	60
N	31	35	45	50	60	70
O	18	22	30	35	40	50
P	32	36	45	50	63	71
R1	10	11	13	15	15	19
S	8	10	12	12	14	15
T	27.5	30.5	40.5	44.5	57	65
U	51	54	65	67	86	96
V	38	41	50	52	66	76



Bore (mm)	A	B	C	D	E	F	G	H	I	J	K	M	O	S	U	V
160	242	184	94	65	58	180	52	140	179	72	M36*2	M16	G1/2	140	40	36
Fiyat USD.-																

Fiyatlar 50mm.stroklara göre yazılmıştır....Farklı stroklar için fiyat sorunuz...

### HOW TO ORDER



#### TANDEM SİLİNDİR

Daha fazla kuvvet ihtiyacınız olan alanlarda bu tip silindirler kullanılmaktadır. 160 mm çap silindirler içinde istenilen stoklarda üretim yapmaktayız.



#### İKİZ SİLİNDİR

Bu tip silindirler aynı çapta iki borudan oluştuğundan dolayı daha fazla kuvvet ve dönmez milli silindirler olarak kullanılır.



#### HİDRO PNÖMATİK SİLİNDİR

Hidro Pnömatik Silindirler özellikle Lineer hareket elde etmek ve hassas konumlama yapabilmek amacıyla kullanılırlar. Normal bir pistonu olduğu gibi titreşim yapmazlar ve düzgün bir ilerleme sağlarlar. İstenilen strok ve çaplarda üretim yapabilmekteyiz.



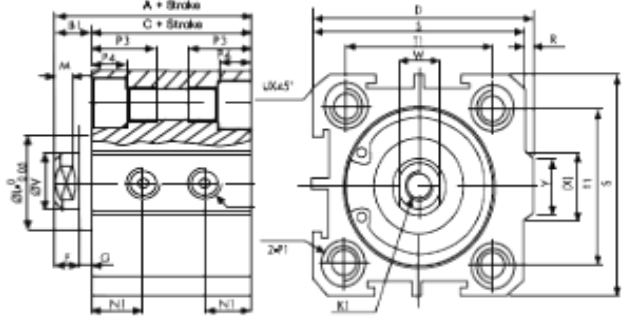
#### SHORT STROK TANDEM SİLİNDİR

Bu tip silindirlerde yine diğer tandem silindirler gibi daha fazla kuvvet istenilen alanlarda kullanılır. Ekstra avantajı daha kısa boyutlarda olmasıdır. 100 mm çapa kadar istenilen stroklarda üretebilmekteyiz.



## SHORT STROKE SİLİNDİRLER

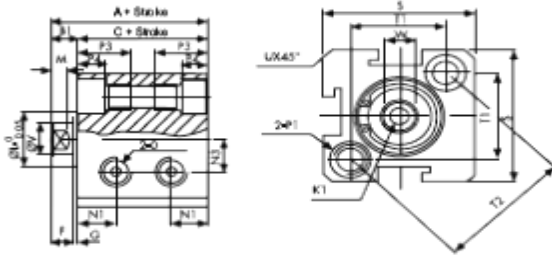
	Fiyat USD.-
Q12mm	
Q16mm	
Q20mm	
Q25mm	
Q32mm	
Q40mm	
Q50mm	
Q63mm	
Q80mm	
Q100mm	



Fiyatlar 10mm stroklara göre yazılmıştır.Farklı stroklar için lütfen fiyat alınız....



Type Bore	Standard Type			Attach Magnet			D	E	F	G	K1	L	M	N1	N3	O
	A	B1	C	A	B1	C										
12	22	5	17	32	5	27	-	6	4	1	M3 x 0.5	10.2	2.8	6.3	6	M5 x 0.8
16	24	5.5	18.5	34	5.5	28.5	-	6	4	1.5	M3 x 0.5	11	2.8	7.3	6.5	M5 x 0.8
20	25	5.5	19.5	35	5.5	29.5	36	8	4	1.5	M4 x 0.7	16	2.8	7.5	-	M5 x 0.8
25	27	6	21	37	6	34	42	10	4	2	M5 x 0.8	17	2.8	8	-	M5 x 0.8
32	31.5	7	24.5	41.5	7	34.5	50	12	4	3	M6 x 1	22	2.8	9	-	G1/8
40	33	7	26	43	7	36	58.5	12	4	3	M8 x 1.25	28	2.8	10	-	G1/8
50	37	9	28	47	9	38	71.5	15	5	4	M10 x 1.5	38	2.8	10.5	-	G1/4
63	41	9	32	51	9	42	84.5	15	5	4	M10 x 1.5	40	2.8	11.8	-	G1/4
80	52	11	41	62	11	51	104	15	6	5	M14 x 1.5	45	4	14.5	-	G3/8
100	63	12	51	73	12	61	124	18	7	5	M18 x 1.5	55	4	20.5	-	G3/8



## HOW TO ORDER

**SDA** - **20** X **30** **S**  
 ↓ ↓ ↓ ↓  
 SDA Double Action Bore (mm) Stroke (mm) Magnet  
 SSA Single Action

Bore	P1	P3	P4	R	S	T1	T2	U	V	W	X	Y
12	Ø 6.5 M5 x 0.8 Ø 4.2	12	4.5	-	25	16.2	23	1.6	6	5	-	-
16	Ø 6.5 M5 x 0.8 Ø 4.2	12	4.5	-	29	19.8	28	1.6	6	5	-	-
20	Ø 6.5 M5 x 0.8 Ø 4.2	14	4.5	2	34	24	-	2.1	8	6	11.3	10
25	Ø 8.2 M6 x 1.0 Ø 4.6	15	5.5	2	40	28	-	3.1	10	8	12	10
32	Ø 8.2 M6 x 1.0 Ø 4.6	16	5.5	6	44	34	-	2.15	12	10	18.3	15
40	Ø 10 M8 x 1.25 Ø 6.5	20	7.5	6.5	52	40	-	2.25	16	14	21.3	16
50	Ø 11 M8 x 1.25 Ø 6.5	25	8.5	9.5	62	48	-	4.15	20	17	30	20
63	Ø 11 M8 x 1.25 Ø 6.5	25	8.5	9.5	75	60	-	3.15	20	17	28.7	20
80	Ø 14 M12 x 1.75 Ø 9.2	25	10.5	10	94	74	-	3.65	25	22	36	26
100	Ø 17.5 M12 x 1.75 Ø 11.3	30	13	10	114	90	-	3.65	32	27	35	26





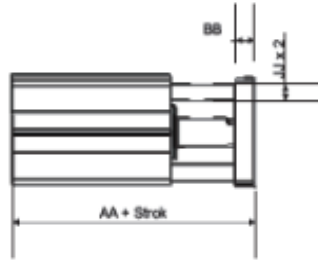
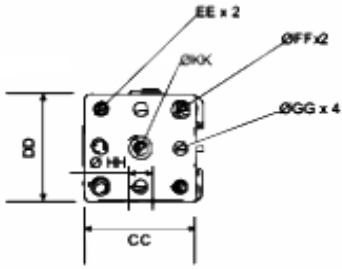
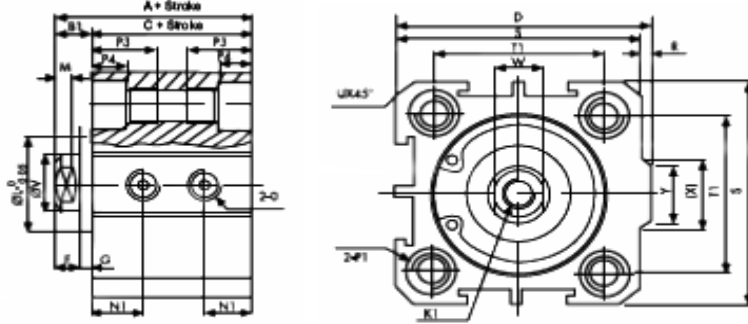
## KISA STROKLU YATAKLI SİLİNDİRLER

Fiyat USD.-

	Fiyat USD.-
Q20mm	
Q25mm	
Q32mm	
Q40mm	
Q50mm	
Q63mm	



\*Fiyatlar 10mm stroklara göre yazılmıştır.Farklı stroklar için lütfen fiyat alınır.



### HOW TO ORDER

**RCJ** — **20** X **30** **S**  
 ↓ Bore (mm)      ↓ Stroke (mm)      ↓ Magnet  
 RCJ Double Action  
 SSA Single Action

Bore	A	B1	C	D	E	F	G	K1	L	M	N1	N3	O
20	25	5.5	19.5	36	8	4	1.5	M4 x 0.7	16	2.8	7.5	-	M5 x 0.8
25	27	6	21	42	10	4	2	M5 x 0.8	17	2.8	8	-	M5 x 0.8
32	31.5	7	24.5	50	12	4	3	M6 x 1	22	2.8	9	-	G1/8
40	33	7	26	58.5	12	4	3	M8 x 1.25	28	2.8	10	-	G1/8
50	37	9	28	71.5	15	5	4	M10 x 1.5	38	2.8	10.5	-	G1/4
63	41	9	32	84.5	15	5	4	M10 x 1.5	40	2.8	11.8	-	G1/4

Bore	P1	P3	P4	R	S	T1	T2	U	V	W	X	Y		
20	Ø 6.5	M5 x 0.8	Ø 4.2	14	4.5	2	34	24	-	2.1	8	6	11.3	10
25	Ø 8.2	M6 x 1.0	Ø 4.6	15	5.5	2	40	28	-	3.1	10	8	12	10
32	Ø 8.2	M6 x 1.0	Ø 4.6	16	5.5	6	44	34	-	2.15	12	10	18.3	15
40	Ø 10	M8 x 1.25	Ø 6.5	20	7.5	6.5	52	40	-	2.25	16	14	21.3	16
50	Ø 11	M8 x 1.25	Ø 6.5	25	8.5	9.5	62	48	-	4.15	20	17	30	20
63	Ø 11	M8 x 1.25	Ø 6.5	25	8.5	9.5	75	60	-	3.15	20	17	28.7	20

Bore	AA	BB	CC	DD	EE	FF	GG	HH	JJ	KK
20	43	8	34	34	Ø5	Ø6	M5	Ø8	Ø4	Ø5
25	47	10	40	40	Ø5	Ø6	M5	Ø8	Ø6	Ø6
32	51.5	10	44	44	Ø5	Ø6	M5	Ø10	Ø6	Ø7
40	53	10	52	52	Ø5	Ø6	M5	Ø12	Ø8	Ø8.5
50	59	12	62	62	Ø6.5	Ø8	M6	Ø15	Ø8	Ø10.5
63	63	12	75	75	Ø6.5	Ø8	M6	Ø15	Ø8	Ø10.5



**MİNİ SİLİNDİRLER**

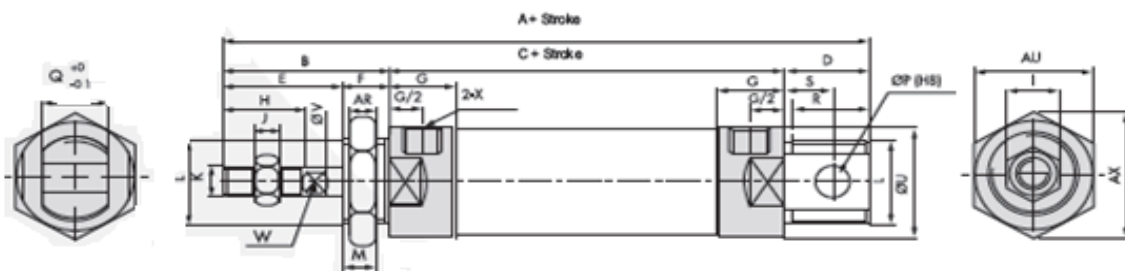
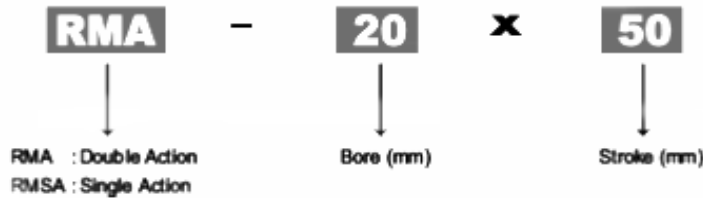


Bore	10	12	16	20	25
Fluid	Air				
Working Voltage Range	1-9,0 kgf/cm				
Mak.Pressure Resistance	13,5 kgf/cm				
Working Temperature Range	0-70°C				
Working Speed Range	50-800 mm/sec				
Joint Pipe Bore	M5*0,8			G 1/8"	
<b>Fiyat USD.-</b>					

Bore	A	B	C	D	E	F	G	H	I	J	K	L
10	86	29	47	11	18	11	8.5	12	7	3	M4 x 0.7	M12 x 1.25
12	105	37	51	16	21	16	8.5	16	10	4	M6 x 1.0	M16 x 1.5
16	114	38	60	15	22	16	10	16	10	5	M6 x 1.0	M16 x 1.5
20	137	40	76	21	28	12	16	20	12	6	M8 x 1.25	M22 x 1.5
25	141	44	76	21	30	14	16	22	17	6	M10 x 1.25	M22 x 1.5

Bore	M	P	Q	R	S	U	V	W	X	AR	AU	AX
10	9	4	8	11	10	15	4	3	M5	7	19	21
12	14	6	12	16	15	20	6	5	M5	6	24	27
16	14	6	12	16	9	21	6	5	M5	6	24	27.5
20	10	8	16	19	12	27	8	6	G1/8	7	33	29
25	12	8	16	19	12	30	10	8	G1/8	7	33	29

**HOW TO ORDER**





### SLIDE VALF



Model	HSV-01	HSV-02	HSV-03	HSV-04	HSV-06
Joint Pipe Bore	1/8	1/4	3/8	1/2	3/4
Flow Bore	4mm	7mm	10mm	12mm	18mm
Working Medium	Filtered Air				
Working Pressure	0-1.0 MPa				
Operating Temperature	5-60°C				
Working Force	20N				30N
<b>Fiyat USD.-</b>					

### CHECK VALF

Model	CV-06	CV-08	CV-10	CV-15
Joint Pipe Bore	1/8	1/4	3/8	1/2
Flow (mm/S)	10	20	40	60
Leak Out Flow (cm/min)	45	60	80	95
Operation Medium	Filtered Air			
Working Temperature	5-60°C			
Working Pressure	0.05-1.2 MPa			
<b>Fiyat USD.-</b>				



### ÇABUK EGZOST VALFLERİ

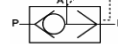
Model	XQ-02	XQ-03	XQ-04
Joint Threaded	G 1/4	G 3/8	G 1/2
Joint Pipe Bore	6mm	8mm	15mm
Flow	0.9m/min	2.5m/min	4.5m/min
Timerate (Ten Thousand Times)	200		
Working Pressure	0.12-1.0MPa		
Exchange Times (S)	0.03	0.04	0.05
<b>Fiyat USD.-</b>			



#### HOW TO ORDER

**XQ**

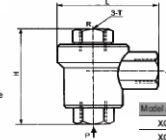
XQ Quick Exhaust Valve



**02**

Joint Pipe Bore

02 G1/4  
03 G3/8  
04 G1/2



Model / Symbol	T	H	L
XQ-02	G1/4	51	45
XQ-03	G3/8	68	62
XQ-04	G1/2	77	86

### GENEL MAKSAT VALFLERİ

Model	PU 220-01	PU 220-02	PU 220-03	PU 220-04	PU 220-06	PU 220-08
Working Medium	Air, Water, Oil					
Motion Pattern	Direct Drive Type					
Type	Normal Close Type					
Aperture of Flow Rate	1.5	2.3	8.0	13	20	25
Joint Pipe Bore	1/8	1/4	3/8	1/2	3/4	1
Operation Fluid Viscosity	50 CST					
Working Pressure	0-0.7 MPa					
Max. Working Pressure	1.5MPa					
Operation Temperature	-5-80°C					
Body	Brass					
<b>Fiyat USD.-</b>						

**PU** ↓ Specification Code  
PU : Two position two way

**220** ↓ Motion Pattern  
220 : Direct Drive Type

**02** ↓ Joint Pipe Bore  
10 : 3/8"  
15 : 1/2"  
20 : 3/4"  
25 : 1"  
35 : 1 1/4"  
40 : 1 1/2"  
50 : 2"

**AC110V** ↓ Standard Voltage  
DC : 12 V  
DC : 24 V  
AC : 220 V  
AC : 110 V  
AC : 380 V

**V** ↓ NBR  
E : EPDM  
V : VITON

